



Hartford Foundation  
FOR PUBLIC GIVING

2021  
ANNUAL REPORT  
to our community

**OUR WORK IN  
PROGRESS**





## 2021 ▸ AT A GLANCE

### TOTAL ASSETS

**\$ 1.25 billion**

### CONTRIBUTIONS

**\$ 24.5 million**

### FUNDS

**82 new funds**

1,464 TOTAL NAMED FUNDS

### INVESTMENT RETURNS

**12.1%** in the Corporate Portfolio  
and **14.7%** in the Trust Portfolio.

### GRANTS

**\$ 45.2 million**

\$894 MILLION SINCE 1925

### WHERE THE DOLLARS WERE SPENT

**GRANTS\*** \$45,156,873

**ADMINISTRATIVE**  
(operating costs) \$ 8,479,530

**RELATED PROGRAM**  
**ACTIVITIES** \$ 2,637,116

\*Does not include grants from agency endowments.

### THE HARTFORD FOUNDATION WAS

**founded in 1925**

### OUR MISSION:

We put philanthropy into action to create lasting solutions that result in vibrant communities within the Greater Hartford region.

### We proudly serve Greater Hartford:

- ▶ Andover
- ▶ Avon
- ▶ Bloomfield
- ▶ Bolton
- ▶ Canton
- ▶ East Granby
- ▶ East Hartford
- ▶ East Windsor
- ▶ Ellington
- ▶ Enfield
- ▶ Farmington
- ▶ Glastonbury
- ▶ Granby
- ▶ Hartford
- ▶ Hebron
- ▶ Manchester
- ▶ Marlborough
- ▶ Newington
- ▶ Rocky Hill
- ▶ Simsbury
- ▶ Somers
- ▶ South Windsor
- ▶ Suffield
- ▶ Tolland
- ▶ Vernon
- ▶ West Hartford
- ▶ Wethersfield
- ▶ Windsor
- ▶ Windsor Locks

## CONTENTS

**03**

Leadership Message

**04**

Strategic Overview

**06**

Our Commitment

**08**

What We Learned

**12**

Outcome Areas

**24**

How We Do Our Work

**28**

Action Fund

**30**

Giving Circles / Scholarship

**32**

Greater Together

**34**

Finances

**40**

New Funds

**58**

1925 Society

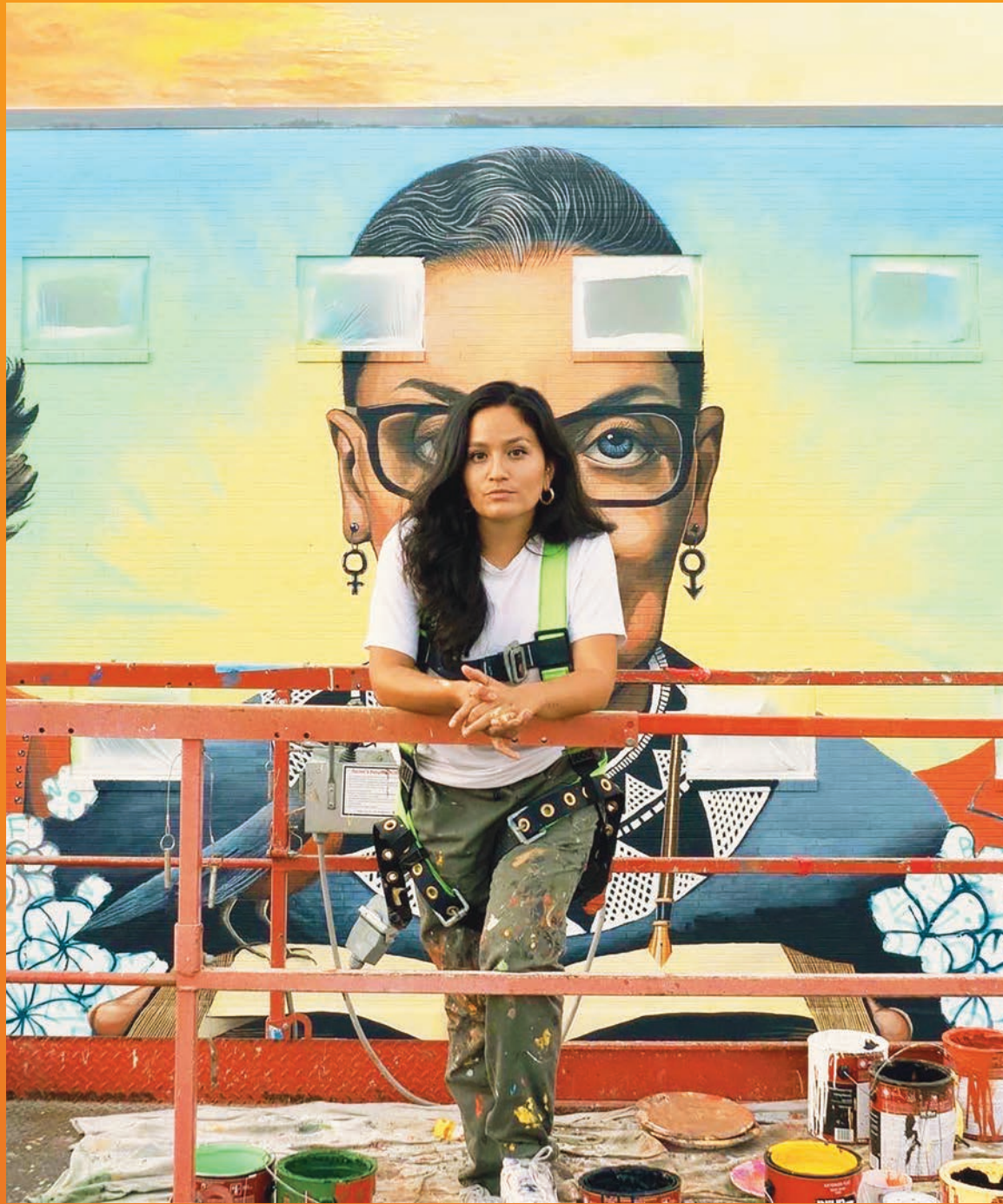
**60**

Funds List

**75**

Our Team

◀ The Black Lives Matter Mural on Trinity Street (cover), the street mosaic (above) and storefront mural (right) on Capitol Avenue were supported in part by Foundation grants.



“This was my first time creating a mural that was larger than life, my first time on a scissor lift, and my first time advocating for women in the public eye.”

MICAELA LEVESQUE | East Hartford Artist  
Justice Ruth Bader Ginsburg Women's Empowerment Mural | 330 Market Street - Hartford, Connecticut  
Funded in part by a Hartford Neighborhood Beautification grant to the Community Renewal Team

## COLLABORATION, COMMITMENT, AND COMMUNITY.

This is an unprecedented time, for the Hartford Foundation for Public Giving and our entire community. Many of the longstanding challenges exacerbated by the dual pandemics of COVID-19 and systemic racism lingered through 2021 and persist today. Amid these challenges, a myriad of opportunities lie ahead, and we are standing shoulder to shoulder with our community partners—nonprofits, donors, and other stakeholders—to seize upon them.

Over these two remarkable years, our work has progressed and is now defined by two strategic priorities: helping to dismantle structural racism and achieving equity in social and economic mobility for Black and Latinx residents. These are lofty goals that require collaboration, a steadfast commitment, and a long-term approach; they go straight to the heart of living our mission of **putting philanthropy into action to create lasting solutions that result in vibrant communities within the Greater Hartford region.**

As an organization, we too, are a “work in progress,” listening closely to residents, donors, and nonprofits that are more proximate to the issues we seek to address. In 2021, we renewed partnerships with many nonprofits and co-funders, but also forged new relationships with dozens of organizations embedded in neighborhoods across the region. We are also on our own DEI journey, learning from our past and fully committed to creating a more diverse, equitable, and inclusive Hartford Foundation, now and into the future.

As your community foundation, we are here for good, with a \$1.2 billion endowment, making on average \$42.8 million in grants (over the past five years) that touch the lives of hundreds of thousands of our region's residents. In the pages that follow, you will read about an array of investments that support our neighbors in each of five outcome areas: from housing and employment to raising resident voices, the arts and, as always, ensuring people have the basic necessities of life. You'll also learn about the generosity of our donors, who created more than 80 new funds in 2021. We hope these stories will inspire you to stay connected with the Hartford Foundation for years to come.



JAY WILLIAMS  
President and CEO

THEODORE S. SERGI  
Chair, Board of Directors



To create a vibrant region, we must take steps to **DISMANTLE STRUCTURAL RACISM.**

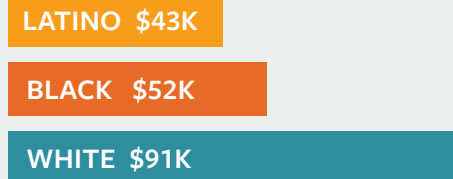
In Greater Hartford and across the country, Black and Latinx communities, as well as other communities of color, face persistent disparities which create barriers to health, wellbeing and wealth building.

These disparities didn't happen by accident. They are the result of decades of systemic factors and disinvestment in these communities, many of which are still woven into the fabric of our institutions.

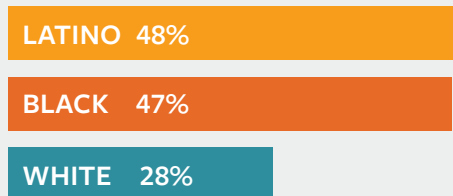


▶ SCAN FOR MORE ON OUR Strategic Overview and Commitment

**MEDIAN HOUSEHOLD INCOME** by Race/Ethnicity of head of household in Greater Hartford<sup>1</sup>



**HOUSING COST BURDEN RATE\***: Spending at least 30% of total income on housing in Greater Hartford<sup>1</sup>



In Hartford, there are an estimated



At least **70%** are youth of color.<sup>2</sup>

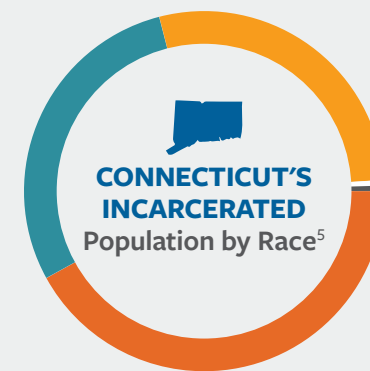
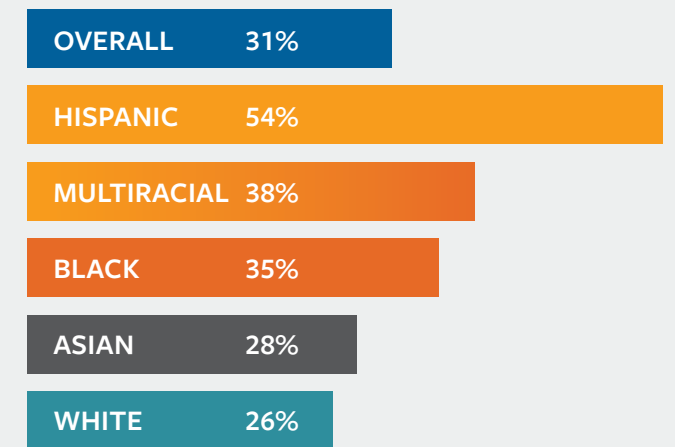
From 2017 to 2021, Black renters were more than 3x more likely and Hispanic/Latino renters were more than 2x more likely than white renters to have an **EVICTION** case filed against them.<sup>3</sup>



**CONNECTICUT'S HOMELESS POPULATION**<sup>4</sup>

- ▶ African Americans make up 38% of the homeless population but only 10% of the state's population.
- ▶ Hispanic/Latinx residents make up 27% of the homeless population but only 17% of the state's population.

**CONNECTICUT FOOD INSECURITY RATES**<sup>6</sup>



Black	42%
White	29%
Hispanic	28%
American Indian	<1%
Asian	<1%



**BIPOC artists had higher rates of unemployment (69% vs. 60%)** and lost a larger percentage of their creative income (61% vs. 56%) than white artists due to the pandemic.<sup>7</sup>

\* Combines Severely Cost-Burdened and Cost-Burdened

With support from CTData and DataHaven | <sup>1</sup> Hartford Foundation Equity Profile 2021, DataHaven | <sup>2</sup> The Charter Oak Group, LLC, 2022 | <sup>3</sup> CTData Collaborative: Exposing Connecticut's Eviction Crisis | <sup>4</sup> Connecticut Coalition to End Homelessness, 2021 | <sup>5</sup> Connecticut Dept. of Correction Monthly Statistics, April 2022 | <sup>6</sup> Connecticut Foodshare Institute for Hunger and Research Solutions, September 2021 | <sup>7</sup> Americans for the Arts, March 2022 | hfpg.org/ar2021sources

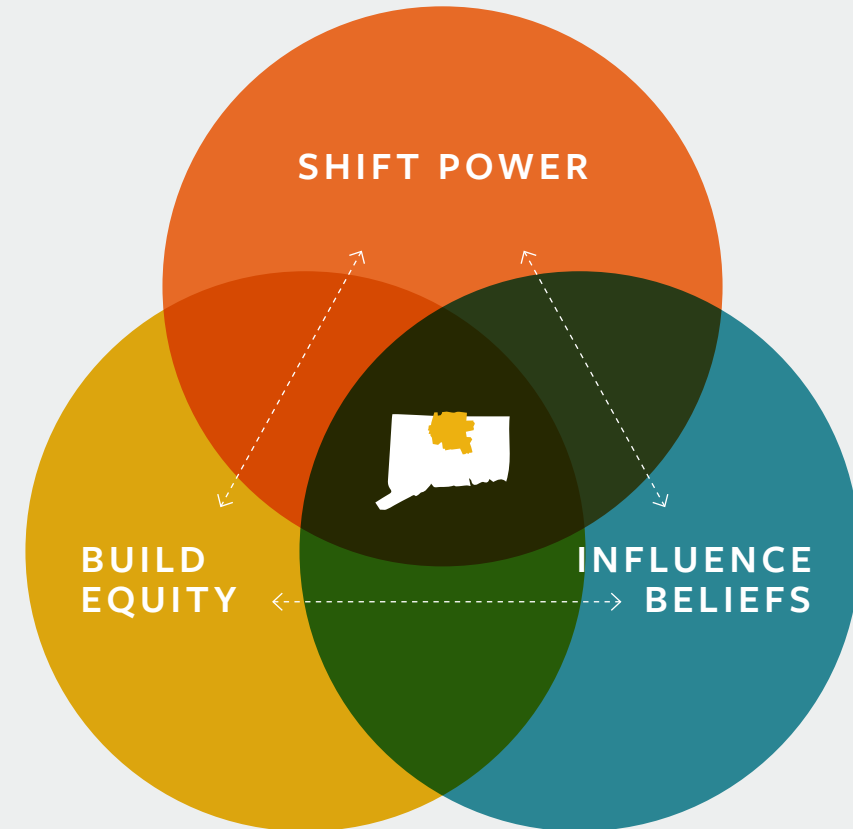


WE ARE CREATING A NEXUS WHERE everyone has equitable claim and everyone has equitable benefit.

An inclusive community is a healthy community. More inclusive communities offer diverse perspectives, creativity and innovation, greater economic potential, a stronger workforce, and improved wellbeing for all residents.

The Hartford Foundation strives to create a more equitable Greater Hartford, one where every resident's contributions are valued and all residents have access to an array of opportunities to succeed.

What does it mean to Dismantle Structural Racism?



**SHIFT POWER**  
Change the makeup of who benefits from opportunity and who makes decisions about practice, policy, and allocation of resources.

**BUILD EQUITY**  
Support and lead efforts to change organizational and systemic policies and practice to advance racial and ethnic equity.

**INFLUENCE BELIEFS**  
Support and lead awareness, education, training, and movement building to address individual, organizational and systemic biases.



▶ SCAN FOR MORE ON  
Access Grants &  
Faith-Based Grants



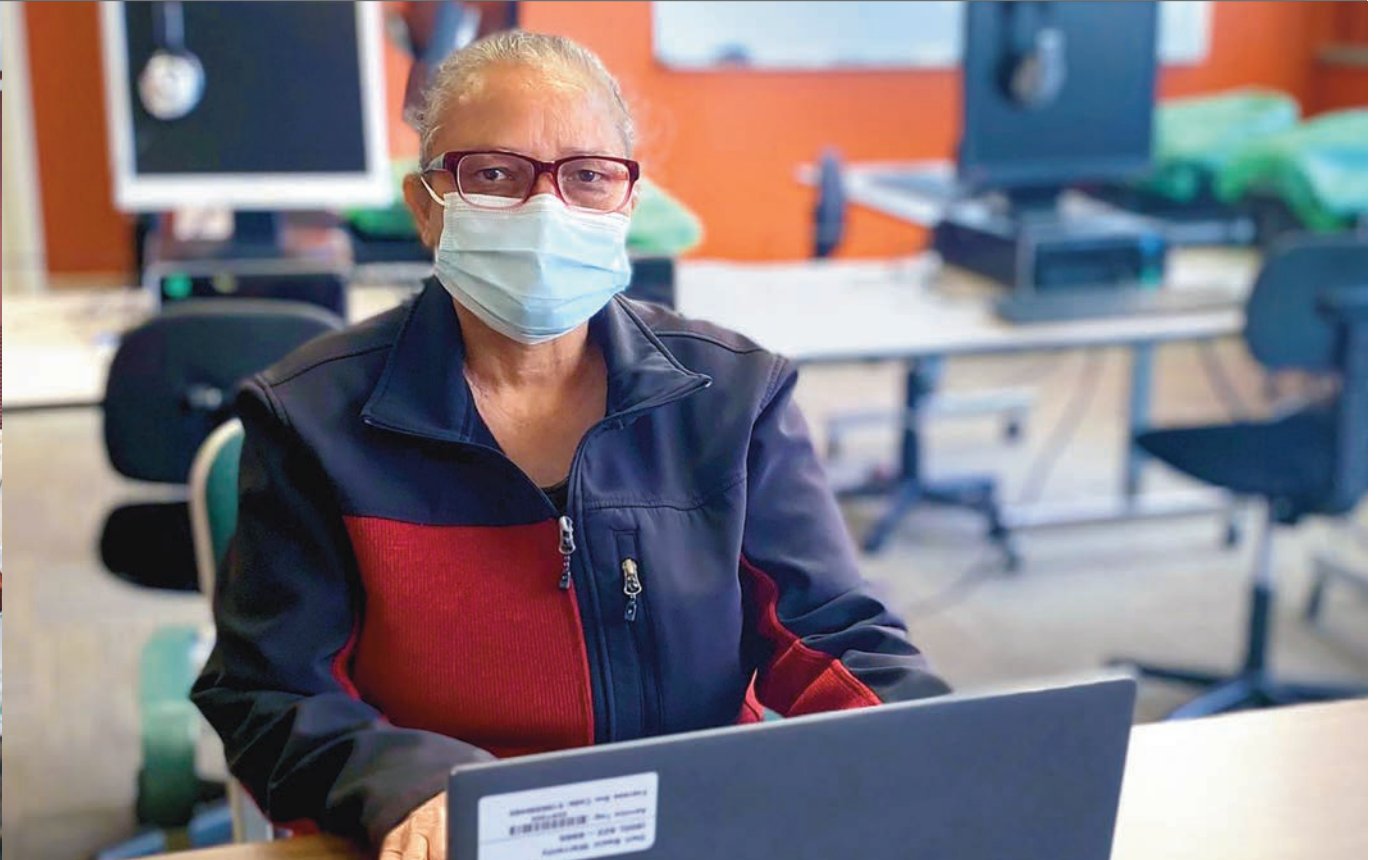
OUR STAFF  
INSIGHTS →



MEGAN BURKE  
Director,  
Community Impact  
Grantmaking

“ Nonprofits of all sizes, including faith-based organizations, committed to addressing structural racism and promoting equitable mobility are essential partners in advancing the Foundation’s efforts. Their programs exemplify the creativity and breadth of services that can drive change. ”

# OPENING OUR DOORS WIDER



What we heard from the community taught us valuable lessons about how we work: we need to lean in and listen to residents and service providers who are closest to the community and support strategies that break new ground. It was time to open our doors wider.

▲ A grant awarded to Center for Leadership and Justice was used to hire a bilingual, bicultural community organizer to support residents of the Frog Hollow neighborhood.

## Faith-Based Grants

In 2020, Hartford saw faith communities catalyze their congregants around social and racial justice issues.

The Foundation convened Greater Hartford faith leaders to learn how we could partner in their work. In June 2021, the Foundation awarded **33 grants totaling \$300,000** to faith-based organizations helping residents disproportionately affected by COVID-19 and systemic racism or advancing community engagement in racial and social justice.

## Access Grants

Our region is served by an ever-expanding array of nonprofits, some of which were not familiar with Foundation procedures and face barriers to funding.

In response, the Foundation launched Access Grants. Preference is given to organizations with leadership and staff that reflect the community they serve, prioritizing those that benefit traditionally marginalized communities.

In its first year, the Foundation awarded two rounds of **Access Grants to 33 nonprofits**, totaling more than **\$1.1 million**. Recipients that can demonstrate progress and potential impact beyond the grant period will be considered for continued support. Several Access Grants were augmented by dollars from the Action Fund for Racial Justice (see page 28).

▲ Sandra, originally from Puerto Rico, has been taking classes at Literacy Volunteers of Greater Hartford. Her goal is to understand more English—in a few months, she feels she’s made an improvement.



▶ **SCAN FOR MORE ON COVID-19 Response Fund & The American Rescue Plan Act of 2021**



**OUR STAFF INSIGHTS** →



**TARA SUNDIE**  
Community Impact Manager

“ We are a learning organization, so we value hearing from nonprofits about how we can be more accessible, especially to organizations that are more proximate to community. ”

## COVID-19 Response Fund

The public health and economic crises that emerged from the COVID-19 pandemic led the Foundation to launch coordinated fundraising and emergency grantmaking functions.

Grantmaking took place over three phases. The first phase focused on providing for basic human needs. The second phase focused on the costs of reopening safely. The third phase (in 2021) focused on vaccine equity and learning loss, and the Foundation’s regular grantmaking addressed recovery from the pandemic.



▶ Lawrence S. Young, Charter Oak Health Center Chief of Staff and Hartford Gay & Lesbian Health Collective Board Member, gets the COVID-19 vaccine.

### COVID-19 Response Fund by the Numbers:

 **275 GRANTS** were awarded

 **\$10.77 MILLION** of funding was awarded

 **547 DONATIONS** were made to the fund

A full report, including a list of all grants, is available online.

### The Foundation listened to the needs of nonprofit partners and residents, and responded by:

- ▶ Streamlining our grant application, sharing grantmaking rubrics publicly, implementing trust-based processes, and more as we continue to learn from our nonprofit partners.
- ▶ Updating our processes to make funds more accessible, especially to smaller organizations and those with whom we did not have a relationship prior to the pandemic.
- ▶ Continuing to explore our unique role in filling funding gaps—with an eye toward equity—as federal recovery dollars make their way into our communities.

## Using ARPA Dollars for An Equitable Recovery

The American Rescue Plan Act of 2021 (ARPA) provided an infusion of federal dollars into state and local governments to help reverse the negative economic and social impacts of the pandemic.

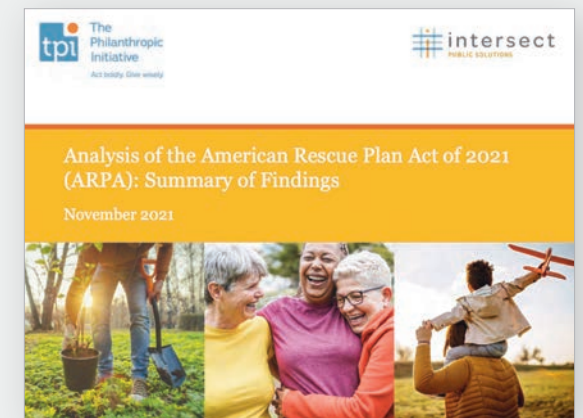
This created a tremendous opportunity to recover and even rebuild more equitably but required that dollars be applied effectively.

The Foundation commissioned research to capture how our state, municipalities, and local school districts are using ARPA dollars. The research also looked at how other community foundations are accounting for ARPA funds in their grantmaking.

The findings garnered national attention and are informing Hartford Foundation strategies.

Going forward, we plan to:

- ▶ Include information about equitable distribution and sustainable programming in our grantmaking.
- ▶ Use our capacity building resources to assist nonprofits seeking and receiving grants funded with ARPA dollars.
- ▶ Identify opportunities to partner with local leaders, ensuring equitable uses of ARPA funds.



▶ This report can be found on our Publications page at [hfgg.org/publications](https://hfgg.org/publications)



# DIVERSIDAD IGUALDAD INCLUSIÓN

To achieve our mission and create a truly vibrant and inclusive region, we must take significant steps to dismantle structural racism and advance equity in social and economic mobility in Greater Hartford's Black and Latinx communities.

By listening and engaging with the community, and considering all available research and information, we have identified five interdependent outcome areas for our work. ▶



Higher Opportunity Neighborhoods



Employment Opportunities



Basic Human Needs



Arts and Culture



Civic and Resident Engagement

▲ The Hartford Heroes mural at 463 Park St. features Elba Cruz Schulman, Maria Colon Sanchez, and Edna Negron. The murals are part of Nuestra Historia: Frog Hollow, funded by a Neighborhood Beautification grant to Southside Institutions Neighborhood Alliance (SINA).





▶ SCAN FOR MORE ON  
Higher Opportunity  
Neighborhoods



OUR STAFF  
INSIGHTS →



ERIKA FRANK  
Senior Community  
Impact Officer

“The pandemic reinforced the importance of quality affordable housing, small businesses, and community building. Together, we will seek to ensure all residents can participate in neighborhood growth and vitality.”



National research has linked neighborhood beautification to increased community safety, social connectedness, and physical and psychological health in addition to higher property values.

To respond to resident voices and support the work of area nonprofits, the Foundation issued a request for proposals for projects aimed at making Hartford’s neighborhoods more attractive, safe, and vibrant. Projects included “cleaning and greening,” murals and public art, and external building improvements.

This initial grant cycle helped us better understand the importance of including residents in decision making and coordinating with stakeholders early in the process to ensure barriers are identified and dollars are directed toward meaningful enhancements. In 2022, the Foundation is partnering with the City of Hartford to provide a more comprehensive Love Your Block grant program, led by residents and community partners.

- 15 GRANTS TOTALING **\$230,960** awarded
- 1,350 residents engaged
- 1,252 hours volunteered
- 58 organizations collaborated
- 28 public art pieces installed
- 9 lots cleared
- 5 green spaces developed

▲ The Foundation awarded a \$186,000 grant to the City of Hartford for the Love Hartford initiative, focused on building civic pride and neighborhood resiliency.

## READY FOR BUSINESS Hartford Small Business Emergency Grant Program



ACROSS THE 3 PHASES OF THE PROGRAM:

TOTAL AWARDED  
**\$2.9 MILLION**

TOTAL AWARDED TO  
WOMEN-OWNED BUSINESSES  
**\$1.4 MILLION**

GRANTS BY RACE / ETHNICITY

BLACK / AFRICAN AMERICAN	\$1.3 M
HISPANIC / LATINO	\$917 K
WHITE	\$423 K
OTHER	\$260 K

AVERAGE GRANT **\$7,616**

JOBS MAINTAINED **1,480**

In 2021, the City of Hartford partnered with the Foundation, Capital for Change, and other small business technical assistance providers to offer a third round of small business emergency grants.

The Hartford Foundation contributed a total of \$1.1 million across three phases of the program, \$905,000 of which went directly to small businesses.

▲ Brittany Cooper, LSCW, MSW, is Founder and Clinical Director of Power of Choices, a mental health provider that participated in the Hartford Small Business Emergency Grant Program.

▲ Source: Hartford Small Business Emergency Assistance Grant Program Presentation, City of Hartford



▶ SCAN FOR MORE ON  
**Employment Opportunities**



**OUR STAFF INSIGHTS** →



**JOEL HICKS-RIVERA**  
Senior Community Impact Officer

“Preparing Greater Hartford’s residents for sustained living-wage employment requires urgency, creativity, and a commitment to interventions across a continuum of care.”

## Co-investing in Opportunity Youth

Opportunity Youth are people ages 16 to 24 who face barriers to employment and education.

Dalio Education and the City of Hartford worked with the Foundation to develop a \$9.85 million, multi-year co-investment strategy to support this expanding group. These grants recognize and unleash the talents of all youth who play a critical role in our community’s economy.

**1. COMPASS YOUTH COLLABORATIVE** is expanding its Peacebuilders program to add to their staff of violence interrupters who can de-escalate conflict and build relationships with the hardest-to-reach youth.

**2. OUR PIECE OF THE PIE** is increasing the capacity of the Youth Service Corps, adding 100 youth to the 250 they serve each year.

**3. ROCA, INC.** is a national organization that began working in Hartford, serving young women—including young mothers—who are victims of abuse and neglect.



## Summer Programs

The Foundation supports a wide array of summer programs that help young people have fun, stay safe, and build work experience.

**\$826,000** awarded

**41 agencies**

including 7 first-time grantees

**8,983 total children and youth:**

▶ **5,894** from Hartford

▶ **685** with disabilities

▶ **158** paid counselors in training

Source: Hartford Foundation analysis of 2021 Summer Program grantees’ final reporting.

The Summer Fun Club at Boys & Girls Clubs of Hartford provides safe summer programs at sites across the city. ▼

## Returning Residents

The Foundation has worked with **Community Partners in Action** and its many nonprofit and government partners to help connect returning residents to employment, housing, and civic life.

**2018**

The **Greater Hartford Reentry Welcome Center** opened in September, supported by \$500,000 in multi-year grants for collaborative planning and implementation, staffing, and services.

The Foundation also supports a multi-year independent evaluation to capture learnings and inform program adjustments.

**2021**

The center saw 783 returning residents by June 2021, including 301 end-of-sentence clients (who receive fewer supports than people released with probation or parole).

The Foundation awarded two multi-year grants totaling \$940,000 to support staffing and programs, and to help cover the cost of expanding services in a larger location.

Source: Hartford Foundation analysis of Community Partners in Action reporting



▶ SCAN FOR MORE ON  
Basic Human Needs



OUR STAFF  
INSIGHTS →



DAWN GRANT  
Senior Community  
Impact Officer

“ Too many of our neighbors struggle to make impossible decisions: whether to buy food, pay for childcare, or make the rent. The pandemic only made those choices harder. ”



### Stronger Families, Stronger Futures—Hartford Family Center Network

In 1990, the Foundation launched the Brighter Futures Initiative, a 25-year, \$35 million commitment to help Hartford’s young children be ready for school through six neighborhood family centers.

In 2019, the Foundation helped the family centers move toward a coordinated structure under the Stronger Families, Stronger Futures—Hartford Family Center Network, coordinated by The Village for Families & Children.

In 2021, a grant of \$915,000 was awarded to The Village, which in turn was shared among the community-based agencies managing the Hartford Family Centers.

In 2022, The Foundation is transitioning to a more flexible funding model as the needs of Hartford’s children and families continue to change, and the capabilities of Hartford’s social service agencies continue to grow.

- ▶ The Village’s Early Childhood Learning Center helps prepare pre-schoolers with the skills they need in Kindergarten and beyond.



### Mental Health

The pandemic had a demonstrable impact on mental health, especially among children of color. The Foundation helped increase access to care. For example, **Ebony Horsewomen** was awarded \$25,000 to train and certify 20 BIPOC mental health professionals and 15 experienced horse professionals to expand community counseling services.

### Food Security and Other Needs

During 2021, the Foundation awarded \$600,000 in food assistance grants to 75 nonprofit agencies and municipal governments serving all 29 of the towns in our region to support food security and other basic human needs.

### Ending Homelessness

In 2021, social distancing requirements reduced the number of people who could be housed in shelters. The Foundation awarded a three-year, \$300,000 grant to the **Connecticut Coalition to End Homelessness (CCEH)**. CCEH will help people find a safe place to stay other than a shelter. They expect to support at least 75 Greater Hartford households with emergency requests each year.

- ▶ Demand for mental health care surged in 2021—especially among children of color—emphasizing the need for programs such as those provided by Ebony Horsewomen.



▶ SCAN FOR MORE ON Arts and Culture



OUR STAFF INSIGHTS →



CYNTHIA SANCHEZ  
Community Impact  
Manager

“Arts provide opportunities for learning, economic growth, community resilience, and resident wellbeing. When the arts are accessible to all and truly representative of our community, we all benefit.”

## The arts are vital to our community.

The Hartford Foundation supports Greater Hartford’s arts sector in several ways—supporting organizations that seek to better connect with the community and helping organizations along an internal journey toward equity—all to ensure the arts become accessible to everyone.



**1. The Amistad Center for Art and Culture** launched *Amistad on the Go*, traveling throughout the community with selected items from their 7,000-piece collection that tell the African-American story, supported in part by a \$30,000 grant from the Foundation.

**2. Playhouse on Park** received \$20,000 to implement Diversity, Equity and Inclusion (DEI) training for the boards and staff of both Playhouse on Park and the Music School at Sound Crossing. The training will help identify new leaders of color and diversify audiences to better represent the local community.

**3. Voce, Inc.** was awarded an Access Grant of \$10,000 to support their *Voices of Hartford* choral program. The chamber choir recruited 12 young male BIPOC singers from Hartford and paid each a stipend to take part in community concerts. Voce plans to follow their new choir members through high school, post-secondary education, and ongoing musical careers.

**4.** Launched in 2020, the **Artists of Color Unite!** advisory committee continued its work to improve equitable access to resources for artists of color. They recommended grants of \$179,500 to expand the Artists of Color Accelerate fellows program, and \$220,500 to administer the Independent Artists Fund—a grant program to help artists of color complete art projects.



▶ SCAN FOR MORE ON  
Civic and Resident  
Engagement



OUR STAFF  
INSIGHTS →



CIERRA STANCIL  
Senior Community  
Impact Officer

“Policies and programs can only be successful if they take into account the voices of the communities they are intended to support.”



## Providing support for community engagement.

Civic engagement may take the form of voting, participating in local government, volunteering, or sharing ideas on how resources can be used to make our community a better place. The Foundation is committed to increasing inclusive opportunities for residents of our region to create positive, lasting change.

From its origins as a block watch organization in 1969, **Blue Hills Civic Association** today empowers the people living and working in Blue Hills and surrounding communities to create stable and attractive neighborhoods through organizing,

advocacy, and multi-generational programs. A core support grant of \$150,000 over three years will allow the Association to implement its new strategic plan, strengthening its capacity to serve as a catalyst for a more vibrant Hartford.

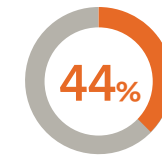
Formed in the summer of 2020, **Friends for Equity in Avon Schools** is a group of parents and residents advocating for an inclusive school culture. An Access Grant of \$18,090 was awarded to raise community awareness through a series of dialogues and educational opportunities.

▶ Blue Hills Civic Association empowers people living and working in the Blue Hills neighborhood through multi-generational programs, such as connecting 400 teens to summer jobs.

## Support for Greater Hartford’s Latinx Community



The Hispanic / Latino population grew from 13.4% to 17.3% of the total population of Connecticut, representing the largest increase of share in population.<sup>8</sup>



44% of people living in Hartford are Latinx.<sup>9</sup>

Connecticut’s voter participation rate (November 2020)<sup>10</sup> ▶

Hispanic	42.4%
Overall	60.5%

**1. Connecticut Students for a Dream** organizes young people rooted in their identities as an immigrant or undocumented individual. The organization was awarded \$100,000 to support youth-led community organizing..

**2. San Juan Center** offers essential public services to Hartford’s Latinx community. In 2021, the Center was granted \$93,680 to continue a partnership with Capital Community College producing a video series on public policy, voting, and community action topics.

**3. Make the Road Connecticut** trains and organizes individuals to build collective power in immigrant, Latinx, working class, and undocumented communities. The Foundation awarded \$100,000 to support organizing around educational issues, civic education, and elevating community safety issues for immigrants.

<sup>8</sup> CTData analysis of 2010 and 2020 Census data tables. | <sup>9</sup> US Census Bureau 2020 Decennial Census P.L. 94-171 Redistricting Data | <sup>10</sup> Voting and Registration in the Election of November 2020, U. S Census Bureau, table 4b | For a full list of sources, visit [hfpg.org/ar2021sources](https://hfpg.org/ar2021sources)



**AMY STUDWELL**  
Senior Community  
Impact Officer

“We are committed to supporting our region’s access to skilled volunteers and innovative programs, empowering the nonprofits addressing significant challenges in our community every day.”



**KELLY CASEY**  
Senior Learning and  
Evaluation Officer

“We strive to make our approach co-creative and appreciative of existing local knowledge and data generated and valued by nonprofits and other partners.”

## Nonprofit Capacity Building

For more than four decades, the Hartford Foundation has been working to strengthen the nonprofits in the region, and our efforts to build capacity in the sector continue to expand in scope.



### PROMOTING VOLUNTEERISM

In February 2020, the Foundation launched a partnership with **Catchafire**, a virtual, skills-based volunteer matching project, connecting professionals who want to donate time with nonprofits that need their skills. Given the success of the first two years of the partnership, the Foundation has increased the number of sponsored memberships from 200 to 250 for 2022.

### Partnership Highlights

(through February 2022)

**200 MEMBERSHIPS**

for local nonprofits

**300+ PROJECTS** matched with a skilled volunteer

**5,000+** volunteer hours donated

Over **\$1 million** worth of services (estimated value)



▲ UR Community Cares is a Manchester nonprofit that connects volunteers with community members who need help with everyday tasks. This flyer, created by Catchafire volunteer Anemo Design, was used to inspire teens to make an impact by volunteering with UR Community Cares.

### SMALL AGENCY PROGRAM

In 2016, the Hartford Foundation launched its Small Agency Program to focus on the specific needs of nonprofits with budgets less than \$300,000 / year.

In 2021, **the Foundation supported 25 small agencies with \$144,000** in general operating support, strategic planning, and other small projects. Our approach allows us to serve as a thought partner in their ongoing development.

### SOCIAL ENTERPRISE ACCELERATOR

Six organizations were selected for the second cohort of the Foundation’s Social Enterprise Accelerator, designed to help nonprofits start or grow mission-aligned earned income ventures.

The program allows nonprofits to raise unrestricted dollars while infusing entrepreneurial thinking and action into their organizations. Each of the “Super Six” developed a business plan, pitched their concept to potential donors, and continues to receive coaching.

## Strategic Learning and Evaluation

The Hartford Foundation’s Strategic Learning and Evaluation activities inform action on our five outcome areas and Foundation-wide.

The Foundation is committed to building evaluative capacity internally and among our nonprofit partners and growing approaches to co-creating evaluations with grantees. Final reports and key learnings are available on our website.

### DATAHAVEN

In 2021, the Foundation awarded a grant of \$180,000 to support the DataHaven Community Wellbeing Survey and Greater Hartford Community Wellbeing Index. The survey collects and the index compiles measures of wellbeing related to economic opportunity, physical and mental health, basic needs, civic engagement, and other data points not available elsewhere.

### CTDATA COLLABORATIVE

CTData works to empower an ecosystem of data users by democratizing access to public data and building data literacy to inform decision making. The Foundation’s grant of nearly \$123,000 supports several of its programs including the Hartford Data Collaborative, the Equity in Data Community of Practice, and the Youth Civic Data program.



▶ SCAN FOR MORE ON  
**Community Leadership**



**OUR STAFF INSIGHTS** →



**JUDY MCBRIDE**  
Director, Strategic Partnership Investments

“ We’ve learned that we must listen intently, speak plainly, and remain flexible. This work demands humility, collaboration, and commitment. ”

## Community Leadership

We have chosen to take a greater leadership role in our community, forge key partnerships, and use all tools at our disposal to shift power in Greater Hartford’s Black and Latinx communities.



hispanicfederation

**The Hispanic Federation** is using a \$1 million Foundation grant to support their Communities of Color Nonprofit Stabilization Fund. This fund galvanizes organizations led by and serving Latinos, allowing each agency to determine where resources should be spent, through a racial and social equity lens.



In 2021, **The Prosperity Foundation (TFP)** used a \$1 million Foundation grant to hire its first full-time executive director, secure marketing, strategic planning, and fundraising consultants, and upgrade its grantee management software. TFP also made 16 grants to Black-led nonprofits in the Hartford region.

## Connecticut Urban Opportunity Collaborative (CUOC)



In January 2021, Connecticut’s three largest community foundations were selected to participate collectively in the inaugural cohort of community foundations in NEON (Nexus for Equity + Opportunity Nationwide).

Known as the **Connecticut Urban Opportunity Collaborative (CUOC)**, the three foundations develop collective strategies to dismantle structural racism and advance social and economic mobility. By aligning their strategic and programmatic efforts, CUOC will create an actionable plan that builds on each organization’s strengths.

## Greater Together

COMMUNITY FUNDS

136 GRANTS



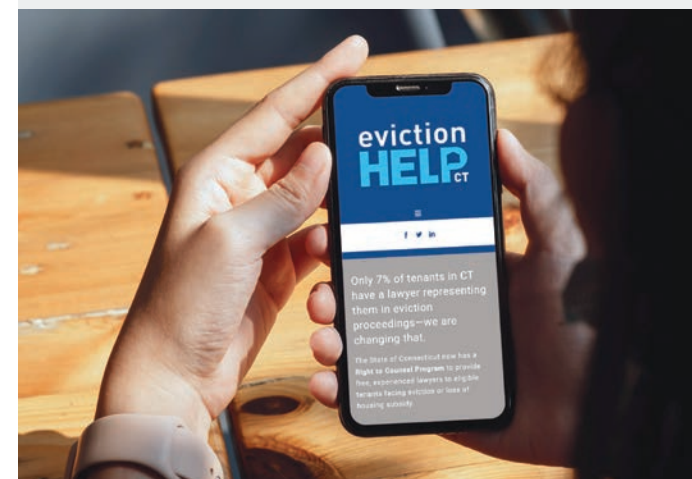
In 2019, the Hartford Foundation launched one of the most ambitious participatory grantmaking programs in the nation. The \$2.9 million, **Greater Together Community Funds** initiative established 29 funds, one for each town in the Foundation’s region. Each community received \$50,000 for current grantmaking and \$50,000 for its fund endowment.

▶ **By the end of 2021, 21 Greater Together Community Fund advisory committees had made 136 grants totaling nearly \$500,000, with the other eight working toward grantmaking.**

The Hartford Foundation’s Board of Directors approved an additional \$1.45 million of funding in 2022, providing each of the 29 funds with \$50,000 (\$30,000 immediately available for grantmaking and \$20,000 invested in each fund’s endowment).

## Public Policy

Foundation staff regularly share learnings with officials in Greater Hartford, state agencies, and policymakers. This includes hosting meetings, offering testimony on potential legislation, writing op-eds, and commissioning research.



**The Foundation awarded \$106,400 to the Commission on Women, Children, Seniors, Equity, and Opportunity** to support training on new Racial and Ethnic Impact Statements. This tool was created to inform state lawmakers and the public of the potential impact of legislation upon communities of color.

**Connecticut’s 2021 Right to Counsel law** was among the first state-wide laws in the nation. The Foundation awarded \$130,000 to the Connecticut Bar Foundation for evaluation of the program, helping ensure tenants have a more equitable opportunity to remain in their homes.

▶ The website [evictionhelpct.org](http://evictionhelpct.org) allows tenants facing eviction to find free legal representation.



GIVE TO THE  
Action Fund for  
Racial Justice



OUR STAFF  
INSIGHTS →



FRANCESCA  
BORGES GORDON  
Director of Development,  
Outreach and External  
Relations

“ With options such as creating your own fund, contributing to the Action Fund for Racial Justice, or joining a giving circle, the Foundation provides a broad range of opportunities for you to realize your philanthropic vision. ”

## Dismantling structural racism requires a long-term commitment.

Launched in June 2021, the Action Fund for Racial Justice is a current-use fund designed to address ongoing community needs.

By year’s end, the Fund received donations exceeding \$500,000 and grants were awarded to nonprofits working to dismantle barriers to opportunity for communities of color, rebuild more equitable systems, and/or support those adversely affected by systemic racism.

Your continued support moves us closer to the change we know is possible.



LAUNCHED IN JUNE 2021

**ACTION FUND FOR RACIAL JUSTICE**

Action Fund dollars supplemented grants in July 2021 to →

- a. Achieve Hartford! Summer Transition and College Persistence programs
- b. Blue Hills Civic Association Families Building Wealth program
- c. Capital Workforce Partners Summer Youth Employment and Learning Program (SYELP)
- d. Center for Children’s Advocacy Youth SPEAKS
- f. The Farmington Libraries Advancing Equity, Diversity and Inclusion
- g. HEDCO, Inc.

### Seventeen Access Grants were supplemented with Action Fund dollars in October 2021:

- |   |   |                                       |
|---|---|---------------------------------------|
| 1. Amistad Center for Arts and Culture          | 6. Friends for Equity in Avon Schools       | 12. Mutual Aid Hartford               |
| 2. Black Business Alliance                      | 7. Gifts of Love                            | 13. RE-Center                         |
| 3. Connecticut Women’s Legal and Education Fund | 8. HartBeat Ensemble                        | 14. School and State Finance Project  |
| 4. Ebony Horsewomen                             | 9. Hartford Decides                         | 15. Saint Justin-Saint Michael Parish |
| 5. Educators for Excellence (Connecticut)       | 10. Hartford Health Initiative              | 16. The Sheff Movement                |
|   | 11. Literacy Volunteers of Greater Hartford | 17. Voce, Inc.                        |



## Our Giving Circles bring together individuals with a shared passion for their community.

### Black Giving Circle Fund

Members of the Black Giving Circle Fund work to create sustainable change in the Black community by leveraging philanthropic efforts of donors and celebrating Black philanthropy. The group voted to award two grants in 2021.



◀ **Health Equity Solutions** received \$27,500 to train and empower residents to advance the implementation of legislation passed in 2021 in response to the significant racial disparities in healthcare access and delivery exacerbated by the pandemic.

**The West Hartford African American Social & Cultural Organization** received \$2,500 to fund a plaque commemorating the Reverend Lemuel Haynes, a local resident who played an important, groundbreaking role in early American history.

### Catalyst Endowment Fund

Throughout 2021, members of the Catalyst Endowment Fund learned about the historic roots of discrimination in housing access, quality, and stability. In response, Catalyst members awarded grants totaling nearly \$54,000 to three nonprofits.



◀ **Desegregate CT** works to educate the public about how equitable, transit-oriented communities are critical to desegregation and housing affordability.

**Keep The Promise Coalition** empowers community members affected by discrimination, both inside and outside Connecticut's mental health and housing support systems.

The Fair Share Campaign for a More Equitable Connecticut from **Open Communities Alliance** is a statewide campaign to promote the Fair Share planning and zoning process, which demonstrates how every town can meet its affordable housing needs.

### Latino Endowment Fund

In October, LEF joined forces with the **Hispanic Federation** to host a virtual seminar where keynote speakers and panelists discussed the economic barriers, challenges, and opportunities in the Latino community.



The Hispanic Federation joined LEF to provide \$25,000 in grants to the **Spanish American Merchants Association (SAMA)** to launch "PROGRESSO," a pilot program providing capacity-building to ten Latino-owned businesses and Latino business consultants.

LEF approved 2 grants totaling nearly \$50,000:

◀ **Hartford Public Library's Mujeres Emprendedoras** program provides professional development, office space, childcare, and financial education to immigrant women entrepreneurs.

**Know Thy Neighbor** brings together Hartford residents with police and city agencies to create community-driven change.

 Scholarship Program

**\$1.8 M**  
in scholarships

**600+ students**  
attending two- and four-year college and graduate programs

**4 new scholarship funds**



◀ In October, the team launched a fully redesigned website to help students and parents identify a host of scholarship opportunities.



▶ **SCAN FOR MORE ON Giving Circles & Scholarship**



▶ SCAN FOR MORE ON  
United on the  
Road to Justice



OUR STAFF  
INSIGHTS →



**TOM ZELEZNOCK**  
Senior  
Communications  
Officer

“ Our Greater Together event is a perfect way to celebrate our donors and provides an excellent opportunity to share stories of the impact we seek to make in partnership with the region’s nonprofits. ”

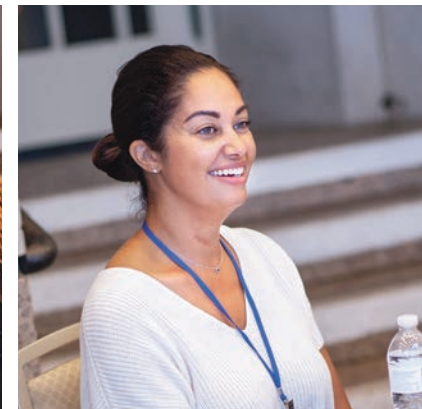
# UNITED on the ROAD to JUSTICE

## Greater Together 2021

On September 28, more than 400 people joined us in person and online for our annual event, Greater Together 2021. The evening at the Bushnell Center for the Performing Arts celebrated our generous donors and community, highlighting our commitment to dismantling structural racism.



◀ The evening’s highlight was a conversation with **Heather McGhee**, social justice activist and author of the best-selling book, *The Sum of Us*. Ms. McGhee challenged attendees to become allies by learning how the current systems were created and embracing the “Solidarity Dividend,” the gains achieved when people of different races come together.



### ▲ Community Conversations

Antiracist work is happening throughout Greater Hartford; groups of neighbors are coming together to address racism and inequity as they are revealed in their own towns. This is painstaking, emotional work that benefits from the support of friends and allies. Before the main event, the Foundation invited people from twelve towns who are engaged in this work to join a conversation with Ms. McGhee about what they have learned in their fight against racism and the benefits of sharing best practices and working across town borders.

◀ Foundation President Jay Williams spoke of the Foundation’s work in 2021—a year filled with hope and optimism amid stubborn, resurgent challenges. We reaffirmed our commitment to dismantling structural racism through our new Action Fund for Racial Justice and introduced new staff members with specific experience across our outcome areas.

◀ Guests were welcomed by an original, pre-recorded performance by Hartford artists **Tang Sauce, Royael, and Ym** (formerly known as chad browne-springer), all of whom are inaugural Artists of Color Accelerate fellows. During the program we heard from several organizations that received grants in 2021, including those from the Community Funds in Newington and South Windsor.





▶ SCAN FOR MORE ON  
Finance &  
Investments



OUR STAFF  
INSIGHTS →



JOSEPHINE  
MORRISON  
Director of Finance

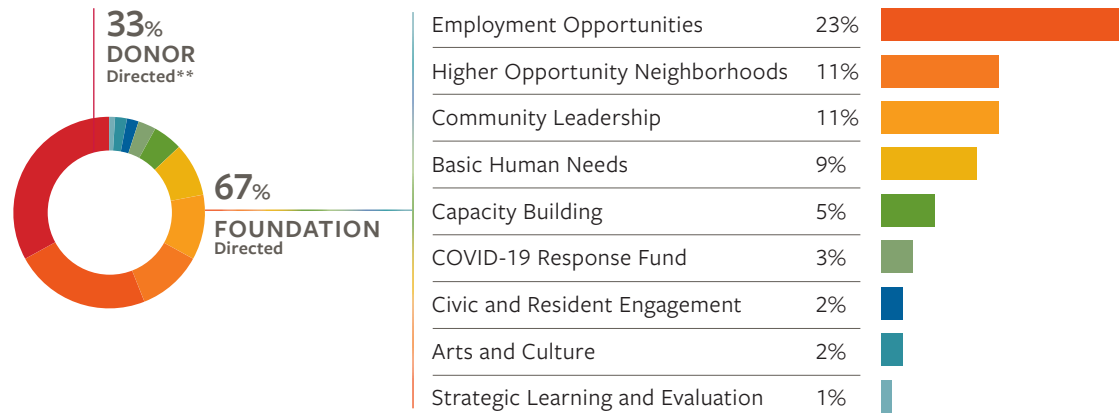
“ We are committed to upholding the community’s trust as good stewards of the resources given to us and remaining transparent in every aspect of our work. ”

**GRANTMAKING & ENDOWMENT 2021**

The Hartford Foundation expanded its impact in 2021, awarding \$45.2 million to nonprofit organizations aligned with our strategic priorities.

**GRANTS BY OUTCOME AREA** ▶ How 2021 Grants Were Directed

TOTAL GRANTS\* ▶ \$ 45,156,873 | INDIVIDUAL GRANTS ▶ 3,262



**ENDOWMENT BY FUND TYPE** ▶ as of December 31, 2021

Our carefully managed endowment guarantees the endurance of our resources and the progress it supports. We balance risk and return, growth and spending so we can protect tomorrow’s assets while addressing today’s needs.



SUMMARY OF FINANCES	2021	2020
<b>ASSETS</b>		
Investments	1,231,795,878	1,107,779,990
Other Assets	16,094,665	17,326,031
Total Assets	1,247,890,543	1,125,106,021
<b>LIABILITIES AND NET ASSETS</b>		
Grants and Other Payables	20,330,597	20,499,024
Other Liabilities	15,660,812	15,307,482
Net Assets	1,211,899,134	1,089,299,515
Total Liabilities and Net Assets	1,247,890,543	1,125,106,021
<b>REVENUES</b>		
Contributions	24,529,055	26,726,704
Other Revenue (Loss)	1,535,305	1,251,784
Total Revenues	26,064,360	27,978,488
<b>GRANTS AND EXPENSES</b>		
Grants*	45,156,873	52,695,316
Program Support and Foundation-Administered Projects	2,637,116	2,507,329
Operating Expenses	8,479,530	8,240,032
Total Grants and Expenses	56,273,519	63,442,677
<b>TOTAL INVESTMENT RETURN</b>	152,808,778	100,709,141
<b>TOTAL ASSETS</b>		
Beginning of Year	1,125,106,021	1,063,228,767
End of Year	1,247,890,543	1,125,106,021

\* Does not include grants from agency endowments.

For a complete copy of the audited report of the Hartford Foundation’s 2021 finances, or for a copy of our tax return (IRS Form 990), visit [hfpg.org/audit](https://hfpg.org/audit) or contact the Finance department at 860-548-1888.

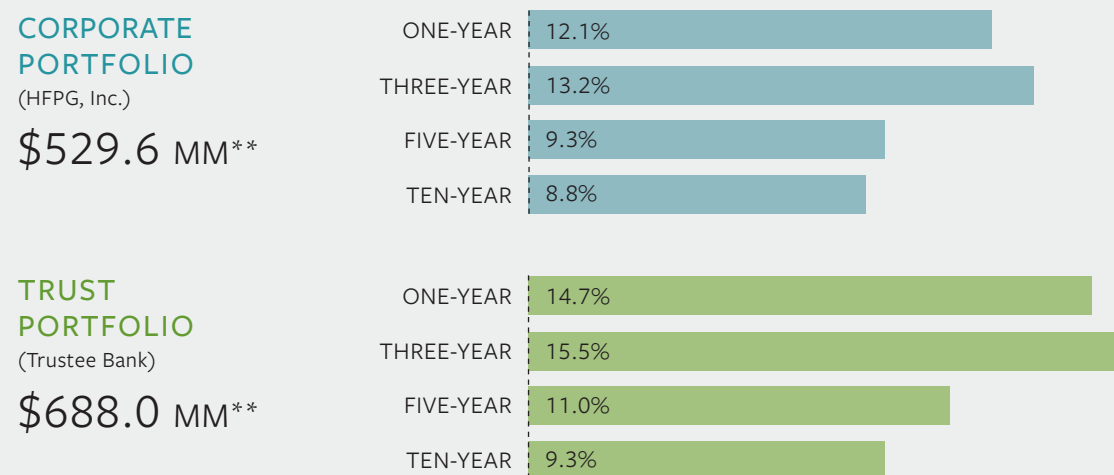
### INVESTMENT RETURNS

The Hartford Foundation’s assets are managed by its corporate affiliate, HFPG, Inc. (the “Corporate Portfolio”) and by the Hartford Foundation Trust (the “Trust Portfolio”).

Northern Trust serves as the custodian of the Corporate Portfolio. Crewcial Partners LLC serves as the Foundation’s investment advisor. Funds are commingled for investment purposes and are invested in a diversified manner with external professional investment managers selected by the Foundation’s Investment Committee at the recommendation of Crewcial Partners.

Bank of America, N.A. acts as the Trustee of the component trusts which are held in a common fund. The Trustee has sole authority to invest in a diversified portfolio with external professional investment managers (which may include Bank of America, N.A. or its investment affiliates, if any) chosen on a competitive basis. NEPC, LLC of Boston, Massachusetts, serves as investment consultant to the Trust. (The other trustee bank, which holds accounts for the Foundation, is Key Bank.)

The investment performance\* of the Foundation’s broadly diversified endowment portfolios for periods ended December 31, 2021 is as follows:



\* These annualized investment returns are net of investment management fees.  
 \*\* Rounded to the nearest \$100,000. Past performance is no guarantee of future results.

### How have the Hartford Foundation’s investments performed?

Despite completing another year living through a global pandemic, asset prices continued to rise, led by U.S. large companies. Interest rates remained low and within a narrow range, although the bond market posted its first calendar-year loss since 2013. Rising inflation was among the many noteworthy financial events of the year, as the CPI’s 7.0% advance reflects the highest inflation rate since the early 1980s. Nevertheless, markets generally took the complex climate that has emerged in stride, although there were signs of diminished confidence that emerged near the end of the year. Against this backdrop, the Foundation’s broadly-diversified Corporate portfolio posted a net-of-fee investment gain of 12.1% while the Trust portfolio returned 14.7%, outperforming their customized target benchmarks by 1.7% and 1.1%, respectively. The strength of the Corporate portfolio’s results in 2021 was driven by strong realized gains from its longstanding venture capital portfolio and served as an example of the ways in which the Foundation’s investment decisions and outcomes are focused on the long periods that sustain philanthropy in the region.

### How does investment performance help to provide grants to the community?

The Foundation’s spending policy and investment strategy are designed to work together to provide a predictable stream of dollars for annual grantmaking to the region’s nonprofits while also prioritizing the preservation of the inflation-adjusted value of the funds in the endowment so the impact of future grantmaking can be as effective as it is today.

► For our full Endowment Investment Annual Report, visit [hfpg.org/publications](https://hfpg.org/publications)



### ► INVESTMENT COMMITTEE

During 2021, the Investment Committee met virtually. (A list of committee members is included in our Committee section on page 76.)

Our donors' generosity and passion for community fuel our work across the region.

SCAN TO LEARN MORE ABOUT HOW YOU CAN JOIN OUR MISSION ▶



**FOLLOW US**

f t v i in

**STAY IN THE KNOW**

Get the latest news—SUBSCRIBE to our monthly newsletter.

**GIVE FOR RACIAL JUSTICE**

Make a difference today—DONATE to the Action Fund for Racial Justice.

**CREATE A FUND**

CREATE A FUND that matches your interests.



We'd love to have you join our work in progress, and help you achieve your own philanthropic goals. ▶



DEBORAH ROTHSTEIN  
Vice President for Development  
860-548-1888 x1019  
drothstein@hfpg.org

**TYPES OF FUNDS**

The Hartford Foundation for Public Giving offers a wide range of options for those who want to create or contribute to a fund. Donors can choose the type of fund that best suits their particular circumstances, goals for giving, and desire for involvement.

- ▶ **Unrestricted Endowed Funds** address a broad range of local needs. Donors entrust the Foundation to use the fund's income for grants that respond to the community's changing needs.
- ▶ **Field of Interest Funds** are designed by the donor to accomplish a broad charitable goal or purpose, such as improving health care, elementary education, or the region's cultural life. Donors direct the Foundation to target funds to this topic or cause, focusing dollars on the most promising organizations working in the field at any given time.
- ▶ **Donor-Advised Funds** are created by donors who wish to remain actively involved with grantmaking. Donors may recommend specific grants to their favorite charity; they may also consult with Foundation staff for guidance on effective grantmaking in their area(s) of interest.
- ▶ **Designated Funds** are created by donors who wish to specify one or more organizations to receive all or a percentage of the income from the fund annually. The Foundation carries out the donor's directions, ensuring that the named agency receives the income to achieve its charitable purposes.
- ▶ **Individual Scholarship Funds** are created by donors to help area students afford a college education. Donors can create a named fund with specific selection criteria and may participate in the selection process.
- ▶ **The General Scholarship Endowment Fund** combines contributions, of any amount, and invests them in order to generate income that funds the Foundation's four-year scholarship program for high school students in the region. Cumulative donations of \$10,000 or more may be built up to establish a named award.
- ▶ **The Community College Scholarship Fund** combines contributions of any amount and invests them to generate income that funds the Foundation's community college scholarship program for high school or GED program graduates in the region.

**Minimum Contributions**

A \$10,000 contribution is needed to establish a fund and begin awarding grants. You can establish a fund with as little as \$1,000 and build up over time. (Some limitations apply.)

## NEW FUNDS

The Hartford Foundation is proud to partner with the many individuals, families, and organizations who created new funds in 2021.



### ENDOW HARTFORD 21

#### *Designated Endowment Fund*

Greater Hartford is home to hundreds of social service, educational, and cultural institutions that keep us healthy, support our most vulnerable neighbors, inspire our creativity, and care for our historical treasures. These institutions make up an integral part of our region’s civic fabric.

The need for endowments became more pressing in 2021 as nonprofits navigated the ongoing pandemic, uncertainty in the financial markets, and unpredictability in annual giving. Endow Hartford 21 was created with the goal of educating donors about the importance of endowment giving. A gift to an endowment today helps build a brighter future.

The Zachs Family Foundation recognized this important need and generously created a matching gift opportunity, Endow Hartford 21. With administrative support from the Hartford Foundation for Public Giving and the Jewish Community Foundation of Greater Hartford, the program encourages endowment giving to more than 50 nonprofits across the region.

Endow Hartford 21 received initial match funding of \$1 million from the Zachs Family Foundation. By December 31, the program had received nearly \$610,000 in additional match donations, thanks to our leading Match donors: Frank Borges, Mary & Ed Budd, Frankie & Robert Goldfarb and Gayle & Steven Temkin.

To give to one of the Endow Hartford 21 funds or learn more about the program, visit [hfpg.org/endowhartford21](http://hfpg.org/endowhartford21).

### Nonprofit organizations with Endow Hartford 21 Funds at the Hartford Foundation:

- ▶ American School for the Deaf
- ▶ The Amistad Center for Art & Culture
- ▶ Bated Breath Theatre Company
- ▶ Bushnell Park Foundation
- ▶ The Children’s Museum
- ▶ Chrysalis Center, Inc.
- ▶ Connecticut Explored
- ▶ Connecticut Foodshare
- ▶ Connecticut Historical Society
- ▶ Connecticut Immigrant and Refugee Coalition
- ▶ Connecticut Science Center
- ▶ Covenant Preparatory School
- ▶ Elizabeth Park Conservancy
- ▶ Girls for Technology
- ▶ Grace Academy
- ▶ HARC
- ▶ Hartford Promise
- ▶ Hartford Public Library
- ▶ Hartford Stage Company
- ▶ Hartford Symphony Orchestra
- ▶ Hartford Youth Scholars
- ▶ Hispanic Health Council
- ▶ Intensive Education Academy
- ▶ Interval House
- ▶ The Mark Twain House & Museum
- ▶ Oak Hill
- ▶ Our Piece of the Pie
- ▶ Playhouse Theatre Group
- ▶ Real Art Ways
- ▶ Renbrook School
- ▶ Riverfront Recapture
- ▶ TheaterWorks
- ▶ Urban League of Greater Hartford





### BERKINS FAMILY FUND

#### *Donor-Advised Fund*

Andréa Hawkins and Doug Barber have been making a difference in Greater Hartford for more than half a century. Andréa served on the board of the Amistad Center for Art and Culture for more than two decades while launching her own consulting firm, Leading Culture Solutions. Doug gave up his role as Director of Rehabilitation at nonprofit Jerome Home when the couple decided to open Berkins Blend Cafe, an independent coffee shop in Glastonbury.

Andréa and Doug chose to open the Berkins Family Fund to support nonprofit organizations that assist entrepreneurial people of color.

“Our young adult children know that we want them to have input into the types of organizations we, as a family, support. The Berkins Family Fund has a full family impact, and, hopefully, a full legacy impact. Our entire family is excited about it.”



### KODAK FAMILY FUND

#### *Donor-Advised Fund*

After meeting at Dartmouth, Nicole and Preston “Skip” Kodak embarked on business careers across the U.S. before settling in Simsbury. Today, Nicole chairs the town’s Diversity, Equity and Inclusion Council; Skip is Senior Vice President of the Americas for the LEGO Group, and serves on the board of Connecticut Children’s Medical Center. Together, they actively advocate for issues of diversity, equity, and inclusion while raising their five children.

How they got here is atypical—their lives were forever changed when they adopted two children from Rwanda in 2011. Building a biracial family from a position of privilege, the Kodaks became more deeply aware of the disparities and biases built into our country.

They opened the Kodak Family Fund to address equitable access to food, housing, education, health care, and justice for underserved and vulnerable people, especially in the Hartford area.

### JOHN O. AND JUANITA J. ALDEN FUND

#### *Unrestricted Endowed Fund*

Invited to visit San Antonio, Texas, by her former roommate, “Nita” ended up taking a job as secretary to the commanding officer of the Randolph Air Force Base hospital. There she met Dr. John Alden, and they were wed once he completed his tour duty. After several years in Indiana, they moved to West Hartford where they lived for 40 years. This fund was created through their estate and is pooled with more than 500 other named funds to support the mission of the Hartford Foundation; improving the quality of life for residents of Greater Hartford

### ANONYMOUS FUND

#### *Unrestricted Endowed Fund*

This couple married in 1983, bringing together a family of six children, 15 grandchildren and seven great-grandchildren. They enjoyed travel, golf, walking, reading, and gathering with friends. Their unrestricted fund will help to improve the quality of life for residents throughout the region.

### NORA ANTHONY MEMORIAL FUND

#### *Unrestricted Endowed Fund*

A native of Omaha, Nebraska, Nora graduated from Smith College and worked as an editor for Harvard University Press (where she met her husband, Dan). She later completed a Master of English Literature and a Master of Divinity from Yale Divinity School in 1991. Nora and Dan raised three children in West Hartford. In addition to several volunteer positions, Nora enjoyed a twenty-five-year career providing spiritual direction to members of the community. Established in memory of Nora, this fund will support the most pressing needs of Greater Hartford residents.

### MARGARET TRAVIS ATWOOD AND WILLIAM I. ATWOOD FUND

#### *Unrestricted Endowed Fund*

Margaret Travis Atwood was born in Torrington, Conn. She graduated from Phillips-Abbot Academy, received an A.B. from Vassar College, and later an M.A. in American Studies from Trinity College. She married William Atwood in 1949. “Margi” was an active, long-time resident of West Hartford and Bloomfield, serving as a docent at the Wadsworth Atheneum and as a member of both the Saturday Morning Club and The Town & County Club. Established through her estate, this fund will help residents of Greater Hartford for many years to come.

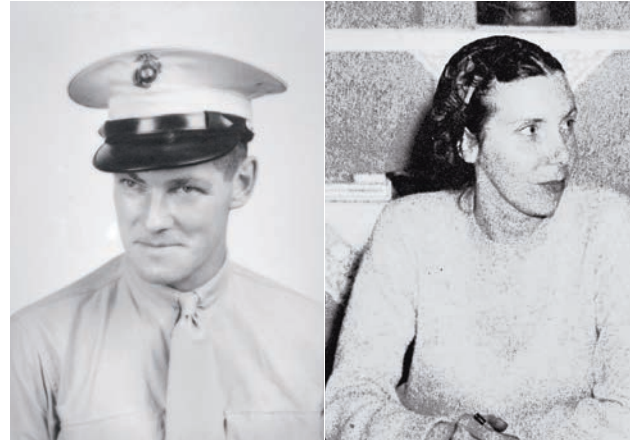


**IVAN A. BACKER FUND**

*Donor-Advised Fund*

Ivan Backer is a born listener. In 1969 Mr. Backer moved to Hartford to direct the new Office of Community Affairs at Trinity College, helping students learn listening skills and instilling a passion for service. He founded Southside Institutions Neighborhood Alliance (SINA) where he was instrumental in forming *Hartford News*, then used his leadership talents to grow a network of friends into a fabric of community organizers.

Even while teaching retirees and writing his memoir, Ivan, with his wife Paula, made time to enjoy and support Cinestudio, a unique classic movie house on the Trinity College campus. Mr. Backer opened a donor-advised fund at the Foundation to benefit institutions such as Cinestudio to be a part of Greater Hartford for years to come with continuing contributions.



**TED AND EVELYN BOTHUR MEMORIAL SCHOLARSHIP FUND**

*Individual Scholarship Endowed Fund*

Theodore (Ted) Bothur and Evelyn Bothur Ferro lived their lives helping others. They married in 1938 and moved from Brooklyn to East Hartford. World War II arrived, and Ted joined the Marines in 1944.

After the war, Ted returned to Pratt and Whitney and became involved with I.A.M. Local 1746. Even when he became union president, he remembered to “always take care of the little guy.” Sadly, Ted passed suddenly in May 1961. Evelyn was the perpetual educator. She turned strangers into friends and friends into family, offering housing and care to old and young she met in the neighborhood, the hospital, and in Hartford. Their son, Tom, opened this scholarship in memory of his parents and their generosity.



**JOYCE CHESEBRO BUCKINGHAM AND HAROLD C. BUCKINGHAM, JR. FUND**

*Donor-Advised Fund*

Joyce and Harold Buckingham arrived in Hartford in 1957, having grown up and married in Oneonta, New York. Early on, Harold was introduced to the marvels of the Foundation by his law partner, the late Hartford Mayor, Foundation Board member and Chair, Bill Glynn. Joyce experienced the inner workings of the Foundation while serving for many years as an evaluator of candidates for Foundation scholarships. They decided to perpetuate their support of the local nonprofit community through gifts to the Foundation. When Joyce died in 2021, her bequest became the initial funding of this donor-advised fund. Later, this will be matched with a gift from Harold’s estate and the Fund will thereafter be an endowed unrestricted fund.



**MAKHI ANTHONY BUCKLY SCHOLARSHIP FUND**

*Individual Scholarship Endowed Fund*

Makhi Anthony Buckley was a gifted young man with a bright future. He was an accomplished athlete on the basketball court and the track, but the gridiron was where he pursued his passion. Makhi played football at Capital Prep High School and American International College, where he studied kinesiology.

Makhi also was active in the community, volunteering at Camp Woodstock, helping to clean up around the Wilson Gray YMCA, and supporting Mayor Luke Bronin with the development of the Hartford Youth Corps.

Makhi, the 19-year-old grandson of anti-violence community activist Brother Carl Hardrick, was tragically killed in Hartford on May 31, 2021. His family and friends established this scholarship to help other Hartford students achieve their personal and educational dreams.





### DICK CAVE FUND

#### *Donor-Advised Fund*

Dick Cave was known for kindness. In addition to being a loving husband and father, Dick was a town official, Boys Scouts leader, coach and founding member of the West Hartford All Sports Council. Dick had a long career in insurance and with the Army Reserves, achieving the rank of Lieutenant Colonel. After he “retired,” Dick volunteered with the Hartford Foundation for 24 years.

He will forever be a part of the Foundation family. When Dick passed in February 2021, his family established the Dick Cave Fund to support a variety of nonprofit organizations, particularly those focused on youth sports and helping those less fortunate. “Our father was a special man,” said his son Rick Cave. “Given how he spent most of his life helping others and his positive experience with the Foundation, the fund is the great way to honor him.”



### BIAGIO “BILLY” AND JEANNE CIOTTO MEMORIAL FUND

#### *Donor-Advised Fund*

Billy and Jeanne Ciotto spent their lives committed to community, friends, and family. Biagio “Billy” Ciotto dedicated seven decades of his life to public service. After a 42-year career at the Connecticut Department of Motor Vehicles, he served as a State Senator, representing the 9th Senate District for six terms. He was known for his ability to reach across the aisle and craft bipartisan solutions. Jeanne was raised in Hartford and worked there before raising their family. Jeanne sang in several choirs and was a longtime volunteer with numerous civic and political organizations. The Ciotto family established this fund to focus on needs in the Hartford region including mental health, Italian heritage, and other programs that would have been of interest to Billy and Jeanne. Billy and Jeanne’s grandchildren have formed a committee to recommend grants from the fund and look forward to honoring their family’s past and future through this effort.



### JEFF DIGEL MEMORIAL ENDOWMENT FUND FOR THE BENEFIT OF COVENANT PREPARATORY SCHOOL

#### *Designated Endowment Fund*

Jeff Digel spent most of his career in real estate finance and development, building many professional contacts and a large network of friends. In 2008, Jeff met Patrick Moore who had a vision of building a tuition-free school for boys that not only taught academics as a preparation for college but also how to live a life of character, integrity, and service to others.

Together, Digel and Moore co-founded Covenant Preparatory School. Through his extensive network, Jeff helped locate a site, raise startup capital, and establish the board of directors (where he served as chair). As a tribute to Jeff, an anonymous donor started this fund to help support the school’s operating expenses for years to come.



### GLADYS B. AND ROBERT E. DUNN FUND

#### *Field of Interest Endowed Fund*

Gladys and Robert Dunn lived lives committed to education and the community. After earning his PhD and studying across the country, Robert taught at West Hartford’s William H. Hall High School for 38 years. He served the school in a host of roles: history and social studies teacher, department head, guidance counselor, assistant principal, and school principal.

Gladys was a guidance counselor at King Philip Middle School. Together, they spent five years at the Seoul International School. In 1995, they returned to West Hartford to enjoy retirement until they passed away in 2017 (Robert) and 2018 (Gladys). Through distributions from their estates, this fund was established to provide need-based support to disabled and elderly populations within Greater Hartford. This fund completes their philanthropic plans, complementing funds they established during their lifetimes for the American School for the Deaf, Foodshare, Hall High School, and youth leadership.



### JOANNE AND DAN EUDY FAMILY FUND

#### *Donor-Advised Fund*

Joanne and Dan Eudy have a long history of working with nonprofit organizations. Joanne served as Director of Corporate Advancement with the Connecticut Forum and as a grants writer for the Greater Hartford Arts Council. She has volunteered as a docent with the Wadsworth Atheneum since 2005, now serving as the New England Regional Director for the National Docent Symposium Council. Dan holds numerous volunteer roles, including with The Village for Families & Children. Together, they chose to open a donor-advised fund to help create social change in their community. “It used to be that if you changed someone’s opinion, action would follow,” said Joanne. “Today, one needs to change actions first, and hope that opinions follow. If there is going to be change, it’s up to each of us to act.”



### FEGED-VERGARA FAMILY FUND

#### *Donor-Advised Fund*

Carlos Feged, an investment management professional, and Martha Vergara, a high school Spanish teacher, are natives of Colombia who live in Glastonbury with their two children.

After living in the area for more than twenty years, they established the Feged-Vergara Family Fund to more deliberately support impactful causes that provide educational opportunities to underrepresented minorities.



### LYNNE FARLEY GILLETTE SOCIAL JUSTICE FUND

#### *Designated Endowment Fund*

Lynne Farley Gillette founded her own real estate firm in Windsor in 1976. Throughout her 45 years in business she worked for fair housing, championed women, made lifelong friends, and gave generously to her community. Lynne was an outspoken advocate for women’s rights, people of color and the LGBT community. Recently the Windsor Human Relations Commission recognized her as a “Phenomenal Woman of Windsor.”

“We wanted a memorial for my mother that would be a catalyst for social justice,” said her daughter Dana. “Creating a fund to support the Windsor Human Relations Commission offered a way to promote better understanding among racial, religious, and ethnic groups and individuals. It was a match for my mother’s passions and her dedication to her town.”



### THE GOVERNOR’S PARTNERSHIP ENDOWMENT FUND

#### *Agency Fund*

The Governor’s Prevention Partnership builds statewide capacity to prevent underage drinking and substance use. By building strategic alliances, The Partnership promotes the overall wellbeing of Connecticut’s future workforce through targeted prevention strategies and mentoring opportunities.

This long-term commitment requires long-term financial support. Co-Presidents Roland Harmon and Kelly Juleson Mongillo worked with the Hartford Foundation to establish this endowment that will provide a source of income for years to come.



**HARTFORD KIWANIS ENDOWMENT FUND AND HARTFORD KIWANIS FUND**

*Designated Endowment Fund / Donor-Advised Fund*

The Kiwanis Club of Hartford is a volunteer organization dedicated to improving the lives of children through programs that fight hunger, improve literacy, and offer guidance. While they support projects throughout the city, their primary focus is on the Northeast neighborhood. The members of Kiwanis provide several safe places for children to learn and grow.

They support a Girl Scout troop, a Boy Scout troop, and a Cub Scout pack while funding a musical instrument education program. The board of Hartford’s Kiwanis Club decided to open a donor-advised fund to help meet its current financial needs, as well as an endowed fund to help ensure the financial security of the club for years to come.



**HARTFORD PROMISE ENDOWMENT FUND**

*Designated Endowment Fund*

In celebration of their 70th birthdays, Mally and Jim Cox-Chapman, MD, started a \$50,000 endowment fund to support Hartford Promise. They first got involved with Hartford Promise with a single scholarship, and then started the Hurdle Fund to provide scholars with emergency assistance for things like repairing a muffler, replacing a phone, or paying for a babysitter.

Thanks to Hartford Promise, intervention in Hartford Schools starts when children are in the 8th grade. With a 3.0 GPA and a 93% attendance record, they will receive a \$20,000 scholarship to any college or university in the country. When the Scholars reach college, they get support from Promise staff and other Promise scholars. While 50% of Pell eligible students drop out by sophomore year, 70% of all Promise Scholars graduate.

**MARCIA L. AND JOHN W. HINCKS FUND**

*Designated Endowment Fund*

After serving in the Navy from 1952 to 1956, John W. Hincks returned to his alma mater Yale to study law. There he met and later married classmate Marcia Robinson Lockwood; together they raised four children in West Hartford. Marcia was an attorney with Aetna and John spent his law career with Robinson & Cole. John served on the boards of many nonprofits, including as chair of Newington Children’s Hospital (now Connecticut Children’s Medical Center) during its move to Hartford. Marcia and John were members of The Catalyst Endowment Fund and the 1925 Society. They chose to open a fund to support philanthropic programs in the Greater Hartford area.



**SEAN WALTER NILAND FUND**

*Donor-Advised Fund*

Sean Niland grew up in Simsbury and passed away unexpectedly in June 2020 at the age of 26. An anonymous donor generously established the Sean Walter Niland Fund in Sean’s memory. Sean’s creativity, sense of adventure, and unique way of looking at the world made a deep impression on everyone he encountered. His mother, father and sister choose to honor Sean by supporting organizations that share his interest in birds, dogs, drumming, and organic farming.

**THE PAISLEY FUND**

*Donor-Advised Fund*

To celebrate her mother and father who passed away in 2021, a longtime friend of the Hartford Foundation established The Paisley Fund to honor her parents’ love of community and their dedication to creating positive and meaningful opportunities for others whenever possible. Over time, the fund will grow, making it possible for the next generation to find their philanthropic voices and continue the family tradition of giving back.



### PHILLIPS SCHRECK FAMILY FUND

#### *Donor-Advised Fund*

Kristen Phillips and Matthew Schreck have been supporters of arts and culture in the Hartford region since they first moved here in 2002. They relocated to Philadelphia in 2011, but the pandemic gave them the flexibility to return to Connecticut in 2020.

In addition to supporting individual organizations that are important to them, Kristen and Matt decided to set up a donor-advised fund to provide an additional funding vehicle and to leave a legacy once they are gone. Pictured with Hartford Symphony Orchestra Music Director Carolyn Kuan, Kristen and Matt look forward to helping keep our community's arts and culture scene vibrant for years to come.

### BRUCE AND DOROTHY B. RALSTON DESIGNATED FUND

#### *Designated Endowment Fund*

Mr. and Mrs. Ralston have worked hard throughout their lifetimes, devoting much of their energy and resources to ensuring others have the basics to live, learn, and grow. When Bruce passed away in 2016, Dorothy decided to establish several funds with the Foundation to continue supporting the types of charities they had been committed to.

"I don't want the funding of the nonprofits that have always been important to us while living to die when we both pass," said Dorothy. "I feel that this is the most important Fund that we have created as it will ensure that the specific charities that we have supported for years will continue to get our support after we are both gone."



### LARRY ALAN SMITH HONORARY FUND

#### *Donor-Advised Fund*

For 31 years (1990-2021), composer Larry Alan Smith served as Professor of Composition at The Hartt School. During that time, he twice provided transformative leadership as Dean (1990-97 & 2018-21). The Larry Alan Smith Honorary Fund was established in June 2021 by the Julius Hartt Musical Foundation's Board of Trustees to honor Dean Smith's many years of service and dedication to the School. The Fund will primarily support the performing arts, and preference will be given to grants that benefit Hartt alumni, students, and/or faculty. Anyone wishing to honor Dr. Smith's contributions to The Hartt School may add to the Fund.



### SNYDER FAMILY FUND

#### *Donor-Advised Fund*

During the day, Jeff Snyder leads the team at First Financial Associates. When he is not on the golf course, you are likely to find this life-long Glastonbury resident, former Eagle Scout, and avid philanthropist supporting an array of charitable causes, including his alma mater Bates College and the Cystic Fibrosis Foundation. Jeff chose to open a donor-advised fund to organize his philanthropic interests and increase the amount he can give each year—he understands the value of philanthropic planning given his line of work.

Jeff chose to name his fund after his family to honor his late father, his mother, and his four siblings.

### TIM AND GERRI SULLIVAN SCHOLARSHIP FUND

#### *Individual Scholarships Endowed Fund*

Tim and Gerri Sullivan understand the importance of a college education and chose to help local students overcome the hurdle of cost. Scholarships will be awarded to students residing in Hartford, graduating from a Hartford high school, and are entering a four-year college full time. Preference will be given to those who have attended Classical Magnet School, are members of the Boys and Girls Club of Hartford, have participated in activities at the Hartford Public Library, and plan to attend Providence College.



**SUMMER ARTS FESTIVAL  
ENDOWMENT FUND**

*Donor-Advised Fund*

The West Hartford Summer Arts Festival (WHSAF) began in 1977 as a venue for West Hartford high school and college students to perform in high caliber productions of Broadway’s musicals and plays.

Since its inception, the program has expanded to include participants outside of West Hartford and found its focus in musicals. WHSAF prides itself on being a learning experience for those interested in various aspects of musical theater, including acting, singing, dancing, orchestra, and technical production. This fund was created to help ensure the Festival has financial support for years to come.



**JOYCE C. WILLIS FUND**

*Field of Interest Endowed Fund*

Joyce C. Willis, who passed away in 2020, graduated from Hartford Public High School and Howard University. She worked for the *Hartford Times* before taking a role in Corporate Communications at The Hartford Financial Services Group where she earned numerous awards during her 25 years of service. She was a founding member of the Amistad Foundation (now The Amistad Center for Art & Culture in Hartford) and the Black Giving Circle Fund at the Hartford Foundation.

She was a board member of The Edward C. and Ann T. Roberts Foundation, the Hartford Symphony, and numerous committees for the United Way in Hartford. In her spare time, Joyce enjoyed traveling in the U.S. and throughout Europe and the Caribbean islands. This fund supports organizations that encourage a love of learning by engaging children in music, theater, dance and visual arts.



**TREES FOR BLOOMFIELD FUND**

*Donor-Advised Fund*

The Trees for Bloomfield Fund was established to support the goal of planting and maintaining trees in Bloomfield and to enable other efforts toward environmental sustainability.

Members of Bloomfield’s Conservation Energy and Environment Committee and the Bloomfield Beautification Committee began meeting with residents in October 2020 to develop a sustainable urban tree program. Together, they launched the Trees for Bloomfield Initiative. “Trees are crucial for a healthy environment,” said Paula Jones, Initiative Chairwoman and Co-Founder. “Trees also lower energy bills, provide shelter, and reduce stress, something we can all benefit from.” Initiative Co-Founder Sharon Mann is hopeful that residents will become part of the volunteer “TreeForce,” helping to plant new trees and to care for the 34 new trees planted in the first year.

**KATHARINE S. WINTER FUND NO. 1 AND KATHARINE S. WINTER FUND NO. 2**

*Unrestricted Endowed Fund / Designated Endowment Fund*

Katharine S. Winter was born in Northampton, Massachusetts, and grew up on and around the Suffield Academy campus. After a successful 30-year career with The Hartford Insurance Company across the Southeast, she returned to the Northeast to care for her parents.

Ms. Winter established two funds through her estate. Fund No. 1 supports the overall mission of the Hartford Foundation; Fund No. 2 supports Camp Courant, the Elizabeth Park Conservancy, the Goodspeed Opera House Foundation, Special Olympics of Connecticut, the Hole in the Wall Gang Fund, FoodShare, The Connecticut Horticultural Society, and the Old State House.

**SUSAN L. WINTER FUND**

*Designated Endowment Fund*

Born in Syracuse, New York, Susan Lowry Winter graduated from Smith College with a Bachelor of Arts degree in Art History. She loved music and enjoyed the outdoors but cherished most of all her role as mother to her daughters (including Katharine Winter) and later to her son-in-law. She lived her life by the Golden Rule and devoted herself to a variety of volunteer positions. This fund, established through her estate, supports organizations that mattered to Mrs. Winter: Hartford Symphony Orchestra, Hartford Hospital, Asylum Hill Congregational Church, First Congregational Church of West Hartford, The McAuley, Old State House, Camp Courant, and Aloha Camp.

**ERNEST C. AND LAURA B. SAEGER WIGNALL SCHOLARSHIP FUND**

*Individual Scholarship Endowed Fund*

Ernest and Laura Wignall were long time Hartford residents and active community members. Laura graduated from Valparaiso University and received an MBA from Northwestern University. Ernest graduated from Norwich Free Academy and worked as a welder at Electric Boat before enlisting in the U.S. Navy during World War II. With a degree in Architectural Construction, he later became a banker, eventually becoming Executive Vice President at Mechanics Savings Bank. Both held leadership positions with professional organizations and nonprofits, including The Salvation Army, Hartford Boys and Girls Clubs, and the Bushnell Foundation. Ernest served as a director of Capital Towers while Laura volunteered as Social Services Coordinator for more than twenty-five years. Emanuel Lutheran Church was a meaningful part of their lives, with both serving on various committees. This scholarship provides support to graduating high school seniors or those currently enrolled in four-year institutions who are members of Emanuel Lutheran Church in Hartford.

**WILLIAM ZOLA MEMORIAL FUND**

*Unrestricted Endowed Fund*

William Zola, known as Bill, was employed by Bedding Barn for many years. He was an excellent cook, enjoyed square dancing and had a keen interest in classic cars. Established through his estate, this fund supports the mission of the Hartford Foundation by putting philanthropy into action to create lasting solutions that result in vibrant communities within Greater Hartford.

**OUR DONORS**

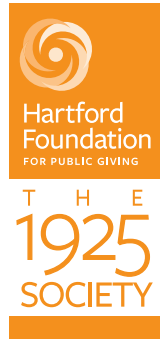
We couldn't do this work without the generosity of our donors.



To learn more about opening a fund, please contact **Deborah Rothstein**, Vice President for Development, at 860-548-1888, ext. 1019

Some of our donors have chosen to remain anonymous.

## THE 1925 SOCIETY



The 1925 Society honors a special group of donors who have made a provision for a legacy gift to the Hartford Foundation as part of their will, estate, and/or financial plan. We gratefully acknowledge these donors for their generosity, foresight, and leadership in creating an enduring legacy for Greater Hartford.

For information on joining The 1925 Society, please contact Deborah Rothstein, Vice President for Development, at 860-548-1888, ext. 1019.

## THE 1925 SOCIETY MEMBERS

Robert and Mary Abel	Gail C. Champlin	Dr. Stanley Fellman	Stephen A. and Myra Johnson	Ann Faude Newbury	Caryl and Robert* Siskin
Susan B. Aller	Mr. Blair G. Childs*	Robert and Linda Forrester	Dennis A. and Donna E. Jolly	The Hon. Jon O. Newman	Esther Spafard
Carole B. Amaio	Mr.* and Mrs. David L. Childs	Ellen and John Franklin	Russell H. and Barbara G. Jones	Don and Brad* Noel	Henry "Skip" Steiner
Tamil and Theresa Anban	Stephan L. and Francine L. Christiansen	Robert B. and Francine L. Goldfarb	Linda J. Kelly	Virginia Loomis Parker	Katharine H. Steinwedell
Catherine H. Anderson	Pamela Churchill	Laurel Goodgion	Mrs. Janet Kepner	Mr. and Mrs. Warren C.* Packard	Edward* and Marilyn Stockton
Margaret T. Atwood*	David W. Clark, Jr.*	Hoyt and Sally Goodrich	Mr. and Mrs. Martin Kesten*	David B. Payne	Leslie M. Stophel*
Gemma C. Baker	Mr. and Mrs. William J. Cochran	Norman A. Grabowski, Jr.	Donna and John* Kidwell	Agnes S. and William R. Peelle, Jr.	Melinda Martin Sullivan
Frank and Sharon Barrett	Barbara V. G. Coffin	Viviane L. Grady	Jim and Jessie Kingston	Patricia K. Pendergrast	Louise L. Sutton
Edward B.* and Elizabeth Bates	Dr. Carol B. Cohen and Mr. Roy I. Cohen	Reverend and Mrs. Peter Grandy	Mrs. Anne-Marie L. Kinsella	Brewster B. Perkins	Carol and Kink* Terry
JoAnne Bauer*	Michael and Naomi Cohen	Peter Grant	Patricia Ann Kiser	Arthur E.* and Sheila Phillips	Ann Thomas and Mike Bonzagni
Maxwell M. and Sally N. Belding*	Sara Marcy Cole	Harry J. Gray*	David and Janice F. Klein	Justin Piergrossi	Jane and Richard E. Thompson
Stephen J. Benedetto	Alison Coolbrith* and Barry Lastra	Nancy D. and Robinson A.* Grover	Nancy M. Kline	Anne Bingham Pierson	James A. Trail
John A. and Laura Berman	James and Marian Cox-Chapman	Christopher H. Hall and Felicity Anne Harley	Mark F. Korber	Dina L. Plapler and Earl F. McMahon	Deborah and Carl Ullman
Nancy and Scott* Bernstein	Mary H. Crary	Elwyn and Elsie Harp	Julie Krug	Barbara S. Podann	Michael J. Vanderlaan*
Virginia Riege-Blackman	Anne Cremer Smith	Sara L. Harrigan	Anne C.* and Lee G. Kuckro	Claire M. and Millard H.* Pryor, Jr.	Gretchen L. vanHoosier
John E. Blair*	Linda Cromwell	Dr. Jacqueline Harris	Beverly J. Malone Ladizki and David A. Ladizki*	Lori* and Stephen Rabb	Ellie and Jim Venneman
John E. Blair*	James M. and Pamela M. Cronin	Charles E. Heilig*	John and Mary Lawrence	Dorothy B. Ralston	Wade A. Vianney
Fred T.* and Mary Blish	Ethel Davis	John W.* and Marcia W. Hincks	Sandra A. Lee	Beth Redstone	Mr.* and Mrs. Bernard S. Vinick
Richard and Barbara Booth	Harold C. and Doreen Davis*	Suzanne M. Hopgood and Frank C.* Lord	Jane A. Lennox	Elenor G. Reid	Mr. Paul J. Volpe
Eleanor Dickinson Borrup	Ruth Ann Coleman Davis	Joseph K. Hooker*	Harriet B. Lidgerwood*	Rod and Janice Reynolds	Lyn Gammill Walker
James C. and Beverly Boyle	Michael Decicco*	Barnaby Horton	Mr. and Mrs. Charles R. Lindberg*	Belle K. Ribicoff	Beatriz Wardlaw
Harold C. and Joyce C.* Buckingham	Bobby DiBella	Margaret C. and Wallace R. Hughes*	Tom and Margah Lips	John A. Riege	Judith S. Wawro
Dody and Bruce Cagenello	Jill Donan	Robert and Gladys Hunter*	Mr. and Mrs. Thomas H. Lorch	John H. and Sali G. Riege*	Sally J. Weisman
Jerome E.* and Eleanor Caplan	Robert and Gladys Dunn*	Bud and Sheila Jacobs	Elaine Lowengard	Stephen H. Reige	Maureen K.* and Richard M. Wenner
Jim and Anne Carroll	Reverends William J. and Hope H. Eakins	Marianne F. Jahn and William H. Barnes	Mr. Lawrence J. Lunden	Jack* and Susan Ritchie	Bob and Mary Ellen White
James J. and Margaret T. Carroll*	James F., Jr. and Isabelle S. C. English*	Debra M. Javit	Brendan and Mimi* Lynch	Mr. and Mrs. Paul Robotham	David C. Wichman, Esq.
Robert E. Carroll*	Susan Lynn Felder*		Mary and Ken* MacCormac	June Miller Rosenblatt*	Ernest C. and Laura Wignall*
Howard L. and Sue Carver			Mr. and Mrs. Thomas E. Mahoney	Ron Roy	Mr. and Mrs.* Michael Wilder
Marie Anne Chabrier*			Mari Merwin	Kenneth* and Susan Rubenstein	Sherwood S. and Magrieta L. Willard
Carl T. Chadburn and Yvette Meléndez			Harry and Mary* Meyer	Richard and Lea Rubenstein	Joyce C. Willis*
			Stephen and Patricia* Middlebrook	Olive Rudolph	Jan Winkler* and Hermine Drezner
			Margaret A. Miller	Chris Rusack and Lisa Gladke	Katherine S. Winter*
			Worthington "Mike"* and Nancy B. Mixer	Peter* and Betsy Russell	Susan L. Winter*
			Maria I. Mojica and Edgar Colon	Mr. and Mrs. R. Malcolm Salter	Sandra B. Wood
			Paul Morrissette	Carol Santry-Covello	Edward and Carol Wrobel
			Thomas Morrissette	Betty Sarubbi	Henry M. Zachs
			Mr. and Mrs.* E. Laird Mortimer, III	William A. and Maxine Rothe* Schortman	Judith M. Zachs
			Frederick J. Mullen	Marcie Shepard	Gerard F. Zak
			Mark and R. Carol Muradian	Ralph M.* and Ruth K. Shulansky	
			Bob and Lynn Murray	Stephen* and Amy Lynn Silverman	
			Art and Reba Nassau	Carol Simpson and Robert Hewey	

.....  
*Anonymous members = 31*  
*\* Deceased*

.....  
 We make every effort to report accurately on those who are leaving a legacy through the Foundation. However, if we have inadvertently overlooked or misstated your information, we offer our sincere apologies. Please contact us so that we may ensure our list is corrected.

## FUNDS

The Hartford Foundation currently administers 1,464 funds.

### DESIGNATED FUNDS

Alleluia House Fund	Connecticut Council for Philanthropy Endowment Fund	East Granby Library Association Book Endowment Fund	The Governor's Partnership Endowment Fund	Hispanic Health Council Endow Hartford 21 Fund	Wayne and Louise Mantz Family Fund
Margot and Lee Allison Fund	Connecticut Explored Endow Hartford 21 Fund	Mary W. Edwards Charitable Fund For the Benefit of the "Mountain" and Granby Land Trust, Inc.	Grace Academy Endow Hartford 21 Fund	Historical Society of Glastonbury Endowment Fund	The Mark Twain House & Museum Endow Hartford 21 Fund
American School for the Deaf Endow Hartford 21 Fund	Connecticut Foodshare Endow Hartford 21 Fund	Mary W. Edwards Charitable Reserve Fund No. 1	Grace Church Restricted Fund	Shepherd Monson Holcombe Fund No.1	Gloria J. McAdam Fund for Foodshare
The Amistad Center for Art & Culture Endow Hartford 21 Fund	The Connecticut Forum Endowment Fund	Mary W. Edwards Charitable Reserve Fund No. 2	Granby Land Trust, Dimock Fund	Shepherd Monson Holcombe Fund No.2	Gioconda B. McGettigan Fund for St. Rose Church
Amistad Foundation Fund	Connecticut Historical Society Endow Hartford 21 Fund	Mary W. Edwards Charitable Reserve Fund No. 3	Granby Land Trust, General Fund	Shepherd Monson Holcombe Fund No.3	Jackie and Dollie McLean Family Fund
Anonymous (CF26) Fund	The Connecticut Immigrant and Refugee Coalition Endow Hartford 21 Fund	Elizabeth Park Conservancy Endow Hartford 21 Fund	Marion and Ellsworth Grant Fund	Shepherd Monson Holcombe Fund for The Bushnell	McLean Foundation Endowment Fund
Anonymous No. 41 Fund	Connecticut Radio Information Service (CRIS) Endowment Fund	Elizabeth Park Conservancy Fund	Greater Hartford Arts Council Fund	Edward R. Huckman Fund	Robert P. Merritt Fund
Anonymous No. 48 Fund	Connecticut Science Center Endow Hartford 21 Fund	John E. Ellsworth Fund	Greater Hartford Chapter AGO Fund	ImmaCare Endowment Fund	Stephen and Patricia Middlebrook Fund I
The ARC of Farmington Valley Endowment Fund	ConnectiKids Endowment Fund	John E. Ellsworth Fund, for the Symphony Society of Greater Hartford, Inc.	William P. Haas Fund I	Immanuel Church Foundation for the Elderly Fund	Shirley M. and Edward H. Morgan Fund I
Artists Collective Fund	Covenant Preparatory School Endow Hartford 21 Fund	Farmington Valley Arts Center Fund	Hall High School Fund for the Common Good	Immanuel Congregational Church Mission Fund	Barbara S. Morley Memorial Fund
ASK Endowment Fund fbo Hartford Art School	Covenant Preparatory School Endowment Fund	Farmington Valley Arts Center Fund, in memory of Stanley D. Fisher	Hands on Hartford Endowment Fund	Loretta K. Ingersoll Fund	Murtha-Garvan Family Fund
Gladys T. and Robert B. August Fund	CREC Greater Hartford Academy of the Arts Endowment Fund	Janet N. Fisk Fund for the Benefit of Windsor Independent Living Association	HARC Endow Hartford 21 Fund	Innovation Fund for Hands on Hartford	Barbara C. Newcomb Fund
Bated Breath Theatre Endow Hartford 21 Fund	CT Humane Society Endowment Fund	Patricia H. Fitt Fund	Ida L. Hartenberg Charitable Fund	Intensive Education Academy Endow Hartford 21 Fund	Oak Hill Endow Hartford 21 Fund
Arline and Joseph L. Baum Fund	John M. K. Davis & Mignon Foerderer Davis Fund for Duncaster	Russell and Virginia Foster Memorial Fund	Hartford Art School, Inc. Special Fund	Interval House Endow Hartford 21 Fund	Oak Hill Endowment Fund
Elsie R. and C. Gordon Beckwith Fund I	Anthony J. and Lucille A. Diorio Fund	The Richard B. Fried Fund for AIDS Connecticut (ACT)	Hartford Kiwanis Endowment Fund	Frances H. Jackson Fund	Old State House Fund
BEENA Fund	John and Rose Draghi Memorial Fund	Friends of New-Gate Prison Fund	Hartford Promise Endowment Fund	Jonathan's Dream Endowed Fund	C. Henry and Mary E. G. Olmsted Fund
Phillip I. Blumberg Fund	Jeff Digel Memorial Endowment Fund for the Benefit of Covenant Preparatory School	Rita Ann Gelinis Fund	Hartford Promise Endowment Fund	Hugh M. Joseloff and Helen H. Joseloff Fund	Our Piece of the Pie Endow Hartford 21 Fund
Fund in Honor of David Borden	Drezner/Winkler Fund	Girls for Technology Endow Hartford 21 Fund	Hartford Public Library Endow Hartford 21 Fund	Journey Found Endowment Fund	John J. Padbury Memorial Fund
Nancy Coleman Braender and W. Philip Braender Fund No. 2	Sara R. and Alan A. Dun Fund	Miriam E. and Leon H. Glazer Fund #1	Hartford Stage Endow Hartford 21 Fund	Junior League of Hartford Endowment Fund	Paradiso Family Fund
The Bridge Family Center Fund	Gladys B. and Robert E. Dunn Designated Fund for the American School for the Deaf	Emma Katz, Sol & Nathan Glazer Memorial Fund	Hartford Stage Fund	Josef and Anastasia Kalvoda Fund	Anne P. and Andrew Pinto Fund
Bushnell Park Foundation Endow Hartford 21 Fund	Gladys B. and Robert E. Dunn Fund for Foodshare	Dorothy C. Goodwin Fund	Hartford Symphony Orchestra Endow Hartford 21 Fund	Ilene and Marty Kaplan Fund for PLAN of Connecticut	Planned Lifetime Assistance Network of Connecticut, Inc. Fund
Fund for Hartford's Camp Courant	Robert E. Dunn Fund	Genevieve H. Goodwin Fund	Hartford Symphony Orchestra Endowment Fund	Frank Kavitsky Fund No. 2	Playhouse Theatre Group, Inc. Endow Hartford 21 Fund
Arnold E. and Mary I. Carlson Fund	Walter J. Dyber Fund	Helen Whittlesey Goodwin Fund	Hartford Youth Scholars Endow Hartford 21 Fund	Koopman Fund fbo Hartford Art School	Playhouse Theatre Group Endowment Fund
Marion H. Chaffee Fund #1		James L. and Genevieve H. Goodwin Fund	Virgil L. and Dorothy H. Hartzog Fund	Leadership Greater Hartford Endowment Fund	Barbara and William Podann Fund
The Children's Museum Endow Hartford 21 Fund			Marjorie F. Hazen Trust	Literacy Volunteers of Greater Hartford Fund	Millard Pryor Memorial Endowed Fund
Childs / Alcorn Fund			Charles, Alice (Murray) and Cheryl A. Heilig Fund	Margaret R. and Stanley B. Loucks Fund	Bruce and Dorothy B. Ralston Designated Fund
Chrysalis Center, Inc. Endow Hartford 21 Fund			Jean McMillan Hemstreet Fund	Harry W. Lynn, Jr. Charitable Trust Fund	Real Art Ways Endow Hartford 21 Fund
Beatrice D. Clapp Fund			Dennis Hersh Humanitarian Fund	Lynne Farley Gillette Social Justice Fund	Doug and Jane Cramphin Teaching Excellence Award at Renbrook School Endow Hartford 21 Fund
Mabel H. P. Clark Trust No. 2			Marcia L. and John W. Hincks Fund	Manchester Area Conference of Churches Endowment Fund	



Richmond Memorial Library Endowment Fund  
 Riverfront Recapture Endow Hartford 21 Fund  
 Sebastian E. Rosano and Carmelina A. Rosano Memorial Fund  
 Moses B. and Ann Rosenauer Fund  
 William J. & Esther L. B. Sander-Anna E. Andersen Fund  
 Vernal M. Schnabel Fund  
 William Schortman and Maxine Rothe Schortman Fund  
 Haig Shahverdian Scholarship Fund  
 George J. Sherman and Lottie K. Sherman Fund  
 Dorothy and Alfred Silberman Chapel Fund  
 Simsbury Land Trust Richard A. Davis Endowment Fund  
 James B. and Beatrice D. Slimmon Fund  
 Douglas T. Smith & Dorothy P. Smith Fund for the Benefit of the Wadsworth Atheneum  
 Ray Smith Endowment for Education and Conservation Fund  
 Sybil Ward Smith Memorial Fund  
 South Windsor Historical Society Endowment Fund  
 Elizabeth W. Stedman Fund  
 Moses Stern Memorial Fund  
 Elizabeth O. Sturtevant Fund  
 Michael and Janet Suisman Community Access Fund  
 TheaterWorks Endow Hartford 21 Fund  
 TheaterWorks Endowment Fund  
 Leonard M. Troub Foundation, Inc. Trust, in memory of Staunton Williams  
 United Way, Inc. DBA United Way of Central and Northeastern Connecticut  
 Urban League Endow Hartford 21 Fund  
 Valley Falls Farm Fund  
 Van Winkle Fund

Wendy F. Vance Trail Fund  
 Stanley W. Vogel Family Fund  
 Robert and Elizabeth von Dohlen Fund  
 The VRN Fund  
 Walker Family Endowment Fund  
 Oscar and Ruby T. Wegman Fund  
 Anna and Isaac Weintraub Fund  
 The Foundation for West Hartford Public Schools Endowment Fund  
 Winding Trails Endowment at the Hartford Foundation  
 Katharine S. Winter Fund No. 2  
 Susan L. Winter Fund  
 Friends of Wood Memorial Library and Museum Endowment Fund  
 Raymond B. and Thelma C. Woodbridge Memorial Fund  
 World Affairs Council Connecticut Fund  
 Father Paul Wysocki and Family Fund No. 1  
 Father Paul Wysocki and Family Fund No. 3  
 Zachs Family Fund for the Bushnell Center for Performing Arts  
 Zachs Family Fund for the Chabad Jewish Center  
 Zachs Family Fund fbo Charter Oak Cultural Center  
 Zachs Family Fund for the Connecticut Children's Medical Center  
 Zachs Family Fund for the Connecticut Historical Society  
 Zachs Family Fund for Hartford Stage  
 Zachs Family Fund for the Hartford Symphony Orchestra  
 Zachs Family Fund for Oak Hill  
 Zachs Family Fund fbo Real Art Ways  
 Zachs Family Fund for Trinity College Hillel  
 Zachs Family Fund for UConn Hillel: The Foundation for Jewish Campus Life

Zachs Family Fund for the Wadsworth Atheneum Museum of Art  
 Joseph A. Zita Fund  
**DONOR-ADVISED FUNDS**  
 4-CT Statewide COVID-19 Relief Fund  
 Abel Family Fund  
 Allen Family Fund  
 Alvord Family Fund  
 American Eagle Financial Credit Union Fund  
 Anonymous Endow Hartford 21  
 Anonymous No. 38 Fund  
 Anonymous No. 45 Fund  
 Anonymous No. 46 Fund  
 Anonymous No. 49 Fund  
 Anonymous No. 50 Fund  
 Aronson Family Fund  
 ASK Endowment Donor-Advised Fund  
 Beatrice Fox Auerbach Foundation Fund  
 Ivan A. Backer Fund  
 Richard and Alice Baxter Fund  
 Lisa and John Behan Family Fund  
 Stephen Benedetto Fund  
 Berkins Family Fund  
 John and Laura Berman Fund  
 Nancy Bernstein Fund  
 David T. Black Memorial Fund  
 Ronald T. Black Memorial Fund  
 The Bluebird Fund  
 Bernard Blum Fund  
 Boccaccio Family Trust  
 Ann E. Thomas and Michael B. Bonzagni Fund  
 Albert and Elizabeth Bourget Fund  
 The Lyman B. Brainerd Family Foundation Fund  
 Sherry L. Brown-Marfuggi Family Fund  
 Iran Brugueras, Jr. SPLASH Fund  
 Charles and Doris Bryan Fund

Joyce Chesebro Buckingham and Harold C. Buckingham, Jr. Fund  
 Budd Family Fund  
 Buhler Family Fund  
 Jim and Anne Carroll Fund  
 Lawrence Wells Case and Florence Reid Case Memorial Fund  
 Dick Cave Fund  
 Yvette Meléndez and Carl T. Chadburn Foundation Fund  
 J and L Chapman Charitable Fund  
 Cheney Family Fund  
 Katherine C. Childs Memorial Fund  
 Biagio "Billy" and Jeanne Ciotto Memorial Fund  
 Anna F. and David W. Clark Fund  
 Mrs. James Sage Coburn Fund  
 David L. Coffin, Jr. Memorial Fund  
 Libbian and Jerry Cohen Fund  
 Michael and Naomi Cohen "Prophet Micah" Fund  
 The Community Caring Fund  
 Connecticut Hispanic Bar Association Fund  
 James Christopher Conrad Memorial Fund  
 Charles B. Cook Fund  
 Lastra Coolbrith Fund  
 The Olcott Damon Smith Fund  
 Lawrence C. Davis Memorial Fund  
 DeBell Family Fund  
 Elena Haynes DeVaughn, Ph.D. Fund  
 Robert "Bobby" DiBella Fund  
 Duclos Family Charity Trust Fund  
 Paul H. Eddy and Elizabeth J. Normen Fund  
 EHRE Fund  
 EHS Family Fund  
 Kate Emery Family Fund  
 Joanne and Dan Eudy Family Fund  
 Fairview ALL IN Fund  
 Fechter Family Foundation Fund

Feged-Vergara Family Fund  
 Fiondella Family Trust  
 Stanley D. and Hinda N. Fisher Fund  
 Daphne G. Fuller Fund  
 Fund for the Deborah Eldridge Service Award of the Estate and Business Planning Council of Hartford  
 Gándara Family Fund  
 Richard P. Garmany Fund  
 Garnett Gibbs Family Fund  
 Brenda C. and Martin J. Geitz Family Fund  
 Gessford-Desmarais Fund  
 Gifts of Music Fund  
 The Giving Tree Fund  
 Anzie O. Glover Memorial Fund  
 Ellen Jeanne Goldfarb Memorial Fund  
 Harry E. Goldfarb Family Foundation Fund  
 Harry E. Goldfarb Family Foundation Fund II  
 Good Family Fund  
 Goodwin Being Fund  
 Greater Hartford Jaycees Fund  
 Richard S. and Doris J. Griffith Fund  
 Kristine Barbara Guest Memorial Fund  
 Brother Carl Hardrick Institute for Violence Prevention Fund  
 Elwyn V. and Elsie H. Harp Family Foundation Fund  
 Hartford Kiwanis Fund  
 Hartford Renaissance District Fund  
 Hartford Rotary Arts for Youth Fund  
 Heiner Tostmann Family Fund  
 Heneghan Family Fund  
 Herrman Family Foundation Fund  
 Hoffman Family Fund  
 Alison and Nathaniel Howe Fund  
 Anthony S. and Evelyn L. Hulme Charitable Fund  
 Ilg Family Fund

Jackson-Batchelder Family Fund  
 JCJ Architecture Fund  
 Donald W. and Dorothy D. Johnson Fund  
 S. A. Johnson Family Fund  
 Marjorie Jolidon Fund  
 David and Helen B. Kaplan Fund  
 Keiller Family Fund  
 Kiser Family Fund  
 Deborah and Steven Kleinman Fund  
 Kodak Family Fund  
 Konover Coppa Family Fund  
 Catherine M. Kornas Fund  
 Beverly J. Malone Ladizki and David A. Ladizki Fund  
 Latino Children's Fund  
 Elizabeth M. Landon and Harriette M. Landon Donor-Advised Fund  
 Lazarus Freckleton Fund  
 Alan and Judy Lieberman Family Fund  
 James A. Lindberg Fund  
 John R. Lindberg Fund  
 Margaret H. Lindberg Fund  
 Tom and Margah Lips Fund  
 Virginia Grace Loomis Memorial Fund for Literacy and Literature  
 Worth and Louise Loomis Foundation Fund  
 Jerome H. and Elaine Title Lowengard Fund  
 David and Dorothy Lund Family Fund  
 Lupariello Family Fund  
 James B. Lyon Fund  
 MacLean Family Fund  
 Eric T. Mahoney Memorial Fund  
 Malley Family Fund  
 Aaron Marks Foundation Fund  
 George H. and Constance Wolcott Mason Fund  
 Nick Mayer Memorial Fund  
 Alan and Peggy Mendelson Fund  
 Thomas M. Meredith Fund  
 MISAC Fund

Melissa Joy Molin Memorial Fund	Florence and Charles Rubenstein Family Foundation Fund	Olivia Joy Wentworth Memorial Fund	Bloomfield Greater Together Community Fund	William and Estelle Fraidowitz Family Fund	Thomas H. Lorch and Hollace Peterson Lorch Fund
MorningStar Fund	The Salve! Fund	Peter Wertheim Memorial Fund	Bolton Greater Together Community Fund	David L. Francis and Sarah W. Francis Fund	Jessie F. Lovell Fund No.1
Gerard H. and Marjorie M. Morrissey Fund	Maria Sanchez Fund	Wethersfield Youth Services/ Steven M. Salter Memorial Fund	Boyle Family Fund	Stanley and Jean Frank Fund	Madoff Family Fund in Memory of Emily Madoff
Laird and Ann Mortimer Fund	Savin Family Fund	Whittlesey & Hadley Fund	Newton C. and Elsie B. Brainard Fund	Raymond S. and Agnes M. French Memorial	Marlborough Greater Together Community Fund
Mowell Family Fund	Beth Schiro Fund	Michael and Marjorie Wilder Fund	Donald Brewer Memorial Fund	Anna Sanders Friedman Fund	Manchester Greater Together Community Fund
Diane Lynn Nappier Fund	Schiro Fund	Magrieta L. and Sherwood S. Willard Fund	John W. Buck Fund	Fund for Early Childhood	Gioconda B. McGettigan Fund
Newington High School Class of 1983 Fund	Schonberger September 11 Fund	Jay and Sonja Williams Family Fund	Antonio S. and Sarina Camilleri Memorial Fund	Valyn Gallivan Fund	Francis J. and Agnes C. Muccio Fund
Sean Walter Niland Fund	George A. Scott Memorial Fund	Wilson Family Fund	Canton Greater Together Community Fund	Greater Hartford Architecture Conservancy	Municipal Art Society Fund
Brad and Don Noel Family Fund	Barbara and Ted Sergi Fund	Worthington Family Fund	Carroll Family Fund	Granby Greater Together Community Fund	Daniel W. Murphy Fund
Arwen and George Norman Family Fund	Gregory Shaskan Memorial Fund	Carol and Edward Wrobel Family Fund	Grace D. Cassell Fund	Greater Hartford Architecture Conservancy	Edith W. and John Davis Murphy Fund
Drs. Kola and Trudy Olofinboba Family Fund	Carey Shea and Calvin Parker Fund for Community Development and Economic Justice	Myron Parker Yeomans/Edward Myron Yeomans Family Fund	Catalyst Endowment Fund	Nicholas J. and Doris Giordano Endowment Fund	Leo and Sarah Nadelman Fund
Sharon R. O'Meara Fund	Jean Edward and Mary Beach Shepard Fund	Amiel P. Zak Public Service Fund	CHA Community Fund	Fannie Estelle Hairston Fund	Muriel B. Neall Fund
Orr Family Fund	Sigma Pi Phi Beta Iota Boule Endowment Fund	Connor Scott Zieky Fund	Timothy K. Chartier, MD Fund	Hartford Foundation Staff Fund	D. Robert and Elizabeth Newell Fund
Oz Griebel Fund	Donald and Linda Silpe Fund	Zammitti Family Fund	Connecticut Opera Endowment Fund	Hartford Greater Together Community Fund	Newington Greater Together Community Fund
Edouard L. Paradis Charitable Trust	Stephen M. and Amy Lynn Silverman Family Fund	Zayas Law Fund for Arts and Education	John David Creedon Fund	Marjorie F. Hazen Trust	Glenn Thomas Packard Memorial Fund
The Paisley Fund	Larry Alan Smith Honorary Fund	<b>FIELD OF INTEREST ENDOWED FUNDS</b>	Vinel Edward Dent Memorial Fund	Hebron Greater Together Community Fund	Doris M. Penndorf Literacy Advancement Fund
Paternoster Family Fund	Sovronsky Family Fund	Acacia Zawadi Fund	Teresa and Carmela D'Esopo Fund	HFPG Promotion of Philanthropy Fund	Daniel Clark Perkins Fund
Raymond J. and Elizabeth C. Payne Fund	Anne Stanback and Charlotte Kinlock Fund	Lee and Margot Allison Fund	Dorothea Fund	Astrid and Fred Hanzalek Fund 1	R and C B Foundation
Barton W. Pease Memorial Fund	Sugarman Family Fund	Curtis H. and Katharine G. Alvord Fund	Gladys B. and Robert E. Dunn Fund	Astrid and Fred Hanzalek Fund II	Bruce and Dorothy B. Ralston Field of Interest Fund
Plapler McMahon Family Fund	Summer Arts Festival Endowment Fund	Andover Greater Together Community Fund	Carl J. DuPre Fund	Carol Simpson and Bob Hewey Fund	Emily W. Rankin Fund
Phillips Schreck Family Fund	Louise L. Sutton Fund	Anonymous (CF25) Fund	East Granby Greater Together Community Fund	Alyce F. and David H. Hild Fund	Sali G. Riege Field-of-Interest Fund
JoAnn and James Price Fund for Community Safety	Snyder Family Fund	Anonymous No. 14 Fund	East Hartford Greater Together Community Fund	Isabel Hooker Merritt, Thomas Hooker, and Joseph K. Hooker Trust	Rocky Hill Greater Together Community Fund
Cora Lee Bentley Radcliffe and William Radcliffe Memorial Fund	Thibadeau Family Fund	Anonymous No. 7 Fund	East Windsor Greater Together Community Fund	Howard and Bush Fund for Philanthropy	Vernon D. Roosa and Florence E. Roosa Fund
Dorothy B. Ralston Fund	J and K Thomas Fund	Raymond H. Arnold Fund	Ellington Greater Together Community Fund	Frank Kavitsky Fund No. 1	H. Louise Ruddell Charitable Fund
Belle K. and Irving S. Ribicoff Fund	Westley V. Thompson and Rosemarie E. Thompson Fund	Avon Greater Together Community Fund	Elliot Family Fund	Robert Allan Keeney Memorial Fund	Anna and Abraham I. Savin Fund
The Right Track Fund	Toward a Sustainable Future Fund	JoAnne Bauer and Friends Fund	Enfield Greater Together Community Fund	Ruth Kellogg Fund	Scan-Optics, Inc. Fund
Ritter Family Fund	Town and County Club Fund	Beatman-Cantarow Fund in Memory of Dr. Walter D. Cantarow	The Equality Fund	Muriel R. Kesten Family Fund for Public Education	Ted and Ellen See Fund
Robbins Family Fund	Trees for Bloomfield Fund	Lilly Palmer Biscoe and Eloise Palmer Biscoe Mother/Daughter Fund in Memory of Earl Biscoe, Jr. and Earl Biscoe III	The Equestrianes Fund	Koopman Field of Interest Fund	Natale and Norma Sestero Fund
Betty and Henry Roberts Fund	Trumble Family Fund	Black Giving Circle Fund	Family Service Society Fund	Jeri P. Kostiner Fund	Norma and Natale Sestero Fund I
Vernon D. and Florence E. Roosa Family Foundation Memorial Fund	Tom Tucker Memorial Fund	John E. Blair Fund for the Visually Impaired	Fanny Mag Fassler and Victor Fassler Fund	Latino Endowment Fund	Simsbury Greater Together Community Fund
Samuel Roskin Trust	Alex and Wendy Vance Fund		Farmington Greater Together Community Fund	Mary J. Lee Fund	Slimmon Fund for Arts Education
Ross Memorial Fund	Richard D. Wagner & Madeline/Lina F. Wagner Fund				Somers Greater Together Community Fund
Harold L. and Marilyn Rothstein Fund	Patricia and Charles Walker Family Fund				
Judith L. Rozie-Battle, JD and Stanley F. Battle, PhD Family Fund					

South Windsor Greater Together Community Fund  
 Margaret E. Spellacy Fund  
 The Spencer Turbine Foundation Fund  
 Prasad Srinivasan Family Fund  
 Skip Steiner Fund  
 Edith S. Steinhauser Fund  
 Virginia D. Stoner Fund  
 Suffield Greater Together Community Fund  
 Adelaide L. Thomson Fund  
 A. Lindsay Thomson Fund  
 Emily B. Thomson Fund  
 James McA. Thomson Fund  
 John Talcott Whitman and Louise H. Whitman Fund  
 Tolland Greater Together Community Fund  
 Priscilla M. Usher Fund  
 Vernon Greater Together Community Fund  
 West Hartford Greater Together Community Fund  
 Wethersfield Greater Together Community Fund  
 White Oak Fund  
 Joyce C. Willis Fund  
 Windsor Greater Together Community Fund  
 Windsor Locks Greater Together Community Fund  
 Woman’s Exchange of West Hartford Fund

Memorial Fund  
 William P. and Anne A. Conklin Fund  
 Gladys B. and Robert E. Dunn Fund for Youth Leadership  
 S. Joseph Ferla Fund  
 William S. Fuller Fund  
 Howard Hunt Garmany Fund  
 Gengras Family Fund  
 Charles A. and Cornelia Catlin Gilbert Fund  
 Francis and Mary A. Goodwin Memorial Fund  
 William G. and Mayme J. Green Fund (from Raymond B. Green)  
 Frank C. and Agnes E. Griswold Fund  
 Warren E. and Virginia P. Hayden Trust Fund  
 Charles F. Chase, Helen Bourne Chase & Genevieve Chase Hewes Fund  
 Laura E. Holcomb Fund  
 Tudor F. Holcomb Fund  
 Ellery Hurd Fund  
 Ann M. Jainsen Fund I  
 Oliver F. and Garnette T. Johnson Fund  
 Gladys C. Keeney Trust  
 Walter O. R. Korder Fund  
 Karl C. Kulle Fund  
 Ethel S. Layton Fund  
 Edward B. Lewis, III and Anne H. Lewis Fund  
 William Lidgerwood Fund

**PREFERENCE ENDOWED FUNDS**

Ruth D. Abbott Fund  
 Mildred C. Allison Fund  
 Anonymous Fund  
 Anonymous No. 1 Fund  
 Alfred M. Archer Fund  
 Thomas L. and Dorothy Clark Archibald Fund  
 Katharine Derr Barney Fund  
 Charles S. Bissell Fund  
 Carolyn and Blair Childs

Robert and Mary M. Merritt Fund  
 Miller Family Foundation Fund  
 Roche M. and Jane C. Passero Fund  
 Pomeroy-Brace Fund  
 Charles E. and Mildred Rauch Fund  
 Ray-Andrews Fund in memory of Charles Henry Ray, Julia A. Ray, and James P. Andrews  
 Ruth B. Rouse Fund

Augusta R. Rubin Fund  
 William and Alice Rupp Fund  
 Guy C. and Anne T. Shafer Fund  
 Grace J. F. Smith Fund  
 Herman and Marie Sonnenberg Trust Fund  
 William R. & Mazy Worthington Penrose & Nathalie Penrose Swetland Fund  
 Thomson Family Fund  
 Lillian W. and William B. Welden Fund  
 Mildred E. Whitney Fund  
 Doris E. Wiswell Trust

**COMMUNITY COLLEGE SCHOLARSHIP ENDOWMENT**

*These funds support the Community College Scholarship Endowment:*

Roxanne Cave Scholarship Fund  
 Community College Scholarship Endowment Fund  
 Latino Community College Scholarship Fund  
 Mimi and Brendan Lynch Community College Scholarship Fund  
 June Miller Rosenblatt Community College Scholarship Fund  
 Peggy Miller Community College Scholarship Fund

**GENERAL SCHOLARSHIP ENDOWMENT**

*These funds support the General Scholarship Program:*

AB Club Scholarship Foundation Fund established by John D. Wardlaw  
 Frederick G. Adams Scholarship Fund  
 Alliance Française of Hartford Harpin/Rohinsky Scholarship Fund  
 Barbara Mordarski Bartucca and Peter J. Bartucca Scholarship Fund  
 Leo Bedrick Memorial

Scholarship Fund  
 Maria Gonzalez Borrero Scholarship Fund  
 Philip and Nancy Braender Scholarship Fund  
 W. Philip Braender and Nancy Coleman Braender Scholarship Fund  
 Mathew Caruso Memorial Scholarship Fund  
 Clark Family Fund  
 CohnReznick Scholarship Fund  
 Connecticut Mortgage Bankers Social Affairs Fund  
 Day Pitney LLP Scholarship Fund  
 Drs. Booker T. and Elena L. DeVaughn Scholarship Fund  
 Harry A. Donn Scholarship Fund  
 Lillian C. Donn Scholarship Fund  
 Sonny and Billie Duval Memorial Scholarship Fund  
 Symee Ruth Feinberg Memorial Scholarship Fund  
 Charles, Sophie and Helen Fine Family Fund  
 Stanley D. and Hinda N. Fisher Scholarship Fund  
 Fontana Family Scholarship Fund  
 Janice and Kerry Foster, Sr. Scholarship Fund  
 KJ Foster Scholarship Fund  
 Irving Goldberg Latin Scholar Fund  
 Robert B. and Francine L. Goldfarb Family Scholarship Fund  
 Alan E. Green Hartford Housing Authority Scholarship Fund  
 Fred H. Greenwood Engineering Scholarship Fund  
 Roland S. Harris, Jr. Scholarship Fund  
 Ida L. Hartenberg Charitable Fund  
 Hartford Grammar School Scholarship Fund  
 Hartford Foundation General Scholarship Endowment Fund  
 Nina L. Hartin Memorial Scholarship Fund

The Harugari Lodge of Broad Brook Fund  
 Arman G. and Betty A. Hatsian Scholarship Fund  
 Wendy and Boyd Hinds Memorial Scholarship Fund  
 Gerald and Phyllis Hughes Fund  
 Walter “Doc” Hurley Scholarship Fund for Greater Hartford  
 Jim and Marlene Ibsen Scholarship Fund  
 John C. Ike and Middie Ike Memorial Scholarship Fund  
 The Interracial Scholarship Fund of Greater Hartford  
 Merva Jackson Scholarship Fund  
 James A. Jones Memorial Fund  
 Peter Jung Scholarship Fund  
 Ilene and Marty Kaplan Scholarship Fund  
 Linda J. Kelly Family Scholarship Fund  
 Janice F. and David M. Klein Scholarship Fund  
 Herman P. Kopplemann Fund  
 Rae and Abraham Kopplemann Additional Fund  
 Sylvia H. Koski Scholarship Fund  
 John H. Lewis III Scholarship Fund  
 Noble E. and Emma Belknap Lord Memorial Scholarship Fund  
 Antoinette Shippen Mason Scholarship Fund  
 MassMutual Foundation for Hartford, Inc. Scholarship Fund  
 Meyer-Kimball Memorial Scholarship Fund  
 Rhoda L. Miller Music Scholarship Fund  
 Michael Morrisroe Memorial Scholarship Fund  
 Murtha Cullina LLP Scholarship Fund  
 Alice M. Neenan Memorial Scholarship Fund  
 Vartan K. Omartian and Beatrice Omartian Scholarship Fund

Richard Palmer Scholarship Fund  
 Robert J. Patterson Scholarship Fund  
 Daniel Clark Perkins Fund  
 Pillar Community Development Corporation Scholarship Fund  
 Shyamala Raman Scholarship Fund  
 Dr. Sedrick J. and Alyce T. Rawlins Scholarship Fund  
 Janet B. Rose Memorial Scholarship Fund  
 Bert and Betty Rosen Scholarship Fund  
 June Miller Rosenblatt Scholarship Fund  
 Maxine Rothe Schortman Award  
 Neal R. Seigel Memorial Scholarship Fund  
 Herb Sheintop Memorial Scholarship Fund  
 Sigma Pi Phi Fraternity, Alpha Psi Boule Scholarship Fund  
 Sigma Pi Phi Fraternity, Alpha Psi Boule Scholarship Fund No.2  
 The Stearns Fund  
 George F. Stevens Education Fund  
 Trumble Family Scholarship Fund  
 Dorothy L. and Justin R. Tucker Scholarship Fund  
 Tucker Family Scholarship Fund in Memory of Abraham H. and Fannie K. Tucker, David J. Tucker, Thelma (Tucker) Cooper and Robert P. Tucker  
 Thomas J. Villano Scholarship Fund  
 Jaqhawn “JQ” Walters Memorial Scholarship Fund  
 Josh Wittenberg Memorial Scholarship Fund  
 Elmer Cooke Young-Ethel Taylor Young Scholarship Fund

**INDIVIDUAL SCHOLARSHIP FUNDS**

Joyce and Philip Acquaviva Fund  
 American Marketing Association-Connecticut Chapter, Anna C. Klune Memorial Scholarship Fund  
 Eric Amenabar Memorial Scholarship Fund  
 Brian A. Aselton Memorial Scholarship Fund  
 Shyaam Bachman Memorial Scholarship Fund  
 Bartlett Family Scholarship Fund  
 John Bell and Lawrence Thornton Scholarship Fund  
 Lebbeus F. Bissell Scholarship Fund  
 Bloomfield Scholarship Fund  
 J. Leo Bodo Scholarship Fund  
 Donald and Dorothy Bonelli Puerto Rican Education Fund  
 Bonzagni and Thomas Families Scholarship Fund  
 Ted and Evelyn Bothur Memorial Scholarship Fund  
 Makhi Anthony Buckley Scholarship Fund  
 Laurel M. Cohn Scholarship Fund  
 Patricia L. Coombs Scholarship Fund  
 Phyllis Kosiorek Corder and Roy R. Corder Scholarship Fund  
 Joy V. Decicco College Scholarship Fund  
 Aldo DeDominicis Scholarship Fund  
 Albert T. and Jane N. Dewey Fund  
 Daniel R. DiNardi Memorial Scholarship Fund  
 Farmington UNICO Scholarship Fund  
 Stanley D. Fisher Scholarship Fund  
 Jan H. Fonteyne Memorial Scholarship Fund  
 Financial Planning Association of Connecticut, Inc. Scholarship Fund  
 Ethel Cushing Gardner Fund  
 Glastonbury Memorial Scholarship Fund  
 Drew Charles Goulet Memorial Scholarship Fund  
 Hartford Whalers Booster Club Scholarship Fund  
 Jennifer Hodges Fund  
 Jackson-Batchelder Family Scholarship Fund  
 Samuel Leonard Joseph Memorial Scholarship Fund  
 The Walter S. Kapala Scholarship Trust  
 Barbara Kelco Memorial Scholarship Fund  
 Kristin Kepner and Kimberly Kepner McCahill Memorial Scholarship Fund  
 Ray LaChat Memorial Award Fund  
 Beverly J. Malone Ladizki and David A. Ladizki Scholarship Fund  
 JJ Lindberg Scholarship Fund  
 Dr. Frank and Florence Marino Scholarship Fund  
 The Middlebury Fund  
 Miss Ruth Scholarship Fund  
 Douglas J. Myers Scholarship Fund  
 NSDAR - Marjorie P. Nutt Scholarship Fund  
 Carl P. Palazzotto "P.M.A." Scholarship Fund  
 Sylvia Parkinson Fund  
 Mae Passini and Juliet Anderson Memorial Fund  
 Drs. Nima Patel and Daniel McNaughton Scholarship Fund  
 Dorothy E. Hofmann Pembroke Scholarship Fund  
 Joyce S. Picard Scholarship Fund  
 Dr. Nicholas J. Piergrossi Memorial Scholarship Fund  
 Kenneth R. Pietrasko Memorial Scholarship Fund  
 Pomeroy-Brace Scholarship Fund  
 Dr. Sidney Rafal Memorial Fund  
 Catharine W. Reid Scholarship Fund  
 Ritter Family Scholarship Fund

Roosa Family Scholarship Fund  
 Samuel A. Roth Scholarship Fund  
 Bill and Maxine Schortman Scholarship Fund  
 Seabury Employee Scholarship Fund  
 Deedee Segel-Hartford Courant Internship Fund  
 Aubrey M. Seppa Memorial Scholarship Fund  
 Mari Shinoda Scholarship Fund  
 Linda Starikov Singer Memorial Scholarship Fund  
 South Asian Bar Association Endowed Fund  
 Peter T. Steinwedell Scholarship Fund  
 Joseph S. Sudarsky Memorial Scholarship Fund  
 United Nations Association of Connecticut (For Greater Hartford) Scholarship Fund  
 Julie Veilleux Memorial Scholarship Fund  
 Villano-Clarus Scholarship Fund  
 Harold B. Waldo Fund  
 Ernest C. and Laura B. Saeger Wignall Scholarship Fund  
 Muriel S. and Gordon A. Wilson Scholarship Fund  
 L. Wynne Wister Memorial Scholarship Fund  
 Your Chance Scholarship Fund  
 Amiel P. Zak Scholarship Fund

**UNRESTRICTED ENDOWED FUNDS**

**A**  
 F. Russell Abell Fund  
 Olivia and Frederick Adams Fund  
 John O. and Juanita J. Alden Fund  
 Mrs. Jane C. Allen Fund  
 Richard S. Allen Fund  
 Robert L. and Susan B. Aller Fund  
 Carol Alcorn Fund  
 Morgan Hanlon Alvord and Dorothy Deegan Alvord

Memorial Fund  
 Frank E. Amidon Fund  
 Arthur T. and Barbara L. Anderson Fund  
 Anonymous No. 2 Fund  
 Anonymous No. 3 Fund  
 Anonymous No. 4 Fund  
 Anonymous No. 9 Fund  
 Anonymous No. 12 Fund  
 Anonymous No. 42 Fund  
 Anonymous No. 52 Fund  
 Anonymous (CF01) Fund  
 Anonymous (CF02) Fund  
 Anonymous (CF03) Fund  
 Anonymous (CF04) Fund  
 Anonymous (CF05) Fund  
 Anonymous (CF06) Fund  
 Anonymous (CF08) Fund  
 Anonymous (CF11) Fund  
 Anonymous (CF12) Fund  
 Anonymous (CF13) Fund  
 Anonymous (CF19) Fund  
 Anonymous (CF20) Fund  
 Anonymous (CF21) Fund  
 Anonymous (CF22) Fund  
 Anonymous (CF24) Fund  
 Anonymous (CF27) Fund  
 Anonymous (CF28) Fund  
 Anonymous (CF30) Fund  
 Anonymous (CF32) Fund  
 Anonymous (CF33) Fund  
 Anonymous (CF34) Fund  
 Anonymous (CF35) Fund  
 Nora Anthony Memorial Fund  
 Everett E. Arnold Fund  
 Flora G. Arons Fund  
 Margaret Travis Atwood and William I. Atwood Fund  
 Mrs. Beatrice Fox Auerbach (from her sister, Fannie Fox Samuels) Fund  
**B**  
 J. F. Baker Fund  
 Jacob and Mary Balgley Fund

Robert and Eleanor Balgley Fund  
 Michael R. and Deborah F. Bangser Fund  
 Goodman and Cecelia Banks Memorial Fund  
 Joseph J. and Josephine L. Bardani Fund  
 Alice Barlow Fund  
 Luther I. Barnard Fund  
 D. Newton Barney Family Fund  
 Bertha S. Barrar Fund  
 Marjorie G. Barrett Fund  
 Robert W. and Alice M. Barrett Fund  
 Thomas R. Barrett Fund  
 Clara G. Bartlett Fund  
 Edward B. and Mary Louise Bates Fund  
 Mrs. James G. Batterson Fund  
 Grace R. Beardsley Fund  
 John H. and Eleanor L. Beardsley Fund  
 Roxanne Beardsley Fund  
 Michael C. Beckanstin Fund  
 Mrs. Gladys Goodman Beckanstin Fund  
 Elsie R. and C. Gordon Beckwith Fund II  
 Olivet Beckwith Fund  
 Dorothy Beers Fund  
 Maxwell M. and Ruth R. Belding Fund  
 John R. and Joan K. Berthoud Fund  
 Helen W. Bigelow Fund  
 John E. Blair Fund  
 I. R. and Clara Blumenthal Fund  
 Joan J. and Morton A. Blumenthal Fund  
 George F. Boardman Fund  
 William C. Boardman Fund  
 Borges Family Fund  
 Dorothy Jennings Boyd Fund  
 Janice Boyd Fund  
 Florence B. Brainard Fund  
 Lyman B. and Judith P. Brainerd Fund  
 Neville K. Brecker and Raymond

W. Brecker Memorial Fund  
 Richard M. Brett Fund  
 Rae H. Brewster Fund  
 John and Sondra Brittain Fund  
 Stillman B. and Joan E. Brown Fund  
 Paul R. Buchanan Fund  
 Richard B. Bulkeley Fund  
 Col. William E. A. Bulkeley Fund (From Mrs. Bulkeley)  
 William H. Bulkeley Fund  
 Alexander Bunce Fund  
 Dr. and Mrs. James M. Bunce Fund  
 Clifford and Joan Burdge Fund  
 George L. and Helen C. Burnham Fund  
 Mabel A. Burnham Fund  
 Angie L. Burr Fund  
 Lena A. Burwell Fund  
 Helen W. Bush Fund  
 Robert P. Butler Fund  
 Paul M. Butterworth Fund  
 John Byrne Fund  
**C**  
 John L. Cadwell Trust Fund  
 Marjorie S. Caldwell Fund  
 Laura G. and Paul E. Callanan Fund  
 Thomas F. and Mary A. Cannon Fund  
 George C. Capen and Elizabeth Beach Capen Trust  
 George and Elizabeth Beach Capen Fund  
 Eleanor and Jerome Caplan Fund  
 Robert E. and Anne H. Carroll Fund  
 Cartin Family Foundation Fund  
 John R. Cates Fund  
 Marion H. Chaffee Fund #2  
 Chapman Family Fund  
 Wesley I. Charter Fund  
 Warren D. Chase Fund  
 Pamela Churchill Fund  
 Mabel H. P. Clark Trust No. 1

Anne Hatheway Clarke Fund  
 Ruth S. Cloyes Trust  
 Ralph J. Cocks Fund  
 Mary C. H. Coffin Fund  
 Mary C. Cofran Trust  
 Adam P. and Cynthia F. Cohen Fund  
 Minnie Finesilver Cohn and Meyer Cohn Fund  
 Florence H. and J. Donald Cohon Fund  
 Robert L. and Sara Marcy Cole Fund  
 Elizabeth Jones and H. Bacon Collamore, Jr. Fund  
 Anne A. Conklin Fund  
 Edward K. Conklin Fund  
 Frances F. Connelly Fund  
 Frankie and Bill Connelly Fund  
 Mary Jane Converse Fund  
 John R. Cook Trust  
 Mildred E. Cook Fund  
 Charles P. Cooley, Jr. Fund  
 Patricia L. Coombs Fund  
 Mildred A. Cooper Fund  
 William Sheffield Cowles Fund  
 H. Carl and Ruth Law Cramer Fund  
 Barbara M. Crampton Fund  
 J. Noyes Crary Fund  
 CRE Investors Fund  
 Mary Gay Creedon Fund  
 Wilbur B. and Margaret G. Crimmin Fund  
 Evelyn L. Crosby Fund 1  
 Evelyn L. Crosby Fund II  
 James and Marianne Crowley Fund  
 Lillys Crygier Fund  
 Paul B. and Elsa N. Cullen Fund  
 Peter Culver Fund  
 Joseph W. Cunningham, Jr. Fund  
 Caroline E. Currie Fund  
 Louise Cogswell Cushman Fund

## D

James S. and Lois A. Dailey Fund  
 John Dangas Fund  
 Morton and Dinah Danseyar Family Foundation  
 J. H. Kelso and Edith Brainard Davis Fund  
 John M. K. Davis & Mignon Foerderer Davis Fund I  
 John M. K. Davis & Mignon Foerderer Davis Fund II  
 Raymond H. Deck Family Fund in Memory of Kevin F. Deck  
 Charles W. Deeds Fund  
 Donald K. Deitch Fund  
 Caroline De Lamater Fund  
 V. Edward Dent and Donald Blust Memorial Fund  
 Quentin A. Dewing Fund  
 Walter H. Dickman Fund  
 Alice and Harold Dillon Fund  
 Dorothy Godfrey Dillon Fund in memory of her mother, Nathana P. Godfrey  
 Elizabeth Dimick Fund  
 Lucille A. Diorio Fund  
 Dr. and Mrs. Burwell Dodd Fund  
 Thomas K. Dodd Fund  
 John and Barbara Donahue Fund  
 John and Barbara Donahue Fund II  
 Richard D. Donchian Fund  
 Dornenburg Design Christmas Gift Fund  
 George A. Drieu Fund

## E

Beverly Beach Eaton and Edward C. Eaton, III Fund  
 Bernard and Millie G. Ellovich Fund  
 Arthur C. Ellsworth Fund  
 John E. and Grace Ellsworth Fund  
 Jean Sheldon Elmers Fund  
 Morton and Marilyn Elsner Fund  
 John O. and Harriet Enders Memorial Fund

James F. and Isabelle S. C. English Fund

Joseph R. and Mary P. Ensign Memorial Fund

## F

Guy B. and Rita B. Fallow Fund  
 Victor Fassler Fund  
 Jack B. and Jessie L. Feeny Fund  
 Eleanor Ferguson Fund  
 Filer Fund  
 Gustave Fischer and Lillian A. Fischer Fund  
 Gustave and Lillian A. Fischer Fund  
 Lillian A. Fischer Fund  
 Eugene R. and Sandra Flaxman Fund  
 Grace M. Flynn Fund  
 T. Mitchell Ford Fund  
 Debra and Ed Forand Family Fund  
 Henry D. Fowler Fund  
 Mary M. Fowler Fund  
 Melicent Rawson Fuller Fund

## G

George H. Gabriel Fund  
 D. Stephen and Phyllis K. Gaffney Fund  
 Dr. Edythe and Mr. Albert Gaines Fund  
 Marilda Gándara Fund  
 John S. Garvan Fund  
 Richard and Joanne Gates Fund  
 Gavin Family Fund  
 Donald S. Gershman Family Fund  
 Arthur C. Getchell Fund  
 Raymond A. Gibson Fund  
 E.C. Gilkeson Fund  
 George H. Gilman, Jr. Fund  
 Irving L. Gilman Family Charitable Foundation Fund  
 Rita Ginsberg Fund  
 Miriam E. and Leon H. Glazer Fund #2

William E. and Jacquelyn M. T. Glynn Fund

Godbout Family Foundation Fund  
 Steven and Blanche Goldenberg Family Fund

Arnold and Julian Goldstein Fund  
 Clara M. Goodman Estate Fund

Goodman/Loeb Family Fund  
 Mary A. Goodman Fund

Mary Goodwin Fund  
 Genevieve H. and James L. Goodwin Fund

Richard H. Gordon and the Gordon Family Fund  
 Mildred B. Grady Fund

Louis Graham Fund  
 Pearl M. Grandy Fund

Eugenie and Charles Granniss Fund 1

Eugenie and Charles Granniss Fund 2

Margaret G. Grant Fund

Dorothy Yeomans Grauly Fund  
 Virginia Stuart Gray Fund

William G. Gray Fund

Beverly and Arnold C. Greenberg Fund

Jacob Herman Greenberg Fund

Anna M. Greenspon Memorial Fund (from Charles Greenspon)

Shirley S. Greenspon Fund  
 Elizabeth N. Gregory Fund

Helen Griffith Fund

Jane Z. Griggs Fund

Raymond W. and Cleo C. Grinold Fund

F. Louise Griswold Fund

Cornelia Gross Fund

Robert E. and Barbara W. Groundwater Fund

Robinson A. and Nancy D. Grover Fund

## H

William P. Haas Fund II  
 James and Florence Gertrude Haddow Fund

Jessie J. Haight Fund

Edith S. Hale Fund

Luella C. Hale Fund

Joseph T. Hall Fund

Robert C. Hall Fund

Charles H. Hamlin, M.D. Fund

Carlotta Hammitt Fund

Anna Hammons Fund

Alice A. Harder and Harriett S. Olzendam Fund

Samuel C. Hardin Fund

J. Warren Harper Fund

Marion K. Harris Fund

Dr. Nathan Harris Fund

Harold L. Hart and Ethel B. Hart Foundation Fund

John R. Hart and Pauline Davidson Hart Fund

Hart-Coggeshall Fund

Hartford Foundation  
 General Endowment Fund

Hartman-Newfield  
 Tobacco Company Fund

Virgil L. Hartzog Fund

David M. Hatheway Fund

Elizabeth C. Hatheway Fund

Nathan Haverback Fund

Charles L. Heath Trust

Joyce S. Heckman Fund

Sue W. and Robert C. Hector Fund

Warren C. Heidel Fund

Frances S. Hennessy Fund

Mary B. Hewes Fund

Madelyn C. Hickmott Fund

Elizabeth S. Hicks Fund

Virginia Hicks Fund

Dr. Otto M. Hirschfeld Fund

Earl W. Hodge Fund

Mary G. H. Hoffer Fund

Dwight A. Hogg Fund

Elizabeth Glass Hoke Fund

Benjamin L. Holland Fund

Alice F. Holmes Fund

Margaret E. Honan Fund

H. Mansfield Horner Fund

Latham B. and Elizabeth H. Howard Fund

Barbara A. and Elijah K. Hubbard Fund

Mary A. Huber Fund

Richard L. and Virginia W. Hughes Fund

Charles A. Hunter Trust

Leila C. Hunter Trust

William Hunter Fund

R. Eric and Winifred Hutchinson Family Fund

Elizabeth Huntting Fund

## I

John Avery and Elinor Houghton  
 Bulkeley Ingersoll Fund

## J

Warren E. Jackson and Jewell C. Jackson Fund

Harry Jacobs Fund

Katharine Jacobus Fund

Ann M. Jainsen Fund II

Ann M. Jainsen Fund III

Carl W. and Julia Jainsen Memorial Fund

Wilson and Ann Jainsen Fund

Alexander & Alice C. Jarvis Fund

Dr. and Mrs. H. Gildersleeve Jarvis Fund

Mary Goodrich Jenson Fund

James Jewett Fund

Bertram A. Johnson Fund

Blanche W. Johnson Fund

Claire Q. and Herbert Johnson Fund

Katharine N. Johnson Fund

Lillian A. Johnson Fund  
Mabel Johnson Fund  
Grace D. Joley Fund

## K

Sheldon J. Kahn Fund  
Harry G. and Fannie S.  
Kaminsky Fund  
Ann M. Kane Fund

William Kashman and  
Inez P. Kashman Fund

Veronica K. and John P.  
Kazlau Memorial Fund  
Louise E. Keister Trust  
Linda J. Kelly Family Fund  
Edward H. Kenyon Fund  
Mathilde T. Kingsland Fund  
Eva Kleman Fund  
George Kleman Fund  
Louise J. Klett Fund  
Robert C. Knox, Jr. Fund  
Susan Schiro Kominsky Fund  
Doris and Simon Konover Fund  
Koopman Fund  
Marion L. Kropp Fund  
Theodore C. and Marie J.  
Kyle Fund

## L

The Elizabeth M. Landon and  
Harriette M. Landon Fund  
Doris E. Larson Fund  
Betty and John Larus Fund  
Ethel T. Larus Fund  
H. Warren Lawrence Fund  
Janet S. Legrow Fund  
Sarah W. Leibert Fund  
(from her son, Herbert A.)  
Dorothy H. Leppens Fund  
Robert P. Letendre Fund  
Suzanne M. and George  
Levine Fund  
Frederick Elbert Lewis  
Family Fund  
Robert Lienhard Fund

Boardman F. Lockwood Fund  
Gertrude G. Lofgren Fund  
Bruce and Molly O'Neill  
Louden Fund  
Jessie F. Lovell Fund No. 2  
Jean Allen Day Lowry  
Memorial Fund  
Lawrence J. Lunden Fund  
Lux Bond & Green Fund  
Lyon Fund

## M

Genevieve MacKenzie Fund  
Edward L. and Audrey B.  
Mahl Fund  
Lottie M. Mahl Estate Fund  
Louise A. Mahl Fund  
Morris and Edith Mancoll Fund  
Marks Family Fund  
Alfred G. Mason Fund  
Roy S. Mason Fund  
Sidney J. Mass Fund  
Mary Massa Trust  
Harriet K. Maxwell Fund II  
Alice A. McCurry Fund  
Julia K. McGovern Fund  
Henry R. and Katharine K.  
McLane Fund  
John F. McLaughlin Fund  
Helen L. McManus Estate Fund  
MCW Fund for Women  
and Children  
Helen H. Meade Fund  
Gertrude M. Meller Fund  
Peggy and Alan Mendelson Fund  
Grace O. and Harold A.  
Merriman Fund  
Morrow Family Fund  
Message Center Beepers Fund  
The MGN Fund  
Stephen and Patricia  
Middlebrook Fund II  
Frances Thayer Miller Fund  
Frederick L. Mitchell Fund  
Margaret Sage Mitchell  
Estate Fund

Robert and Adriana  
Mnuchin Fund  
Samuel E. Molod Family Fund  
Caroline V. Moran Memorial Fund  
Paul W. Morency Fund  
Shirley M. and Edward H.  
Morgan Fund II  
Russell C. Morley Fund  
Mr. and Mrs. Gerard H.  
Morrisey Fund  
Mary T. Morton Fund  
W. Howie Muir Fund  
William M. Mulford Fund  
Chester H. Munson Fund  
J. Read and Barbara H.  
Murphy Fund  
Mr. and Mrs. John S.  
Murtha Fund

## N

Reba and Arthur Nassau Fund  
Arlene and Daniel Neiditz Fund  
David H. Neiditz Memorial Fund  
Moses J. and Rachel Neiditz Fund  
Arnold W. Nelson, Barbara O.  
Nelson and June Billingham  
Nelson Fund  
D. Robert and Elizabeth  
Newell Fund  
Jon O. and Martha S.  
Newman Fund  
Seymore and Ann  
Newman Memorial Fund  
Germain D. and Patricia L.  
Newton Fund  
Nutmeg Foundation Fund,  
to honor John M. K. Davis  
Alfred G. Nye Fund

## O

Elisabeth R. Ohde Fund  
Veda Coughlin Oliva Fund  
William J. and Marcia H.  
Olsson Fund

## P

Kathleen Palm and Joseph  
Devine Fund

Bradford E. Parker Fund  
Dorothy E. W. and James R.  
Parker Fund  
Philip Partington Fund  
Wyman G. and  
Virginia Patten Fund  
Pearse Family Fund  
Edwin L. Pearson Fund  
Grace S. Peck Fund  
Edith Chester Pelton Fund  
Brewster B. and Judith  
Perkins Fund  
Col. Harry L. Perkins Fund  
Neil H. Pfanstiel Fund  
Judson T. Sr. and Virginia C.  
Pierson Fund  
Katharine A. Pinney Fund  
Rollin G. Plumb Fund  
Pomeroy Day Fund  
Barbara P. Poppe and Harry B.  
Poppe Memorial Fund  
Kimberly Ann Porter Fund  
William H. Porter Fund  
Barbara B. Preston Fund  
James D. Price Fund  
Clarence L. Prickett Fund  
Herbert J. Prouty Fund  
Millard and Claire Pryor Fund

## R

Dorothy L. Rainford  
Memorial Fund  
Arthur and Ann Randall Fund  
Nancy Taft Rankin Fund  
Edward Raphael, Esther  
and Nathan Kleinman Fund  
(from Minnie K. Raphael)  
Richard B. Redfield  
Memorial Fund  
J. Ronald Regnier Fund  
Joseph F. Reheiser Fund  
Louise F. Reheiser Fund  
I. William Reisman and  
Beatrice W. Reisman Fund  
Julia S. Reynolds Fund  
Harvey B. and Carrie W.  
Riggs Fund  
Gail Ripley Fund

Mabel G. and Agnes Ripley Fund  
The RMB Fund  
Rev. Philip W. Roberts Fund  
Victor and Emma  
Robington Fund  
Caroline and John  
Rohrbach Fund  
Patty Levaour Rome Fund  
Edgar L. Ropkins Fund  
R. Philip and Rebecca C.  
Rose Fund  
Frances F. Ross Fund  
Olive L. Rudolph Fund  
Dorothy Mason Russell Fund  
Peter G. and Betsy Russell Fund  
William C. Russell Fund

## S

Robert Salter, Jr. Fund  
Fan Fox Samuels (from Mr. and  
Mrs. Richard Koopman) Fund  
Fan Fox Samuels (from Mr. and  
Mrs. Bernard Schiro) Fund  
Sappington Schoen Family Fund  
Frank J. and Hilda Saunders Fund  
Arthur and Hope E.  
Scattergood Fund  
Andrew M. Schatz and  
Barbara F. Wolf Fund  
Ruth and Walter Schloss Fund  
Isidore Schnap Fund  
Lodewyk A. and Annie R.  
Schryver Fund  
Sidney Schulman Fund  
Robert H. Schutz, Jr. Fund  
Pauline H. Schwind Fund  
Walter K. Schwinn Fund  
William N. and Virginia C.  
Seery Fund  
Seidman Family Fund  
Lily Selitzky Fund  
Norma and Natale Sestero Fund II  
Thomas A. and Ann Hayes  
Shannon Family Memorial Fund  
Sharpless Family Fund  
Henrietta T. Shaw Fund  
Catherine Sullivan Shay and  
William Desmond Shay Fund

Andrew Roy Sheketoff  
Memorial Fund  
Lewis and Sylvia Sheketoff Fund  
Harry A. Shindler Fund  
Jessie A. Shipman Fund  
Lester E. Shippee Fund  
Debra J. Shulansky Family Fund  
Ralph M. and Ruth K.  
Shulansky Fund  
The Shulansky Foundation Fund  
Joseph L. Shulman Fund  
Georgia H. Silliman Fund  
Rabbi Morris and Althea O.  
Silverman Fund  
Robert Siskin Family Fund  
Siskin Family Fund  
Mollie Slade Fund  
James B. and Julie Hovey  
Slimmon, Jr. Fund I  
Eleanor Carter Sloan Fund  
Kathleen V. and William H.  
Smiley Fund  
Douglas Tracy Smith and  
Dorothy Potter Smith Fund  
Grace Fitts Smith Fund  
Julie E. Smith Fund, in  
memory of her family  
Sarah Conklin Smith Fund  
Winchell Smith Fund  
Smyth Manufacturing  
Company Fund  
Abraham and Lina Solomon Fund  
Philip and Dora Sondik Fund  
Jenny L. Spargo Fund  
Ruth L. Spaulding Fund  
Howard and Mary Alice  
Spencer Fund  
Henry M. and Ilse W.  
Spiegel Fund  
Mary Baker Stanley Fund  
Talcott and Nina Stanley Fund  
Wilbur C. Stauble Fund  
M. V. and Lucinda S. Stempf Fund  
Mary Holden Stephenson Fund  
John W. Steube Fund  
Elizabeth K. Steven Fund  
Edward J. and Marilyn D.  
Stockton Fund

Mr. and Mrs. Lyndes B. Stone Fund  
 Samuel M. Stone Fund  
 Leslie M. Stophel and Douglas J. Myers Fund  
 John D. Stout, Jr. Memorial Fund  
 Matilda and Beatrice Sudarsky Fund  
 Suisman Foundation, Inc. Fund  
 Edward A. and Etta W. Suisman Fund  
 Janet and Michael Suisman Fund - C  
 Janet and Michael Suisman Fund - T  
 Michael and Elsa Daspin Suisman Fund  
 Samuel C. and Helen K. Suisman Memorial Fund  
 Samuel Suisman and Edward A. Suisman Fund  
 Melinda and Paul Sullivan Fund  
 Reynold F. and Sylvia N. Svensk Memorial Fund  
 Doris S. Swift Fund

**T**

Russell P. Taber Fund  
 Nelson Taintor, Jr. and Virginia Taintor Fund  
 Carolyn Talcott Fund  
 Jack D. and Ruth H. Taylor Fund  
 James and Edith D. Taylor Charitable Foundation (In honor of J.M.K. Davis)  
 Mrs. J. Moulton (Antoinette) Thomas Fund  
 Arnold P. and Betty Jeanne Thompson Fund  
 Julia Spencer Thrall Fund  
 Melvin Weisman Title Fund  
 James H. and Hetty B. Torrey Fund  
 Henry P. and Margaret E. Townsend Fund  
 Leonard M. Troub Endowment Fund  
 Joseph P. Trumbull Trust Fund

Charles A. and Ruth H. Tucker Fund  
 George G. Twitchell Fund

**V**

Mrs. Kingsland Van Winkle Fund  
 David, Ellie and Jim Venneman Family Fund  
 Boo, Brett, Martha (Beale), and Wade Vianney Fund  
 Edmond R. and Audrey M. (Svensk) Vianney Fund  
 Bernard S. Vinick Fund  
 Vitamaur Fund

**W**

Wagoner Family Fund  
 Mary E. Q. Walberg Fund  
 Henry H. Walkley Fund  
 Dorothy H. Warner Fund  
 Edgar Francis Waterman Fund  
 Frederick D. and Katherine W. Watkins Family Fund  
 Mr. and Mrs. Stuart Watson Fund  
 Judith A. W. Wawro Fund  
 Helen Lyde Wayne Fund  
 Katharine Howes Wead Fund  
 Arthur E. and Elizabeth H. Webster Trust 1  
 Arthur E. and Elizabeth H. Webster Trust 2  
 Weed Family Fund  
 Oscar Wegman Trust  
 Oscar and Ruby T. Wegman Fund II  
 Fannie and Louis Weinstein Fund (from their daughter, Mrs. Pauline Kopelman)  
 Milton and Frances Weinstein Fund  
 Jacqueline and Frederic Werner Fund  
 Richard G. West Fund  
 Stillman F. Westbrook Fund  
 Edward J. Whalen Fund  
 Mary Pomeroy Wheeler Fund  
 Doris E. Whitbeck Fund  
 Arthur J. White Fund

Charles and Mildred White Fund  
 Edwin and Luann Whitmore Fund  
 Dorothy D. Whitney (Mrs. Howard F.) Fund  
 Gladys and Theodore Wielandt Fund  
 Wilson and Joanne Wilde Fund  
 Frazer B. and Barbara T. Wilde Fund  
 Charlotte E. Wile Fund  
 Edward C. and Mary W. Wilkins Fund  
 Frances Williams Fund  
 Frank O. H. Williams Fund  
 Joan Bergmann Wilson Fund  
 Muriel and Gordon Wilson Fund  
 Katharine S. Winter Fund No. 1  
 Mr. and Mrs. John K. Winter Fund  
 W. Watson Woodford Fund  
 Archibald M. Woodruff, Jr. Fund (given by his wife Barbara B. Woodruff)  
 Charles J. Woods Fund  
 Mary Paine Worthen Fund  
 Catherine Maus Wright Fund  
 Father Paul Wysocki and Family Fund No. 2

**Y**

Clinton B. Yeomans Fund  
 Elsie B. Yeomans Trust

**Z**

Henry M. Zachs and Judith M. Zachs Fund  
 Opal Marie Zimmerman Memorial Fund (from her husband Charles)  
 Joseph Zisk Fund  
 William Zola Memorial Fund

**FOUNDATION LEADERSHIP**

Our legacy is shaped by our community’s leaders. We are grateful to all who have served to move us forward together.

**THE ORIGINAL BOARD**

Charles A. Goodwin 1936-54 | Chair, 1936-54  
 J. M. K. Davis 1936-71 | Chair, 1955-69  
 Earle Dimon 1936-54  
 Mrs. Herbert Fisher 1936-54  
 Spencer Gross 1936-69  
 Henry J. Marks 1936-47  
 Mrs. Bernard T. Williams 1936-48

Lawrence A. Howard 1948-1951  
 Min Jung Kim 2020-21  
 Mark F. Korber 1999-2008  
 Chair, 2005-08  
 Hartzel Z. Lebed 1981-85  
 George Levine 1984-93  
 Dr. Estela R. López 2019-21  
 Bonnie J. Malley 2006-15  
 Thomas M. Malloy 2002-06  
 Albert Marks, Sr. 1947-65

**OTHER BOARD MEMBERS**

Frederick G. Adams 1981-90 | Chair, 1987-90  
 Lucian E. Baldwin 1967-76 | Chair, 1970-75  
 Maxwell M. Belding 1972-81  
 Nancy P. Bernstein 2013-21  
 David M. Borden 2007-16  
 Francisco L. Borges 1999-2009  
 Maria Borrero 1988-91  
 John C. Brittain 1995-99  
 Mrs. Paul Callanan 1955-69  
 William P. Conklin 1956-73  
 Paul Copes 1991-94  
 James A. Crowley 1994-2000  
 George Day 1954-66  
 James F. English, Jr. 1985-96 | Chair, 1991-96  
 Edward J. Forand Jr. 2000-13 | Chair, 2011-13  
 William E. Glynn 1969-83 | Chair, 1979-82  
 Blanche S. Goldenberg 1996-2005  
 Chair, 1999-2002  
 Robert B. Goldfarb 2007-16  
 Delores Graham 1976-80  
 Beverly P. Greenberg 2005-14  
 R. Nelson Griebel 2016-17  
 Miss Cornelia Gross 1970-83  
 Nancy D. Grover 1997-2004  
 Chair, 2003-04  
 Benjamin Holland 1954-61

I. Charles Mathews 2019 - 2020  
 Yvette Meléndez 2005-17 | Chair, 2014-16  
 Stephen B. Middlebrook 1997-2006  
 Thea Montañez 2015  
 Robert K. Mooney 1973-82  
 John S. Murtha 1977-86 | Chair, 1983-86  
 Jon O. Newman 1986-95  
 Elsa M. Núñez 2016-17  
 Lillian Ortiz 2003-05  
 Brewster B. Perkins 1985-98 | Chair, 1997-98  
 Ellen Ash Peters 1997-2001  
 JoAnn H. Price 2010-2019  
 Chair, 2017-2019  
 Nancy T. Rankin 1993-2002  
 John C. Reagan 1983-84  
 Lewis J. Robinson, Jr. 2003-10 | Chair, 2009-10  
 Rosaida Morales Rosario 1991-2002  
 Susan J. Sappington 2009-12  
 Herbert P. Schoen 1982-85  
 Gordon Scott 2016-2018  
 Sue Ann Shay, s.n.d. 1987-96  
 Lester Shippee 1951-56  
 Lyndes B. Stone 1961-75  
 Michael Suisman 1966-79 | Chair, 1976-78  
 Judith S. Wawro 1983-92  
 Wilson Wilde 1987-96

## COMMITTEES

In addition to the members of the Board of Directors, the Hartford Foundation is fortunate to have other volunteers who collectively contribute hundreds of hours of service and advice to help the Foundation in a number of areas. Listed here are the members of the standing subcommittees of the Board of Directors and special committees.

### AUDIT

*Rodney O. Powell, Chair*  
Richard N. Palmer\*

Carl Peterson

Cynthia Steer  
John Wright

### DEVELOPMENT

*Andrew R. Worthington\*, Chair*  
Susan B. Dunn\*  
Theodore S. Sergi\*  
Robert B. Goldfarb  
JoAnn H. Price

### POLICY AND STRATEGY

*Nicole Porter\*, Chair*  
Marlene M. Ibsen\*  
Mark Overmyer-Velázquez\*

Amy Peltier

Carol Peltier  
Debbie Peterson  
Renee Savoie

Ned Steiger

Ann Thomas  
Bob White~  
Kathy Worthington

### EXPEDITED GRANT REVIEW

*Rodney O. Powell, Chair\**  
Susan B. Dunn\*  
Theodore S. Sergi\*

### BRAINARD FUND ADVISORY

*Richard N. Palmer\*, Chair*  
Kenneth R. Alleyne  
Ellen Andrews  
James Cox-Chapman  
Lucy Cox-Chapman Dagneau  
Lynne Garner

### LATINO ENDOWMENT FUND STEERING

*Barbara Fernandez, Chair*  
Aura Alvarado  
Moraima Gutiérrez  
Diana Jepsen  
Evelyn LaFontaine  
Yvette Martas  
Rita Ortiz  
Rosaida Morales Rosario  
Lisa Werkmeister Rozas  
Jacqueline Santiago

### FINANCE AND ADMINISTRATION

*Mark Overmyer-Velázquez\*, Chair*  
Marlene M. Ibsen\*  
David M. Roth\*

### BLACK GIVING CIRCLE FUND STEERING

*Christopher Cloud, Chair*  
Kristen Clark  
Brenda DelGado~  
Nakia Hill  
Katonya Hughey  
Robert Ike  
Bradford Meachum  
Wanda Williams McCormack

### BOARD OF AMBASSADORS

*Andrew R. Worthington\*, Chair*  
Kenneth R. Alleyne  
Amanda Aronson  
Scott Aronson  
Francine Austin  
Malcom F. Barlow  
Stephen Bayer  
Shaun Biggers Alleyne  
Richard Brown  
John F. Byrnes  
Marla J. Byrnes  
Francine Christiansen  
Christopher Cloud  
Adam P. Cohen  
Britt-Marie K. Cole-Johnson  
Eric D. Daniels  
Mishone Donelson  
Tiffany Donelson

### GOVERNANCE

*Richard N. Palmer\*, Chair*  
Rodney O. Powell  
Theodore S. Sergi\*~

### HFPG IMPACT!

*Marlene M. Ibsen\*, Chair*  
Susan B. Dunn\*  
Nicole Porter\*  
Rodney O. Powell\*  
Robert B. Goldfarb  
Alan Mattamana

### CATALYST ENDOWMENT FUND STEERING

*Terry Schmitt, Chair*  
*Amanda Aronson, Vice Chair*  
Iris Bashkin  
Karen Brown  
Francine Christiansen~  
Kathleen Costello~  
Wendy Haller  
Bill McDonald  
Leslie Ohta

### INVESTMENT

*David M. Roth\*, Chair*  
Theodore S. Sergi\*  
Robert B. Goldfarb  
David Holmgren  
David Marks

Earl Exum

Thomas J. Filomeno  
Robert B. Goldfarb  
John Green  
Arnold C. Greenberg  
Rashid Hamid  
Stacy Hurley-Cloud  
Jill J. Hutensky  
Lenworth M. Jacobs  
Edward S. Jason, Jr.  
David R. Jimenez  
Dinesh Kapur  
Rosy Kapur  
Charlotte Kinlock  
Deborah Kleinman  
Steven C. Kleinman  
Evelyn LaFontaine  
Antoinette Lazarus  
Merrill Mandell  
Alan Mattamana  
Adam McLaughlin  
John H. Motley  
Joelle Murchison  
Cheryl A. O'Meara  
Moy N. Ogilvie  
Michele Parrotta  
Brewster B. Perkins  
Tyler Polk  
Sharon Rome Reisner  
Susan Rottner  
Richard Rubenstein  
Andrew M. Schatz  
Shana Schlossberg  
Hy J. Schwartz  
Paula R. Silas Guy  
Anne Stanback  
Cecil J. Thomas  
Dougie Trumble  
Tom R. Trumble  
Ellie W. Venneman  
James R. Venneman  
Fred Ward  
Wyrot Ward  
Nancy Wheeler  
Bob White  
John Wright  
Eric Zachs  
Jessica Zachs

### PROFESSIONAL ADVISORY

*Nicholas M. Sheridan, Chair*  
Patricia R. Beauregard  
Jill H. Clark  
Beth Duffy  
John W. Eckel  
Ruth Fortune  
Crystal Germanese  
Christiana N. Gianopulos  
Suzanne S. Giuffrida  
Austin S. Hersh  
Denis M. Horrigan  
Benjamin Kehl  
Taylor C. King  
Dawn Lazarus  
Ryan V. Leichsenring  
David A. Mangs  
Greg F. Mendoza  
Anna Rothfus Merin  
Andrew Salak  
Peter J. Smith  
Timothy Throckmorton  
Michael Welch

### SCHOLARSHIP

*Includes members of Interview and Selection Committees*

Begum Abadin  
Shirley P. Boron  
Glenn A. Cassis  
Stacy H. Cloud  
Ashley M. Coleman  
Nicholas Criscitelli  
Judith M. Dobai  
Carol Dupuis  
Kimberly Eadie  
Dr. Eileen M. Furey  
Dr. Sam Galloway  
Gregory Grant  
Moraima Gutiérrez  
Kristen Mason Horrigan  
Armando Jimenez  
Harvey Kelly  
David Klein  
Janice Klein  
Step MacGillivray  
Shantel Mallery  
Gayende Martin

Michelle C. Mays  
Dr. Troy A. Monroe  
Susan C. Myers  
Dr. Wilfredo Nieves  
Christine Pandolfe  
Laura A. Schuyler  
Isaiah Torres  
Leah N. Wade  
Tyrone V. Walker  
Trina N. Williams  
Patricia J. Wrice

### INVESTMENT ADVISOR

Michael Miller,  
Crewcial Partners, LLC

### COUNSEL

Robinson & Cole LLP

\* Member of Board of Directors

~ Ex-officio



## BOARD OF DIRECTORS



▲ **Back Row (L-R):** Andrew R. Worthington, Marlene M. Ibsen, Dr. Mark Overmyer-Velázquez, Richard N. Palmer. **Front Row (L-R):** Nicole Porter, Theodore S. Sergi, Rodney O. Powell, David M. Roth. **Not Pictured:** Susan B. Dunn

**THEODORE S. SERGI, Chair**  
Retired President and CEO, The Connecticut Science Center, and Retired Commissioner of Education, State of Connecticut  
*Appointed by the Board of Directors, 2019*

**RODNEY O. POWELL, Vice Chair**  
Retired President, Corporate Citizenship and President, Eversource Foundation  
*Appointed by the Hartford Consortium for Higher Education, 2012*

**MARLENE M. IBSEN, Treasurer**  
Vice President, Community Relations, Travelers, and CEO and President, Travelers Foundation  
*Appointed by the Trustee Banks, 2017*

**SUSAN B. DUNN**  
Trained Interim Director for Nonprofits, Retired President of United Way of Central and Northeastern Connecticut  
*Appointed by the Board Chair, United Way of Central and Northeastern Connecticut, 2021*

**DR. MARK OVERMYER-VELÁZQUEZ**  
Professor of History and Latinx Studies, and University Campus Director, UConn Hartford  
*Appointed by the MetroHartford Alliance Board Chair, 2019*

**RICHARD N. PALMER**  
Retired Associate Justice, Connecticut Supreme Court  
*Appointed by the Chief Justice of the Connecticut Supreme Court, 2016*

**NICOLE PORTER**  
Senior Manager, Social Impact and Partnerships, The LEGO Group  
*Appointed by the Judge of Probate Court, District of Hartford, 2021*

**DAVID M. ROTH**  
Senior Managing Partner, SouthOcean Capital Partners Inc.  
*Appointed by the Board of Directors, 2018*

**ANDREW R. WORTHINGTON**  
Senior Vice President, Wealth Management, Long River Wealth Management, UBS Financial Services, Inc.  
*Appointed by the Board of Directors, 2015*

## OUR STAFF

Our talented and dedicated staff are passionate about Greater Hartford. They are committed to building relationships in the community that can inform and guide their work, and contribute to a shared vision for our future. Reach any of us at 860-548-1888.

### Office of the President

Julie Feidner  
Jay Williams

### Communications and Marketing

Doretta Andonucci  
Bradford Drazen  
Michaela Mendygral  
Chris Senecal  
Abigail Woodhouse  
Tom Zeleznock

### Community Impact

Cesar Aleman  
Willona Y. Amoakoh  
Damion Baker  
Yvette Bello  
Megan Burke  
Kelly Casey

Ashley Coleman  
Erika Frank  
Elysa Gordon  
Karen Hartenstein  
Joel Hicks-Rivera  
Susan Hills  
Betsy Johnson  
Monica Kelly  
Judy McBride  
Madeline Nguyen  
Kate Piotrowski  
Cynthia Sanchez  
Meher Shulman  
Cierra A. Stancil  
Amy Studwell  
Tara Sundie  
Kate Szczerbacki  
Melanie Tavares

### Development

Chari L. Chester  
Anderson  
Francesca Borges  
Gordon  
Sarah E. Carlson  
Susan Dana  
Pam Dawkins Pieper  
Reid DiRenzo  
Betty Ann Grady  
Jennyfer A. Holmes  
Ryan O'Halloran  
Deborah Rothstein  
Susanne M. Seney  
Kayla Rose Thomas  
Kandianna Valiotis  
Sally Weisman

### Finance and Administration

Juana Baribeau  
Michele Beauge  
Tracy Bradley  
Hannah Elias  
Ingrid Fullwood  
Frank Gramuglia  
Andrew Halpryn  
Susan Harmon  
Joe Hurley  
Patrick Laorden  
Bonnie Malley  
Josephine Morrison  
Janis Peyton  
Rebecca Sailor  
Williams

## We are grateful to our former colleagues.



**LOUANN CAMPANELLO** ▶ LouAnn joined the Foundation in 2008 and became Director of Finance in 2016. She drew upon her skills as a CPA and her attention to detail to oversee the Foundation's annual operating budget, financial reporting, and tax and regulatory filings. Since retiring in July 2021, LouAnn has enjoyed spending time with her four grandchildren, attending UConn games and going to the beach.



**DAWN GRANT** ▶ Dawn joined the Foundation in 1997 after moving to Hartford. As Senior Community Impact Officer, Dawn oversaw the Basic Human Needs funding portfolio, supported the Black Giving Circle Fund, and improved various programs. Her caring manner, good humor and extensive knowledge of local nonprofits will be missed as she relocates in 2022.

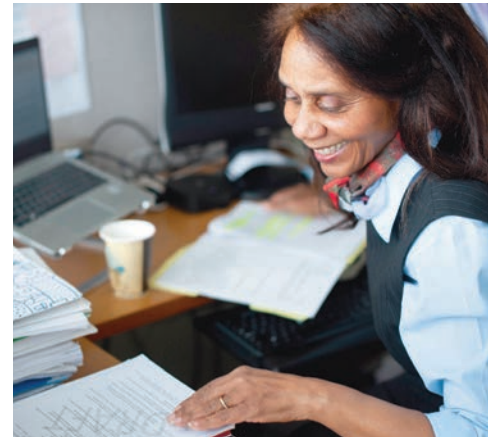
## Our Internal Commitment to Diversity, Equity and Inclusion

The Foundation's effort to address disparities and inequities requires vital internal work.

In 2021, we renewed our commitment to improve our culture and to invite wider staff input on a variety of Foundation initiatives. We have embraced a different approach in recruiting new staff that has led to a more diverse and richer candidate pool for Foundation positions.

Our DEI Advisory Group developed a set of organizational goals and an action plan for 2022. The plan includes staff from every department, engages a Chief Diversity Officer on demand, and embeds DEI into every facet of the Foundation's work.

After two years of working remotely, our team began the transition back into our office in April 2022. ▶



### Special thanks to ▶

The individuals, families and organizations that created new funds in 2021 for sharing their stories.

### Photo Credits ▶

**Cover + page 6:**  
Nick Rezendez Photography

**Inside front cover:**  
Northeast Aerial Imaging

**page 2:** Micaela Levesque

**pages 3, 32, 33, 34, 38, 57, 78, 79, 80, staff headshots:**

Defining Studios

**page 5:**  
Lindaluz Carrillo

**pages 12, 23:**  
Hartford Courant / Mark Mirko

**page 15:**  
Brittany Cooper,  
Norman Oates Photo LLC

**page 28:**  
Connecticut Public

**pages 28, 30:**  
CT Mirror

**page 42:**  
Keith Claytor,  
TimeFrozen Photography

**page 54:**  
RDK Photography

**page 57:**  
Maza Rey Photography



**Hartford  
Foundation**  
FOR PUBLIC GIVING

10 Columbus Boulevard  
8th Floor  
Hartford, CT 06106

NON PROFIT  
ORGANIZATION  
U.S. POSTAGE  
**PAID**  
HARTFORD, CT  
PERMIT NO. 1017

PLEASE MAIL TO

- ▼ The Youth Arts Institute at Charter Oak Cultural Center is constructing new classrooms and gallery space, supported in part by an almost \$250,000 grant from the Foundation in 2021.



**JOIN US** as we work to  
dismantle systemic racism and  
build inclusive opportunity for  
all residents of our region.

The need is great. The time is now.  
We want to hear from you.

**call:** 860-548-1888  
**email:** [joinus@hfpg.org](mailto:joinus@hfpg.org)  
**visit:** [hfpg.org](http://hfpg.org)