

03

Leadership Message

04

Responding to COVID-19

18

Responding to Disparities  
in Our Region

26

Greater Together 2020

28

Giving Circles  
and Scholarship

30

How We Do Our Work

33

2020 At a Glance

34

Finances

36

Investment Returns

38

Action Fund for  
Racial Justice

40

New Funds

56

1925 Society

58

Funds List

71

Our Team

---

Peaceful protests took place in  
Hartford (cover), Glastonbury  
(right), and across the region  
(pp. 2-3) following the murder  
of George Floyd.



# Reverse Psychology: A Year in the Diary of the Disenfranchised

(excerpt from Journal Entry #187)

Routine traffic stop  
doing 65 in a 70  
hands out the window  
open your door  
hands in the air  
get out the car  
get on the ground  
lay on the hood  
get on your knees

routine traffic stop  
thought it was a gun  
thought it was my gun  
it was dark, he was dark  
thought it was my house  
thought he was robbing  
a construction site  
thought her house  
was the right house  
wrong house

he was running  
about to run, breathing  
on his back, no his  
stomach, thought  
he could hold his  
breath for 569 seconds

— Frederick-Douglass  
Knowles II  
Hartford Poet Laureate



**TOGETHER, WE  
ARE SEEKING  
TO BUILD  
LASTING CHANGE  
BY BREAKING  
DOWN SYSTEMS  
OF INEQUITY.**



ENFIELD



GLASTONBURY



HARTFORD

2020 upended and challenged everything we thought about our organization, our work and the way we do it, and our role in the Hartford region. The global COVID-19 pandemic, with its public health and economic crises, was overlaid upon generations of structural and systemic racism in the United States. Together, these dual pandemics created a once-in-a-lifetime calamity, but simultaneously revealed a once-in-a-lifetime opportunity. This forced the United States to draw upon its greatest strengths, while exposing some of our country's most significant weaknesses and failures. At the Hartford Foundation, we would be required to reconcile the same.



As we look back at 2020, we recall the devastating health and economic toll and the long overdue reckoning on race. Yet, we will also remember countless examples of leadership, perseverance, and altruism that occurred throughout those difficult months. The pages that follow document both the acute needs and significant challenges our community faced, as well as the Herculean efforts and unwavering generosity of our nonprofit partners and our selfless donors. Together, we provided support for hundreds of thousands of residents with pandemic-related grants that impacted each of the 29 towns in our region.

We believe that the Hartford Foundation for Public Giving emerges from the confluence of crises a stronger, nimbler, and more impactful organization than we could have ever imagined when we turned the calendar to 2020. We would have never chosen the path that led us here, but we would not trade the results for anything.

We are clearer in speaking about our work to help dismantle structural racism and achieve equity in social and economic mobility, and why we believe it is important. We are leading and inspiring our donors and stakeholders in new ways; yet, we are also being led and inspired by the same. We are learning from, measuring, and evaluating the impact of our work in ways that are meaningful to the communities we serve. Most importantly, we are approaching our charge with a combination of humility, ambition, and commitment; it is a recipe that will undoubtedly carry us through 2021 and beyond.

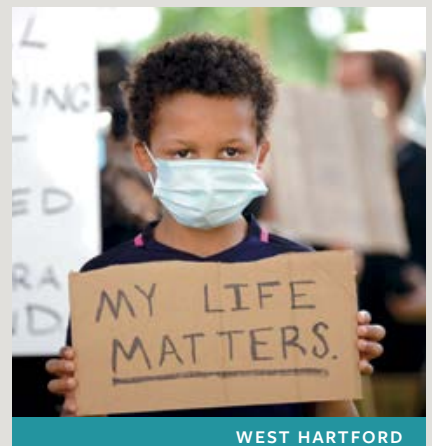
**JAY WILLIAMS** | President   **THEODORE S. SERGI** | Chair, Board of Directors



ROCKY HILL



SOMERS



WEST HARTFORD



# 2020.

## This past year, a new and lethal virus tested the mettle of each of our 29 towns.

Could we mobilize resources in time? Could we protect multiple vulnerable populations during a global pandemic? Could we keep hope alive to rebuild our communities—better than they were before—on the other side of this crisis?

Then, while the country was gripped by constant media updates on the evolving COVID-19 outbreak, a second pandemic that has been percolating in our country for generations became undeniably evident. On May 25, the murder of George Floyd awakened our national consciousness. The call to dismantle racist systems moved to the foreground as people took to the streets in droves—in the midst of a global pandemic—to demand individual and structural accountability in the fight for racial justice.

The following highlights are a look back at the acts of leadership and determination that marked 2020—the year the history books are sure to record as a time when the mechanisms of unity and change became the spirit of our community.

## 20/20.



COVID-19 INTENSIFIED DISPARITIES STATEWIDE

2020



In 2020, **twice as many** Connecticut **Latinx residents** as white residents reported at least one adult in their household **lost their job**.<sup>1</sup>



Although **Black residents** comprise **10% of our state's population**, they accounted for **13% of COVID-19 deaths**.<sup>2</sup>



**55% of Black residents in Connecticut** reported they are just getting by or finding it difficult to get by, compared to **24% of all state residents**.<sup>1</sup>



Nearly **twice as many Black residents** as white residents surveyed in Connecticut indicated that they have **lost a loved one or friend to the Coronavirus**.<sup>1</sup>



2020



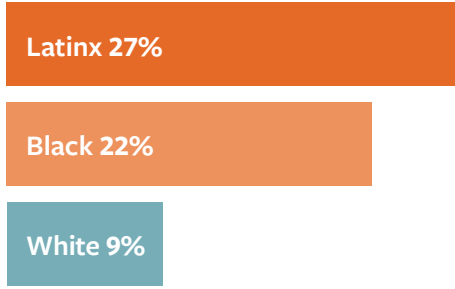
In the past 12 months, the proportion of **Latinx residents in Connecticut** was **three times higher** than white residents indicating they had **not had enough money to provide adequate housing**.<sup>1</sup>



Between February and April of 2020, the number of small business owners declined sharply nationwide. **People of color were disproportionately impacted**.<sup>3</sup>



The proportion of **Black and Latinx** residents in Connecticut reporting food insecurity was about **two and a half times and three times greater** than the proportion of white residents reporting the same experience.<sup>1</sup>





**COVID-19  
INTENSIFIED THE  
URGENCY AND  
VALIDATED THE  
IMPORTANCE OF  
OUR STRATEGIC  
PRIORITIES.**



# COVID-19 RESPONSE FUND

## HIGHLIGHTS

# 260 GRANTS

### PHASE 1: 139 GRANTS TOTALING \$7.8M

Focused on emergency response—**food security** being the most common grant purpose.

March  
17

June  
30

**Fund  
Launched**

**April 6 ▶**  
3 weeks after launch,  
the first grants  
were announced



- ▶ A survey conducted by the **Foodshare** Institute for Hunger Research & Solutions found 70% of people visiting a food bank (including the Rentschler Field site) had never used a food pantry before the COVID-19 crisis.
- ▶ All grantees were offered the option to re-purpose or accelerate payments on existing grants in order to meet immediate needs. As a result, **30 organizations**—including **East Hartford Public Schools**—modified their existing grants totaling more than **\$1.2 million**.

THE FUND RECEIVED CONTRIBUTIONS FROM INDIVIDUALS AND ORGANIZATIONS TOTALING

# \$ 10.7 million

In partnership with the United Way of Central and Northeast Connecticut, we co-convoked the **COVID-19 Community Response Advisory Council**—a group of representatives from nonprofit, business, faith-based, and others sectors with frontline knowledge of our community’s needs.





GRANTS SUPPORTED  
RESIDENTS IN EACH OF OUR  
**29 towns**

DISTRIBUTING MORE THAN  
**\$ 9.6 million**

**PHASE 2: 121 GRANTS TOTALING \$1.8M**

Focus shifted to **keeping staff and clients of nonprofit organizations safe** during reopening.

July  
1

Feb.  
2021



- ▲ **Interval House CT** at the 2020 Walk Against Domestic Violence event organized by the **Hispanic Health Council**.
- ◀ **CT Immigrant & Refugee Coalition** advocate at a rally supporting HUSKY for all immigrants.

These organizations received grants through the COVID-19 Response Fund.

**In 2021, the COVID-19 Response Fund** will focus on collaborative and systemic efforts, including proactive investments such as vaccine outreach and distribution, and reducing inequities due to lost learning.

## Partnering with the City of Hartford, we ensured free and safe learning sites for K-3 students.

Hartford Public Schools adopted a remote learning model as a safety precaution early in the pandemic. This proved to be logistically difficult for working parents and caregivers alike.

The Hartford Foundation helped mitigate the loss of after-school childcare by investing \$400,000 alongside the City of Hartford to develop COVID-19-compliant childcare hubs, strategically located throughout the city for easy access.

The learning hubs served more than 300 Hartford children who were enrolled in hybrid or remote learning, had a working parent or caregiver, and came from a low- to moderate-income family. The free program included breakfast, lunch, and snacks, along with time to play.

### 330 students

5 hubs located in Hartford:

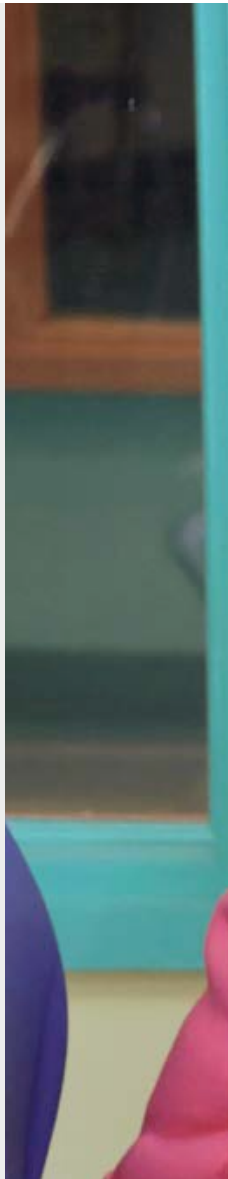
- ▶ Boys and Girls Clubs
- ▶ Catholic Charities
- ▶ Community Renewal Team
- ▶ YMCA of Greater Hartford
- ▶ YWCA Hartford Region

Ariel Chaney, age 7, does her classwork at the Learning Hub hosted by Community Renewal Team in Hartford. ▶



## Harc reimaged how to provide their critical services throughout the pandemic.

Harc knew how important it was to help people stay connected with family and friends during periods of isolation. They continued to offer support through new virtual services, making a significant difference to many.





# RESPONDING QUICKLY TO HELP STABILIZE THE REGION.



Two grants from the Foundation's COVID-19 Response fund totaling \$170,000 were used to supplement lost wages and prepare for the rigors of COVID-19 safety compliance. Harc reinvented how they provided services such as social connections, physical therapy, art therapy, independence building, and music education, then initiated a plan to continue meeting the needs of the 2,000 individuals and families who rely on Harc.



# WORKING IN CONNECTICUT AND ACROSS THE NATION.



## Connecting, convening, and leading beyond our catchment area is critical to the success of breakthrough solutions.

The intertwined pandemics of COVID-19 and systemic racism made clear that what affects one community affects us all. Our ability to fulfill our strategic commitment is expanding as we work with partners across the state and nation.

- ▶ In 2020, we collaborated with the Community Foundation of Greater New Britain for the local manufacturing of more than 20,000 face shields that were distributed to regional hospitals, clinics, and other frontline providers.
- ▶ As a member of the first-ever Aligned Action Network through the Community Foundation Opportunity Network (CFON), we are collaborating with foundations across the country to dismantle systemic racism and achieve equity in social and economic mobility.

- 
- ▶ Front line workers had to manage personal health risks while caring for others. The Hartford Foundation awarded dozens of grants for crucial personal protective equipment (PPE) through its COVID-19 Response Fund.



## We joined forces to help stabilize Hartford’s small businesses.

In partnership with the City of Hartford, Capital For Change, and HEDCO, we launched the Hartford Small Business Emergency Assistance Micro-Grant Program. The \$1.375M program was funded by the Hartford Foundation, the City, Bank of America, and Travelers.

Together, we provided 161 Hartford businesses with an average of \$7,780 of capital assistance; our contribution was earmarked for businesses located in low-income communities owned by people of color and/or women.

### OF THE GRANTS AWARDED (as of August 2020)



went to businesses owned by women



went to businesses owned by people of color



went to businesses in low-income census tracts



GRANTS BY INDUSTRY

- Service | 34%
- Food/Restaurant | 22%
- Contracting/Construction | 14%
- Retail | 13%
- Health | 8%
- Real Estate | 5%
- Other | 4%

Source: City of Hartford, Community & Small Business Development Division



▲ Chantell Kelly, co-owner of Capital Ice Cream, Jhonny Herrera, owner of Green Remodeling, LLC, and Tony Nguyen, owner of ABC Telecom, participated in the Hartford Small Business Emergency Assistance Micro-Grant Program.

# RESILIENCY, IMPACT, AND RELEVANCE.

## Defining our community and our Foundation.

Just three years ago, we vowed to become a more nimble and flexible organization. In 2020, we leaned into those attributes to act decisively and meet the imminent needs of a region devastated by COVID-19 and to advance our racial justice commitment.



## We helped establish the 4-CT Statewide COVID Relief Fund.

Founded by a group of Connecticut-based philanthropists in the early days of the pandemic, 4-CT helped meet the steadily increasing demand for support of nonprofits working on the front lines. The Foundation administered this donor-advised fund and provided critical behind-the-scenes support, such as grant management and fundraising expertise. Other community foundations helped in distributing essential funding to nonprofit agencies across the state. Now a self-sustaining organization, 4-CT continues to provide assistance to Connecticut residents in emergency situations not limited to COVID-19.

### 4-CT FUND HIGHLIGHTS:



**1,625 donors**



**\$ 12.4 million**  
in donations



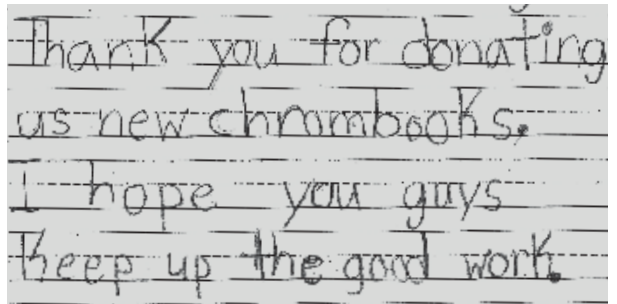
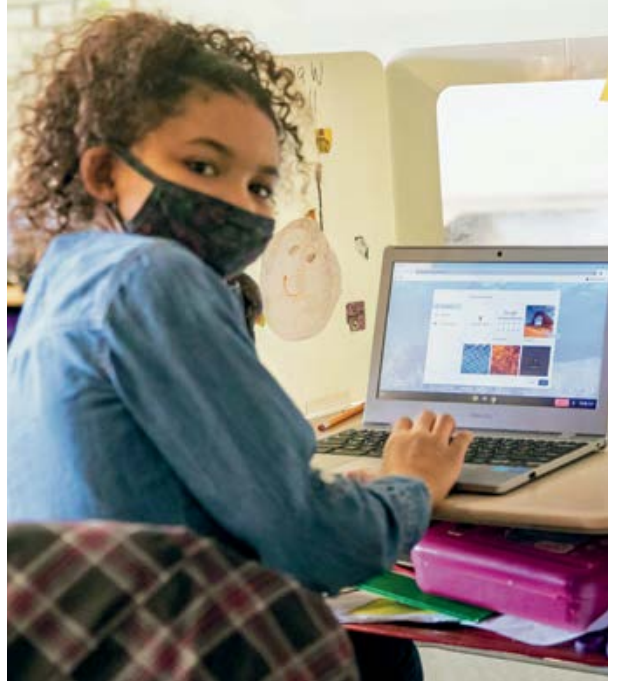
**40 grants**  
statewide

- ▲ Holcomb Farm's Fresh Access program was able to provide fresh produce to more food insecure individuals and distribution partners during COVID-19, thanks in part to a \$15,000 grant from the Hartford Foundation.



## We partnered with LEGO and First Book to mitigate learning loss.

Rapidly enacted statewide COVID-19 policies created inevitable gaps in support, many of which were bridged by leaders in our community. To support students' transition to remote learning, the families of nearly 3,200 K-5 children in six Alliance school districts received new Chromebooks and home Internet connectivity. The \$1M grant was funded by The LEGO Group and The LEGO Foundation and awarded by the Hartford Foundation to First Book, a social enterprise focused on equal access to quality education.



▲ Towns supported: Bloomfield, East Hartford, Manchester, Vernon, Windsor, and Windsor Locks.



# A TIMELY GIFT INSPIRED MANY OTHERS.



Early on in the pandemic, the family of Dorothy and Bernard Schiro made a transformational gift from their parents' donor-advised fund to our [COVID-19 Response Fund](#). That decision catalyzed hundreds of additional donations to support our efforts to address the most acute needs across Greater Hartford. The Schiros are part of the larger Auerbach family who have deep roots in Hartford and contribute generously to nonprofits across the region.





During this time of unprecedented health and economic challenges, we are especially gratified to remember Dorothy and Bernard Schiro's philanthropic spirit and unwavering commitment to Greater Hartford throughout their lifetimes. This concern for their fellow residents and their community was exemplified by their support of a wide range of charities, including soup kitchens and food banks, housing and neighborhood centers, religious and educational institutions, youth centers and programs, summer camps, hospitals, women's shelters, and the arts.

**They were quiet leaders who shared a lifelong love for the people and institutions of Hartford.**

When they recognized a need, they invited community leaders to their home to strategize; they didn't wait to be asked to contribute. Frequently, while out in the community, people approached them to tell personal stories of the difference their gift had made in a time of need.

Dorothy and Bernard Schiro would be so pleased that this gift to the COVID-19 Response Fund has inspired others to give generously to the Foundation.

## Together, we can create meaningful change.

One of the big lessons reinforced by 2020 is the role that philanthropic leadership plays in creating a culture of generosity in Greater Hartford.

The Schiro family's lead gift grew to more than \$10M through donations from more than 250 corporations, individuals, and private foundations, as well as a reallocation of a portion of the Foundation's unrestricted funds.

# OUR OUTCOME AREAS ARE ALIGNED TO RESPOND TO THE INCREASE IN DEMAND FOR ASSISTANCE IN OUR COMMUNITY



**Basic Human Needs:** We support basic human needs in our region, applying an equity lens to the systems and programs that address food and housing, physical and mental health and the digital divide.



**Employment Opportunities:** We seek to increase stable employment opportunities for Black and Latinx adults and youth in our region facing barriers to employment.



**Higher Opportunity Neighborhoods:** We seek to increase the number of Hartford residents living in higher opportunity neighborhoods, as seen through measures including increased availability of quality, affordable housing in Hartford and the region.



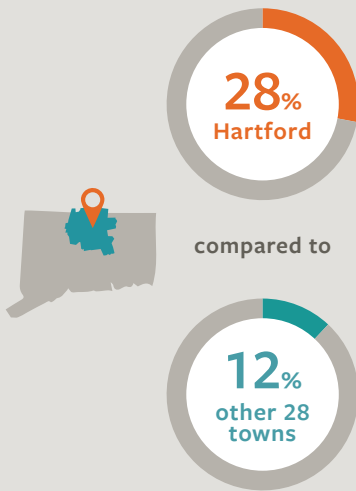
**Civic and Resident Engagement:** We support civic and resident engagement in our region by resourcing resident-led advocacy and organizing efforts and inclusive civic processes.



**Arts and Culture:** We seek to support arts and culture in our region, with a focus on expanding opportunities for people of color, who are underrepresented in Greater Hartford's art workforce.



Households without internet access in the Hartford Foundation's 29-town region (as of 2019)



Source: Connecticut Data Collaborative; U.S. Census American Community Survey (2019)

## Hartford citywide Wi-Fi: A basic human need

With schools and businesses closing and people looking to obtain vital services, access telehealth, and educate their children online, it became clear that internet access has become a Basic Human Need. Wi-Fi has become an essential part of learning, earning, and living; the time had come to bridge the digital divide.

In July 2020, the Hartford Foundation joined with the Dalio Foundation and the City of Hartford to build a free, citywide Wi-Fi network accessible to all residents, students, businesses, and visitors.

The **\$3.8 million project** is being implemented in phases, starting in the Northeast and Frog Hollow neighborhoods.




- ▲ Fourth-grader Sammiyah Thompson, left, and her brother third-grader Nehemiah Thompson work outside in their yard on laptops provided by their school system for distance learning in Hartford.

## Improving Community College Completion Rates

Only one-third of Connecticut students enrolled in a two-year public college complete their education. Many of these students come from low-income families and /or identify as Black or Latinx.

In September, the Foundation called for proposals to improve completion rates as well as post-graduation employment rates for students currently enrolled in associate degree or certificate programs in the Hartford region. The result was five grants, totaling nearly \$235,000; all five initiatives leverage a variety of supports such as access to technology, peer monitoring, and microgrants or stipends. Collectively, the programs will support 350 students in Greater Hartford and 200 Second Chance Pell students incarcerated in the Enfield area. Trinity College will measure program outcomes to inform future grantmaking.



Antonie Osbourne was about 20 credits shy of finishing his associate degree in January 2020. He earned his high school diploma while behind bars and then took some college classes when he was incarcerated in 2002. ▶

## Engaging At-Risk Youth through Employment and Education

The Foundation awarded \$750,000 to Our Piece of the Pie (OPP), which administers the Hartford Youth Service Corps in collaboration with the City of Hartford as well as state and local community partners.

The program was created by Mayor Luke Bronin in 2016 to reengage at-risk or disconnected youth in their education and employment.

The program uses integrated service learning projects and wrap-around supports to serve 230 residents ages 16 to 24. The projects visibly impact Hartford neighborhoods while providing youth with job skills and wages.



## Support for Returning Citizens

Launched in 2016, Capital Workforce Partners' BEST Chance Program helps citizens returning from incarceration prepare for work and reduce their likelihood of returning to prison.

These residents often face systemic racism. BEST Chance is a partnership of local workforce development, education, and service organizations helping individuals secure substance abuse and mental health counseling that may be needed, as well as job readiness skills, industry credentials, and employment.

**In 2020, the Foundation continued its support of this evidence-based program by approving a grant of \$300,000.**

A portion of the grant will be distributed to the Connecticut NAACP as part of its One Million Jobs Campaign to secure employment for people formerly incarcerated.

## Initiative for a Competitive Inner City

Many urban small business owners lack equal access to capital and vital coaching. To support Hartford's small businesses, Inner City Capital Connections brought their Initiative for a Competitive Inner City (ICIC) program to Hartford for the second consecutive year, thanks to a \$325,000 grant from the Foundation.

After the pandemic began, ICIC removed its revenue requirement and converted to online programming. Several businesses from the 2019 cohort returned to learn how to run their business virtually. Participants worked with coaches to tackle specific practical challenges and strengthen their business plans. Going forward, participants can tap into the Inner-City Alumni Network, comprised of successful inner-city companies from across the country.



## Educating and Organizing Residents on Housing Segregation and Inclusive Housing Development

In September, the Foundation issued a call for grant applications designed to engage, educate, and organize Greater Hartford residents on issues of housing segregation and pathways to more inclusive development.

In December, the Foundation awarded four grants totaling \$70,000 to support projects that include education and training, local organizing, canvassing, and social media promotion. They represent a mix of work in urban and suburban communities as well as a balance between larger initiatives providing education regionally and smaller organizations directly led by residents.

By supporting resident education on the history of segregation policies and their impacts, paired with a public policy agenda, the Hartford Foundation seeks to promote a more inclusive and sustainable future for the region.

## Connecticut Institute for Youth and Police Relations in the Hartford Region

2020 made clear the need to address a long history of mistrust between police and communities of color.

**GRANTEES INCLUDE:**

**RPA**  
Regional Plan Association

**SUMMER OF SOLUTIONS**  
6-1-19-19-19

**Sustainable CT**  
Local Actions. Statewide Impact.™

*Let's*  
**TALK** citizen education  
social justice  
environmental action  
truth in action with love + kindness

Josh Serrano is a Section 8 voucher holder who lives in the North End of Hartford with his son. ▶

In June, the Foundation and the Travelers Championship provided a two-year grant to the University of New Haven's Center for Advanced Policing and Tow Youth Justice Institute to launch the Connecticut Institute for Youth and Police Relations. The Institute will provide training to selected police officers in Greater Hartford to help



## Helping to Prevent Homelessness during COVID-19

The COVID-19 pandemic has left thousands of Greater Hartford residents unemployed and unable to pay their rent, with communities of color and those living in urban centers affected most often.

The COVID Homeless Prevention and Diversion Program, a statewide program administered in the Greater Hartford region by **Journey Home**, seeks to help people before they lose their homes.

**The Foundation's \$300,000 grant supplements Department of Housing funding for rental assistance to provide the legal and case management supports that are critical to stabilizing the most vulnerable families.**

The program collaborates across local nonprofits to screen individuals for evidence-based factors related to homelessness and to target resources to reduce the impact on the homeless system.

them balance the demands of public safety and the best interests of youth and diverse communities. Training focuses on changing approaches to real life situations with de-escalation and restorative justice techniques. The grant also funds community listening sessions and surveys to gather resident perspectives on police/community relations

and ideas to improve policing practices, led by Central Connecticut State University's Institute for Municipal and Regional Policy.

A final report will support the Police Transparency and Accountability Task Force of the Connecticut General Assembly's Judiciary Committee.

# GET OUT THE VOTE. GET OUT THE COUNT.

The decennial U.S. Census and the presidential election made 2020 a crucial year for engaging all residents, particularly those in underserved communities.

2020 was the third year the Foundation called for proposals under its Civic Engagement project. Projects focused on underrepresented residents in hard-to-count areas in Hartford and inner ring suburbs, including mobilizing youth for

census completion. Despite the challenges that COVID presented, more than 20 grantees continued to engage with the community, contributing to Connecticut's ranking among the best-counted states in the nation, with a 99.9% enumeration rate. The Foundation lifted up the work of our nonprofit partners through local print, social media, and television advertising in both English and Spanish.

- ▲ A resident drops an absentee ballot into a box outside West Hartford Town Hall.

## Greater Together

COMMUNITY FUNDS



The Hartford Foundation continued to engage local communities and progressed toward grantmaking through our Greater Together Community Funds. The diversity and inclusion component of the program, combined with 2020's broader reckoning on race, has led to a series of in-depth discussions on diversity, equity and inclusion within town advisory committees.

As of this writing, 23 of the 29 towns have established advisory committees which are actively working to get grant dollars into their communities, and four towns have announced grant awards.





## Artists of Color Unite!, a Hartford Foundation Advisory Committee

In May, the Foundation convened an advisory group to lift up and influence resource allocation for artists of color in the region. They closed out 2020 by recommending three grants totaling \$400,000 to support artists of color through COVID-19 relief payments, artistic projects, and ongoing capacity building.

- ▶ **Hartford Performs** used a grant of \$50,000 to provide payments to 90 artists of color who lost wages as a result of the COVID-19 pandemic.
  - ▶ Hartford-based **Free Center** is developing a \$150,000 collaborative award program to support projects by artists of color.
  - ▶ **224 EcoSpace** will manage an incubator project, allocating \$200,000 across ten fellowships, master teaching seminars, and pitches for future support.
- 
- ▶ Sixteen local artists and many volunteers joined together to create Hartford’s Black Lives Matter mural in July.

### Committee Members:

Rashawn Asberry (Pup)

Pedro Bermudez

Dr. Reverend Shelley Best

Olusanya Bey

Jeanika Browne-Springer

Andres Chapparo

Carlos Hernández Chávez

Richard Hollant

Leslie Frances Manselle

Cin Martinez

Marta Morales

Ricardo Reyes

Lael Marie Saez

Yolande Spears

Joe Young



## Greater Together 2020: Join Our Journey

In November, more than one thousand people joined us online and via playback for our annual event, *Greater Together 2020*. The virtual evening included highlights of the Hartford Foundation's work in 2020 with a focus on how the COVID-19 pandemic and the growing call for racial justice inspired us to sharpen the focus of our work. The event featured original compositions from two local musicians, and we showcased several Hartford area teen artists through our *Art in Action* initiative.

The highlight of the evening was a frank conversation with actress and activist Gabrielle Union on race, gender, and the road to equity, moderated by Foundation board member and UConn-Hartford Campus Director, Dr. Mark Overmyer-Velázquez. (Clips of the event are available on our website.)

At the end of the event, everyone was invited to join us online and take the Equity Pledge. In a matter of 24 hours, 250 people logged on and took the pledge. ▶ [hfgp.org/pledge](https://hfgp.org/pledge)





◀ **opposite page:** Gabrielle Union (lower left) joined in a conversation with Dr. Mark Overmyer-Velázquez (upper right) after having met with local young artists, including Pulkit Nagpal of Rocky Hill (lower right).

▲ **on this page:** Zachary Wallace from the Focus Center for Autism in Canton (top) and Brianna Valentine of Bloomfield (bottom) contributed to *Art in Action: Young Artists' Vision of 2020*. President Jay Williams (right) spoke about the Foundation's commitment to lifting up voices of color.

## Empowering Greater Hartford's Black and Latinx Communities

We are embracing the importance of seeing the communities we serve as equal partners, giving over power to others to become the heroes of their own stories.

At *Greater Together*, the Foundation announced a combined **\$2.5 million in grants to dismantle structural racism** and establish more equitable opportunities for Greater Hartford's Black and Latinx communities.

- ▶ **The Hispanic Federation - Connecticut**, a Latino nonprofit membership organization, and **The Prosperity Foundation**, a Black-led philanthropic organization in our state, will each receive \$1 million to execute grantmaking and capacity building in the Hartford region.
- ▶ **The Black Giving Circle Fund and the Latino Endowment Fund** at the Foundation will receive an additional \$50,000 per year for five years to increase their current grantmaking or contribute to their endowments to increase their future capacity.





Black  
Giving  
Circle Fund

## Celebrating five years of philanthropy



To commemorate its fifth anniversary, the Black Giving Circle Fund hosted nearly 400 guests for an online event, **20/20 Vision: Black Philanthropy in Social Justice**.

Nikole Hannah-Jones, Pulitzer Prize-winning reporter for The New York Times Magazine and creator of the landmark 1619 Project, and LaTosha Brown, co-founder of Black Voters Matter, a national organization focused on increasing voter registration and turnout in the Black community, joined in a memorable conversation moderated by Dr. Jeff Ogbar, professor of history at the University of Connecticut. (Clips of the evening are available on our website.)

On the heels of this dynamic event, the members of the giving circle voted to award two significant grants in 2020:

- ▶ **Gardner's House** provides the "Empowering Black Cancer Survivors" program, a compassionate cancer care and patient advocacy program for 25 Black women in Greater Hartford.
- ▶ **Wealth Generation Legacy Inc.** offers the "Personal Finance Does Matter" program, a 10-week, high school and young adult financial literacy education curriculum for 90 Black youth (aged 14-25) in Greater Hartford.

### In Memory of Joyce Willis



Joyce C. Willis was determined to leave a lasting legacy in the community she loved. She was a founding member of the Black Giving Circle, the Amistad Center for Art & Culture, and the Reynolds Family Scholarship Fund Committee, in addition to serving on numerous nonprofit boards and committees. We at the Hartford Foundation will be forever grateful for having known her.



In celebration of Hispanic Heritage Month, the Latino Endowment Fund hosted a virtual conversation on healing, resilience, and equity with Dr. Maysa Akbar, PhD, ABPP, founder of Integrated Wellness Group and author of *Urban Trauma: A Legacy of Racism*.

Many undocumented residents faced eviction, food insecurity, and inaccessible health care early in 2020. In response, the Latino Endowment Fund awarded a one-year, \$20,000 grant to **Connecticut Students for a Dream** for its COVID Community Defense Project. The project trains undocumented young people to lead COVID Defense Workshops, helping peers learn about their rights and strategies to effectively interact with law enforcement, landlords, and employers.



Catalyst Endowment Fund members awarded grants to three nonprofit organizations that empower young women and girls of color.

**The Center for Children's Advocacy** will hire a producer to work with juvenile justice system-involved girls to develop a video about how past traumas impacted their lives. The video will be used in training juvenile court judges, probation offices, and other staff.

**Girls for Technology's** "Building the Next Generation of Youth Entrepreneurs" will prepare high school seniors for entrepreneurship.

**Charter Oak Boxing Academy** will partner with mentors to help at-risk girls of color to engage in healthy relationships and lifestyles, better resolve conflicts, and develop effective coping strategies.



## Changing Students' Lives

In 2020, the Foundation awarded \$1.75M in **scholarships** to nearly 700 students attending two- and four-year colleges and graduate programs. Generous donors established seven new scholarship funds.

We also awarded \$255,000 to **Hartford Promise** for general operating support, student scholarships, and support to students facing additional hurdles due to COVID-19.

◀ From our 2019 reception

## Our foundation is deeply engaged in the Greater Hartford community. Here are some of the ways we contribute to positive change in the region:

### Community Leadership

The Hartford Foundation aims to dismantle structural racism and improve social and economic mobility for Black and Latinx residents and other people of color in Greater Hartford through an array of partnerships.

We view this work as urgent, and therefore, we have chosen to take a greater leadership role and use all the tools at our disposal to help achieve our desired outcomes. Recent examples include the COVID-19 Response Fund and COVID Community Response Advisory Council, the \$2.5 million of grants to Black- and Latinx-led philanthropic organizations announced at Greater Together, and our new Faith Community Grants program.



- ▲ Megan Burke, Director of Community Impact Grantmaking, explains the importance of including people with diverse backgrounds when building Greater Together Community Funds advisory committees.

### Grantmaking and Investments

Since 1925, thousands of donors have entrusted their gifts to the Foundation to distribute to projects, organizations, and collaborations that show promise of reducing the greater disparities in our region.

Our understanding of the community's needs is shaped by requests from nonprofits and by our own assessment of regional priorities. This means our grantmaking is responsive to changing community needs and opportunities while addressing systemic issues that affect the well-being of the entire Greater Hartford region. Informed by best practices, our grantmaking investments support substantial and sustainable community change.



- ▲ Make the Road Connecticut received \$25,000 from the COVID-19 Response Fund to help provide basic human needs for immigrants in Greater Hartford and to cover costs of reopening their office safely.



## Strategic Learning and Evaluation

The Hartford Foundation’s Strategic Learning and Evaluation activities inform action on our five Outcome Areas. For example:

- ▶ The Foundation commissioned a review of how to combat **chronic school absenteeism**. Findings include factors that keep young people out of school, successful interventions, and how grantmaking can support educational engagement. We are using and sharing the report to inform grantmaking, capacity building, and community conversations.
- ▶ The Foundation commissioned a **wealth-building strategy development plan** to build the knowledge among our staff and partners and to provide recommendations on how the Foundation can best contribute to reducing the region’s racial/ethnic wealth gap. Components include a literature review, an inventory of Foundation investments, and a local landscape scan.

## Public Policy

The Hartford Foundation recognizes the power of public policy. By engaging in a broad range of activities guided by our mission and values, our grantmaking can be more far-reaching, sustainable, and responsive. The Foundation’s public policy activities include sharing data and research to better inform public policy decisions, convening diverse voices around a particular issue, forming strategic relationships, and lobbying.

Foundation President Jay Williams serves on several state-wide boards including Governor Lamont’s Workforce Council and AdvanceCT. The Foundation networks with national funders that can invest in Connecticut and with national experts who are knowledgeable about effective policy and practice.



- ▲ Before the pandemic, the Foundation hosted a broad range of in-person conversations. These will resume in the coming months when it is safe to do so.



- ▲ Foundation President Jay Williams committed nearly \$1M of financial support to the state’s census outreach efforts from the Hartford Foundation and other community foundations (October 2019). Connecticut reached a 99% enumeration rate by the end of the census period.

## HFPG Impact! Greater Hartford

HFPG Impact! is designed to catalyze community and economic development in ways that lift up all residents and maximize the region's inclusive economic growth and quality of life.

As a wholly-owned subsidiary, HFPG Impact! puts a greater portion of the Foundation's assets to work. It provides the Foundation extensive flexibility to make investments beyond the scope and range of the Foundation's traditional grantmaking. The Foundation envisions that HFPG Impact! can bring "patient capital" to areas that traditional capital tends to overlook.



## Nonprofit Capacity Building

The Hartford Foundation seeks to increase the stability, effectiveness, and resilience of nonprofits and nonprofit leaders to meet both mission and community needs. For more than four decades, the Hartford Foundation's Nonprofit Support Program has been working to strengthen nonprofits in Greater Hartford.

In 2020, the Foundation expanded the capacity of the **Nonprofit Revolving Loan Fund** (managed by HEDCO) with a capital infusion of \$900K. The Fund quickly deployed loans to an additional 20 organizations, increasing the total number of nonprofits served to 53, with total loan commitments of more than \$2.8M.



The Foundation successfully launched a partnership with **Catchafire**, a skills-based volunteer matching project, connecting professionals who want to donate time with organizations that need their skills. These nonprofits are aligned with the Foundation's five outcome areas.

### Partnership Highlights (through April 2021)

**200** local nonprofits

**247** projects

**4,016** hours donated

**\$ 781,404** value of services



## 2020 ▶ AT A GLANCE

### TOTAL ASSETS

**\$ 1.125 billion**

### CONTRIBUTIONS

**\$ 26.7 million**

### FUNDS

**40 new funds**

**1,394 TOTAL NAMED FUNDS**

### INVESTMENT RETURNS

**8%** in the Corporate Portfolio  
and **12.4%** in the Trust Portfolio.

### GRANTS

**\$ 52.7 million**

**\$849 MILLION SINCE 1925**

### WHERE THE DOLLARS WERE SPENT

**GRANTS\*** \$ 52,695,316

**ADMINISTRATIVE**  
(operating costs) \$ 8,240,032

**RELATED PROGRAM**  
**ACTIVITIES** \$ 2,507,329

### THE HARTFORD FOUNDATION WAS

**founded in 1925**

### OUR MISSION:

We put philanthropy into action to create lasting solutions that result in vibrant communities within the Greater Hartford region.

### WE PROUDLY SERVE GREATER HARTFORD:

- ▶ Andover
- ▶ Avon
- ▶ Bloomfield
- ▶ Bolton
- ▶ Canton
- ▶ East Granby
- ▶ East Hartford
- ▶ East Windsor
- ▶ Ellington
- ▶ Enfield
- ▶ Farmington
- ▶ Glastonbury
- ▶ Granby
- ▶ Hartford
- ▶ Hebron
- ▶ Manchester
- ▶ Marlborough
- ▶ Newington
- ▶ Rocky Hill
- ▶ Simsbury
- ▶ Somers
- ▶ South Windsor
- ▶ Suffield
- ▶ Tolland
- ▶ Vernon
- ▶ West Hartford
- ▶ Wethersfield
- ▶ Windsor
- ▶ Windsor Locks

\*Does not include grants from agency endowments.

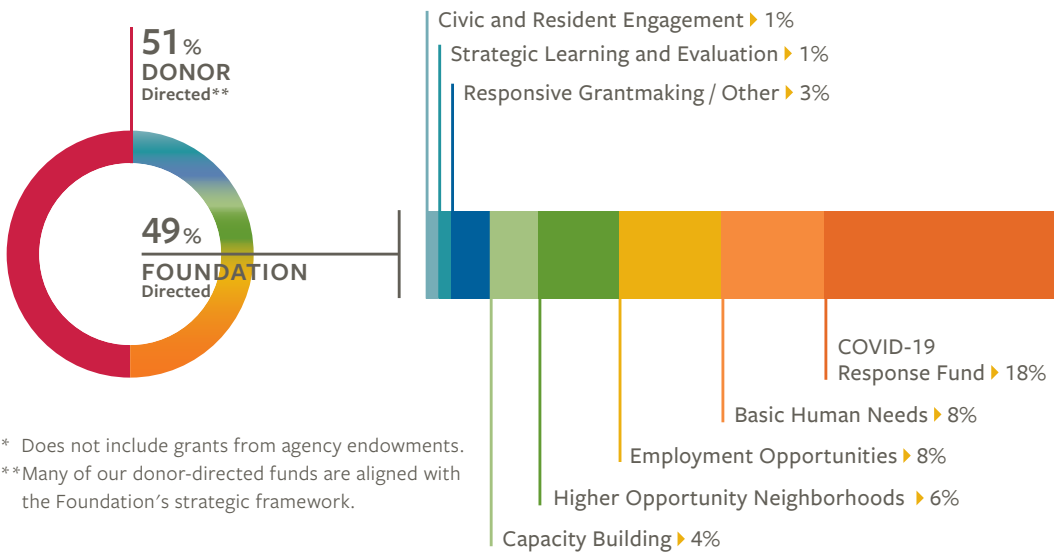


## GRANTMAKING & ENDOWMENT 2020

The Hartford Foundation expanded its impact in 2020, awarding a record-breaking \$52.7 million to a broad base of nonprofit organizations that serve education, families, the arts, housing, health, and more.

### GRANTS BY OUTCOME AREA ▶ How 2020 Grants Were Directed

TOTAL GRANTS\* ▶ \$ 52,695,316 | INDIVIDUAL GRANTS ▶ 3,516



### ENDOWMENT BY FUND TYPE ▶ as of December 31, 2020

Our carefully managed endowment guarantees the endurance of our resources and the progress it supports. We balance risk and return, growth and spending so we can protect tomorrow's assets while addressing today's needs.



SUMMARY OF FINANCES	2020	2019
<b>ASSETS</b>		
Investments	1,107,779,990	1,045,286,557
Other Assets	17,326,031	17,942,210
Total Assets	1,125,106,021	1,063,228,767
<b>LIABILITIES AND NET ASSETS</b>		
Grants and Other Payables	20,499,024	25,350,061
Other Liabilities	15,307,482	13,824,143
Net Assets	1,089,299,515	1,024,054,563
Total Liabilities and Net Assets	1,125,106,021	1,063,228,767
<b>REVENUES</b>		
Contributions	26,726,704	14,052,928
Other Revenue (Loss)	1,251,784	1,125,378
Total Revenues	27,978,488	15,178,306
<b>GRANTS AND EXPENSES</b>		
Grants*	52,695,316	38,299,168
Program Support and Foundation-administered Projects	2,507,329	3,669,908
Operating Expenses	8,240,032	8,241,447
Total Grants and Expenses	63,442,677	50,210,523
<b>TOTAL INVESTMENT RETURN</b>	100,709,141	167,530,987
<b>TOTAL ASSETS</b>		
Beginning of Year	1,063,228,767	933,276,490
End of Year	1,125,106,021	1,063,228,767

\* Does not include grants from agency endowments.

For a complete copy of the audited report of the Hartford Foundation's 2020 finances, or for a copy of our tax return (IRS Form 990), visit [hfgp.org/audit](https://hfgp.org/audit) or contact the Finance department at 860-548-1888.

## INVESTMENT RETURNS

The Hartford Foundation’s assets are managed by its corporate affiliate, HFG, Inc. (the “Corporate Portfolio”) and by the Hartford Foundation Trust (the “Trust Portfolio”).

Northern Trust serves as the custodian of the Corporate Portfolio. Crewcial Partners LLC serves as the Foundation’s investment advisor. Funds are commingled for investment purposes and are invested in a diversified manner with external professional investment managers selected by the Foundation’s Investment Committee at the recommendation of Crewcial Partners.

Bank of America, N.A. acts as the Trustee of the component trusts which are held in a common fund. The Trustee has sole authority to invest in a diversified portfolio with external professional investment managers (which may include Bank of America, N.A. or its investment affiliates, if any) chosen on a competitive basis. NEPC, LLC of Boston, Massachusetts, serves as investment consultant to the Trust. (The other trustee bank, which holds accounts for the Foundation, is Key Bank.)



**INVESTMENT COMMITTEE** ▶ During 2020, the Investment Committee met virtually, (A list of committee members is included in our Committee section on page 72.)

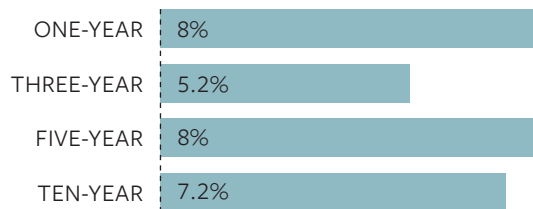


The investment performance\* of the Foundation's broadly diversified endowment portfolios for periods ended December 31, 2020 are as follows:

### CORPORATE PORTFOLIO

(HFGP, Inc.)

\$469.4 MM\*\*



### TRUST PORTFOLIO

(Trustee Bank)

\$630.9 MM\*\*



\* These annualized investment returns are net of investment management fees. | \*\* Rounded to the nearest \$100,000. Past performance is no guarantee of future results.

### How have the Hartford Foundation's investments performed?

The onset of the global pandemic had a profound effect on asset valuations in the first few months of 2020. From February 19 through March 23, the S&P 500 lost more than a third of its value, the fastest bear market in its history. On April 20, oil futures prices traded below zero for the first time in history. In response to these and other market gyrations and the pandemic-related economic shutdown, central banks and governments intervened with massive monetary and fiscal stimulus to ease the pain. These actions, followed in November by the announcement of safe and effective vaccines, resulted in a significant rise in equity prices, which resulted in positive portfolio returns for the entire year. Against this backdrop, the Foundation's broadly-diversified Corporate portfolio posted a net-of-fee investment gain of 8% while the Trust portfolio returned 12.4%, underperforming their customized target benchmarks by 4.2% and 0.3%, respectively.

### How does investment performance help to provide grants to the community?

The Foundation's spending policy and investment strategy are designed to work together to provide a predictable stream of dollars for annual grantmaking to the region's nonprofits while also prioritizing the preservation of the inflation-adjusted value of the funds in the endowment so the impact of future grantmaking can be as effective as it is today. Since its inception in September 1996, the Corporate portfolio has returned an average 7.5% per year, net of investment management fees. Over the same time period, the average net return for the Trust portfolio has been 7.4% per year. The return of the Corporate portfolio has met the CPI+5% target of 7.5% per year since inception, while the Trust has lagged by .1%. The future performance of global equity markets is expected to have a significant influence on progress toward this goal.

► For our full 2020 Endowment Investment Annual Report, visit [hfgp.org/publications](https://hfgp.org/publications)



# ACTION IS THE PATH TO LASTING CHANGE.



**2020 MADE ONE TRUTH CLEAR:**  
Dismantling structural racism requires a long-term commitment.  
**The time to act is now.**

**The Action Fund for Racial Justice** works to disrupt existing systemic racism and achieve equity in social and economic mobility in Greater Hartford.

Dollars raised through this fund will enhance our immediate ability to support nonprofits in our community through grantmaking as we sharpen our long-term commitment to racial justice.

When you give to the Fund, your dollars will be used to address our community's greatest needs, or you can direct your donation toward racial justice work in one or several of our strategic outcome areas.

## DONATE ONLINE:

[hfpg.org/actionfund](https://hfpg.org/actionfund)

**TO LEARN MORE,** contact  
**Deborah Rothstein,**  
*Vice President for Development*  
860-548-1888 x1019  
[drothstein@hfpg.org](mailto:drothstein@hfpg.org)

**ACT!ON** FOR  
**FUND** RACIAL  
JUSTICE

## TYPES OF FUNDS

The Hartford Foundation for Public Giving offers a wide range of options for those who want to create or contribute to a fund. Donors can choose the type of fund that best suits their particular circumstances, goals for giving, and desire for involvement.

---

- ▶ **Unrestricted Funds** address a broad range of local needs. Donors entrust the Foundation to use the fund's income for grants that respond to the community's changing needs.
  - ▶ **Field of Interest Funds** are designed by the donor to accomplish a broad charitable goal or purpose, such as improving health care, elementary education, or the region's cultural life. Donors direct the Foundation to target funds to this topic or cause, focusing dollars on the most promising organizations working in the field at any given time.
  - ▶ **Donor-Advised Funds** are created by donors who wish to remain actively involved with grantmaking. Donors may recommend specific grants to their favorite charity; they may also consult with Foundation staff for guidance on effective grantmaking in their area(s) of interest.
  - ▶ **Designated Funds** are created by donors who wish to specify one or more organizations to receive all or a percentage of the income from the fund annually. The Foundation carries out the donor's directions, ensuring that the named agency receives the income to achieve its charitable purposes.
  - ▶ **Individual Scholarship Funds** are created by donors to help area students afford a college education. Donors can create a named fund with specific selection criteria and may participate in the selection process.
  - ▶ **The General Scholarship Endowment Fund** combines contributions, of any amount, and invests them in order to generate income that funds the Foundation's four-year scholarship program for high school students in the region. Cumulative donations of \$10,000 or more may be built up to establish a named award.
  - ▶ **The Community College Scholarship Fund** combines contributions of any amount and invests them to generate income that funds the Foundation's community college scholarship program for high school or GED program graduates in the region.
- 
- A \$10,000 minimum contribution is needed to establish any fund (except an Individual Scholarship Fund, which requires a \$50,000 contribution).



## NEW FUNDS

The Hartford Foundation is proud to partner with the many individuals, families, and organizations who created new funds in 2020.

---

### **BROTHER CARL HARDRICK INSTITUTE FOR VIOLENCE PREVENTION FUND**

#### *Donor-Advised Fund*

For most of his 70+ years, Brother Carl Hardrick has battled gang violence one child at a time, and has shared his methods with peers across the country. “He’s always been there ... for young people who are in distress,” stopping violence from escalating and connecting youth with needed support services, said Andrew Woods, executive director of Hartford Communities that Care, Inc. Andrew has worked with Brother Carl for more than 20 years, partnering with the City of Hartford and the City’s hospitals as early adopters of hospital-based violence intervention programs.

The Fund was seeded by JoAnn Price, former Board Chair of the Hartford Foundation and co-founder of Fairview Capital Partners, Inc. Grants from the Fund will support training and certifying violence prevention professionals and coordinating impact data relating to issues of gang and gun violence.

“It will be a national model,” says JoAnn, “a reliable resource for evidence-based violence intervention work, and an opportunity to do something significant.” Through the Institute, she added, the community will be able to “get in close and look at what we can do to change the dynamic ... Everyone has really come together.”



The Brother Carl Hardrick Institute for Violence Prevention is a collaboration among donors, the Community Safety Coalition, the Jewish Federation of Greater Hartford, local hospitals, Hartford Communities that Care, and other local organizations. The Jewish Federation and its Jewish Community Relations Council have been working to reduce gun violence in the region for years, said Stephen Bayer, who co-chairs the Institute with JoAnn. The Fund will help create sustainable resources the Institute can use to “build a bench” of residents who are prepared to do this work.



## CT HUMANE SOCIETY ENDOWMENT FUND

### *Designated Endowment Fund*

In February 2020, the Connecticut Humane Society (CHS) opened a designated endowment fund at the Hartford Foundation to build the financial resources to continue the work that began 140 years ago, when Hartford High senior Gertrude O. Lewis founded the Society. Since CHS is not a part of any national groups or government organizations, donors make lifesaving care possible for local pets in need.

The Newington location—a bright, roomy building that’s redefining what it means to be an “animal shelter”—has a donor-subsidized veterinary hospital called Fox Memorial Clinic, a shelter medical department, a Pet Food Pantry, large spaces for cats, dogs, and small animals, individual rooms where prospective pet parents can meet the pets, recovery rooms (even a maternity ward for the cats), and outdoor space for dogs to run and play. Animals come from owner surrenders, animal control, other rescue groups, and from overburdened partner shelters in other states, when resources allow. At CHS, they heal pets

of all ages—both behaviorally and medically—to set them up for success and healthy lives with their families. “We have bandwidth,” said Barbara Naugle, the director of development.

COVID-19 caused some bumps in the road, but CHS found new ways to deliver support services, provide medical care to owned and shelter pets, distribute pet food to the community, offer humane education to students, and adopt pets into new homes. The clinic began focusing on the most urgent cases, rescheduling routine exams temporarily. “Every case they had was serious and life-threatening,” said Barbara. Together, staff, volunteers, donors, and the community ensured that pets in need continued getting the care they deserve. In 2020, CHS placed 1,391 pets in new homes, and kept thousands of owned pets with their families by serving them at the Fox Memorial Clinic and pop-up wellness clinics. New programs include crisis fostering and training modules to prepare pets—and their people—for the eventual return to pre-COVID schedules.

## BUSINESS DONOR-ADVISED FUNDS



### FAIRVIEW ALL IN FUND

*Business Donor-Advised Fund*

When the COVID-19 pandemic hit last year, the entire staff at Fairview Capital Partners Inc. in West Hartford wanted to reach out to the community and the organizations they already supported with more immediate funding. JoAnn Price, co-founder and managing partner of the second-largest Black-owned private equity firm in the country, didn't have to look very far. She spent 10 years on the board of the Hartford Foundation, the last three as Chair, and saw firsthand the positive impact corporate philanthropy could have on a community. The Fairview staff also appreciated the power of the Foundation's reach and the credibility it has earned through its collaborations throughout the Greater Hartford community. Every Fairview staff member has participated in the Fund, and they plan to continue their efforts. "It has given them a different perspective," she said, and made the staff aware of organizations that are not part of their day-to-day lives. "It makes the company better. It makes people better." When you are in a position to make a difference, you have to lean in, JoAnn said. "You've got to have the heart."

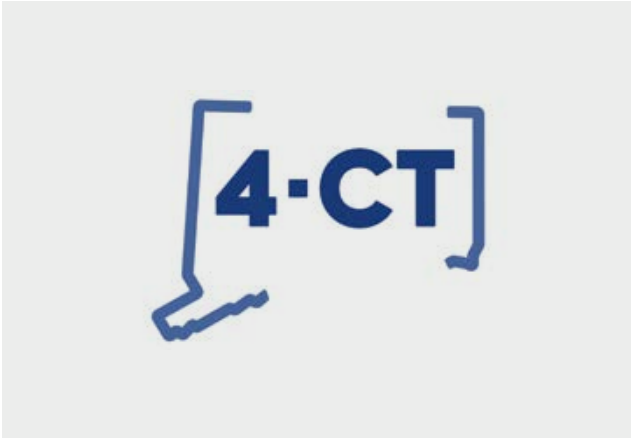


### ZAYAS LAW FUND FOR ARTS AND EDUCATION

*Business Donor-Advised Fund*

The Zayas Law Fund for Arts and Education will support youth activities involving the visual and performing arts: painting, sculpture, music, theater, literature, and innovation in the creative and cultural sectors. The Fund will focus on youth from low-income families in urban areas in greater Hartford, Bridgeport, and New Haven. Attorney Richard Zayas, founder of the Zayas Law Firm, created the Fund based on his own interest in the arts—specifically Caribbean music, which is his greatest passion after practicing law. "We are inspired by the opportunities and joy that music and art education and experiences provide to all young musicians and artists, their families, and their communities," said Zayas. "We are grateful for the opportunity to partner with the Hartford Foundation as we seek to support youth in their pursuit of art and music education and experiences by eliminating financial barriers that may exist."





### 4-CT STATEWIDE COVID-19 RELIEF FUND

#### *Donor-Advised Fund*

Before most people understood the magnitude of COVID-19, a group of local philanthropists came together to establish the Connecticut COVID-19 Charity Connection (4-CT) to support the state's nonprofits. The group launched the 4-CT Statewide COVID-19 Relief Fund, administered by the Hartford Foundation in collaboration with Fairfield County's Community Foundation and The Community Foundation for Greater New Haven. Since March 2020, the Fund has received more than 1,660 donations, ranging from \$1 to \$2,000,000, from people across the country. Grant recipients include the Connecticut Coalition to End Homelessness, Inc., the Connecticut Coalition Against Domestic Violence, the Diaper Bank of Connecticut, Community Health Center Association of Connecticut, The Salvation Army, and the United Way of Central and Northeastern Connecticut.



### CAROL ALCORN FUND AND CHILDS/ALCORN FUND

#### *Unrestricted Fund/Designated Endowed Fund*

Blair Childs, a long-time supporter of the Hartford Foundation, died in October 2020. He was active in Suffield, serving both as an elected official and as a volunteer. His wife Carol, who died in 1999, was also active in Suffield and worked in the Hartford Public Schools for 30 years. Their son, Chris, said both of his parents were passionate about supporting education and their community. The Childs/Alcorn Fund will support Loomis Chaffee and Suffield Academy; Carol (a Loomis family descendant) and her daughter attended Chaffee School and her sons went to Suffield. The Carol Alcorn Fund will be used to support programs and projects that address the region's most pressing needs. The family plans to continue to contribute to these funds, Chris said, as he and his brother and sister have continued with the family's tradition of public service. "Education can never be funded enough," he added.



### BEENA FUND

*Designated Endowment Fund*

Beena is the phonetic spelling of a Hebrew word that means understanding, and is the name a Hartford mother gave her daughter. Beena lives at the Jewish Association for Community Living, one of four organizations—along with Chabad House of Connecticut Inc., Friendship Circle of Greater Hartford, and HARC Inc.—that will receive grants from the Beena Fund. All the organizations serve the intellectually disabled or teach Jewish tradition. “She just makes people happy to be around her ... Her purpose on this Earth is to disseminate love,” she said of her daughter Beena. “She’s in a place ... where she won’t fall through the cracks.” The Fund is her *thank you*, a legacy for and from Beena that the organizations can use however they choose. “They know their needs better than I ever will,” she said. By donating IRA assets, she avoids taxes and makes a difference.



### BLOOMFIELD SCHOLARSHIP FUND

*Donor-Advised Fund*

Local residents started the Bloomfield Citizens Scholarship in the 1960s. Dolph Becker volunteered to run the scholarship in the 1980s. When he decided to retire last year, the decision was made to move the Scholarship to the Hartford Foundation to safeguard it for future generations. Becker calls his four decades of running the program a labor of love. “The nicest thing is every now and then I get a letter from a scholarship recipient,” telling him how the scholarship helped and inspired them. “Education is all-important.”

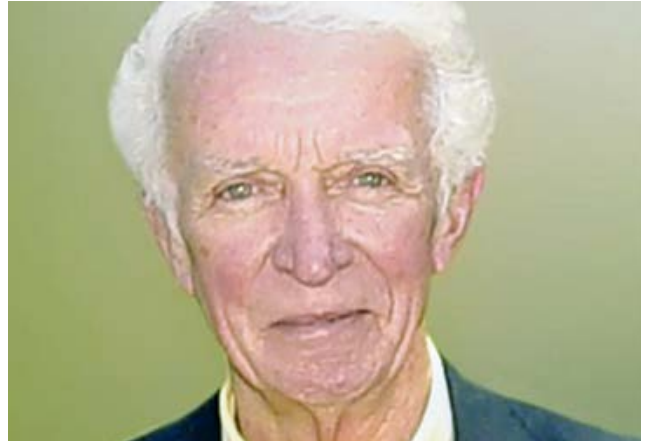
The needs of today’s students are far greater than they were when Dolph started out, and there is not enough money to meet those needs. This scholarship is for Bloomfield residents graduating from a public, private, or parochial high school who have shown a high level of academic performance.



### **BUHLER FAMILY FUND**

#### *Donor-Advised Fund*

Christine and David Buhler have been loyal donors to a number of local organizations over the years. In 2020, they created a donor-advised fund to provide funding for the many causes they care about, and the Glastonbury couple has already identified at least one area of focus. “Riverfront Recapture is an organization that has engaged our whole family,” Christine said. She wasn’t exaggerating. One of their sons discovered his love for crew at Riverfront Recapture; now the whole family participates in the program to varying degrees. “We witnessed first-hand how meaningful and impactful the rowing program was—not only to our son, but also to his peers,” said Christine. “It inspired us to get involved, and we’re so glad we did. It’s truly changed our lives for the better.” The couple also plans to support the organization that introduced Rowan, their Anatolian Shepherd, into their family. “When we were asked to foster Row, we knew she had already found her forever home with us.” Of course, other areas of focus may arise as their lives continue to evolve, said David, who owns and operates Aegis Information Systems in Rocky Hill.



### **CARROLL FAMILY FUND**

#### *Field of Interest Fund*

James J. Carroll of West Hartford created this field of interest fund by bequest after he died in April 2020. Additional gifts in his memory came from family members, friends, and his wife, Margaret T. Carroll. The Fund will support environmental education in grades K-12 and conservation. Jim, an avid fly fisherman, was in international sales for what became The Dexter Corporation in Windsor Locks and traveled to some of the most environmentally stressed places in the world. “There’s no better way to get tuned into the environment than to be a fisherman,” Margaret said.

When Jim retired, he got involved with the Connecticut River Salmon Association, which filled a place in his life that he couldn’t while working. “I don’t want to predict what the Hartford area will need 100 years from now,” she said. “The Foundation staff knows what the needs are.”





**ROBERT E. AND ANNE H.  
CARROLL FUND**

*Unrestricted Fund*

Robert and Anne Carroll were an active West Hartford couple who traveled widely throughout their lives. Anne, who passed away in 2017, was a physical education teacher and coach, and long-time volunteer at Hartford Hospital. Bob, a World War II Naval officer in the Pacific, was an engineer who joined the Connecticut startup company that would become the international sealant business Loctite. He was a leader at the YMCA of Greater Hartford, and served as president and a board member of the American School for the Deaf.

Son Robert Carroll described his father as very generous, and very organized. “He cares about what he believes in,” he said. Bob and Anne included the Hartford Foundation in their estate plans. When Bob passed away in February 2020, their legacy created the Robert E. and Anne H. Carroll Fund, an unrestricted fund that will contribute to improving the quality of life for residents in the Greater Hartford region.

---

**CHA COMMUNITY FUND**

*Field of Interest Fund*

For more than 20 years, the Community Health Association of Vernon provided members of a 19-town region with a voice on the board of the Visiting Nurse and Health Services of Connecticut, a 100-year-old nonprofit that had become a part of the Eastern Connecticut Health Network. Four years ago, a for-profit company bought ECHN. CHA, which provided half of the board members for the Visiting Nurses, agreed to the sale on the condition it be kept going for three years. They wanted to show the buyer the Visiting Nurse could stand on its own and keep serving the community, said Marianne Fisher, president of CHA. But CHA had one piece of business left to manage—it had funds on hand. CHA never directly funded VNHSC and it had no employees. Its leaders reached out to the Hartford Foundation when they realized how difficult it was to locate an agency that fit CHA’s purpose of home-health service and community-based medical assistance. The Foundation will manage this field of interest fund, directing grants of \$15,000 a year for nine years, with a final grant of the remainder in the tenth year. Fisher said they chose to spend down the Fund in order to provide an annual grant large enough to make an impact. As we have found in 2020, she said, “Home care is more important than ever.”



### **D. STEPHEN AND PHYLLIS K. GAFFNEY FUND AND THE ARC OF FARMINGTON VALLEY ENDOWMENT FUND**

*Unrestricted Fund/Designated Endowment Fund*

Stephen and Phyllis Gaffney's daughters learned from their parents to give back to their community. "They just always kind of stepped forward to do small things, things for the community," daughter Allison Skinner said of her parents. "It always made us proud ... They gave big and small." Phyllis passed away in 2016; Judge Gaffney—who served as an Avon probate judge for nearly 30 years—died last June. Through his estate, he set up two funds. One is an unrestricted fund that will be used to meet the most pressing needs of the Greater Hartford community. The other is a designated endowment fund for The ARC of Farmington Valley, known as FAVARH, a nonprofit in Canton serving people with intellectual or developmental disabilities. The Gaffney's daughter, Heather, has lived at FAVARH for many years, and previously participated in day programs. "Dad was eternally grateful for what FAVARH did. She grew so much ... [her] independence was so expanded," Allison said; the Fund was his way of saying thank you.



### **GREATER HARTFORD CHAPTER AGO FUND AND MARJORIE JOLIDON FUND**

*Agency Fund/Donor-Advised Fund*

Two funds established at the Foundation demonstrate how a generous donor, dedicated leadership, and creative thinking can come together to secure the future for an organization and the people it serves. Marjorie Jolidon was a Hartford native who earned bachelor's and master's degrees in music from New York University. An organist, she taught music to high school students in Suffield and Bloomfield. When she died in 2012, she left a bequest to the Greater Hartford Chapter, American Guild of Organists. The local chapter worked with the Foundation to establish two charitable funds that will carry out Ms. Jolidon's legacy and ensure the future of the organization. The COVID-19 pandemic hit the performing arts particularly hard and organists have lost positions playing in concerts, churches, and even funerals. "The part-time musician positions were just wiped away," said Vaughn Mauren, the chapter's former dean. In response, the organization established a COVID relief fund for Hartford area organists while continuing to sponsor private organ lessons and innovative programming. They will continue to be conservative with the funds and look for new ways to fundraise and support programs.



### HALL HIGH SCHOOL FUND FOR THE COMMON GOOD

*Designated Endowment Fund*

When the pandemic disrupted the 60-year reunion plans of West Hartford’s Hall High School Class of 1960, it did not get in the way of 11 determined classmates who renewed their friendships via Zoom. This disparate group, who had purpose-driven careers of all stripes, were “forged by social stresses, racial issues, deficiencies in elected officials—times a lot like today,” Bob Forrester, a member of the Class of ’60, said. The original 11 (now 35) quickly jelled and agreed when one suggested that—in a year when events further exposed gross disparities in American lives—they should be doing something to help. The Fund is being supported by an ever-growing group of classmates and will award a grant each year to Hall High School for student-led philanthropy projects. “This is money meant to provide opportunity,” Forrester said, and it will challenge the students to collaborate and come up with a theme, fundraise, develop the programs, and decide what to support.



### JOHN C. IKE AND MIDDIE IKE MEMORIAL SCHOLARSHIP FUND

*General Scholarship Endowed Fund*

Bloomfield resident Robert Ike chose the name of his new scholarship fund to honor his parents, who encouraged him through his years at Morehouse College and Yale Divinity School. Neither parent was able to finish college—his father lost a football scholarship after an injury his freshman year and instead joined the military; his mother left school after two years to join him. Robert grew up in Windsor attending predominantly white schools and the Metropolitan AME Zion Church in Hartford, where the expectation was that members would attend college. At Morehouse, he found an oasis where he was challenged and surrounded by other men of color, and where it was possible to be academically strong. “I just want to help somebody,” Robert said. Through this renewable scholarship award for high school seniors attending four-year colleges, he is also answering a question he heard at Morehouse: “What have you done to uplift the community?”





**BEVERLY J. MALONE LADIZKI AND  
DAVID A. LADIZKI FUND AND BEVERLY J.  
MALONE LADIZKI AND DAVID A. LADIZKI  
SCHOLARSHIP FUND**

*Donor-Advised Fund/Scholarship Fund*

Beverly Ladizki was an active, generous, thoughtful member of her community, first growing up in Agawam, Mass., and later in Suffield, Conn. Beverly volunteered for her church and the diocese, the Eastern States Exposition, and the Suffield Senior Center. She worked hard and believed that helping others is a moral obligation, affirming her positive outlook toward life and her faith.

In remembrance of Beverly, who passed away in May 2020, her husband, David A. Ladizki, established a donor-advised fund and a scholarship at the Hartford Foundation. He chose the Foundation because of its long track record and ability to grow the Funds in perpetuity.

“It is important that Beverly’s name carry on,” said Ladizki. “Everybody that met her loved her and considered her an angel.”



**JOHN B. LARSON HEALTHCARE  
WORKER NOURISHMENT FUND**

*Donor-Advised Fund*

In his private life and as a local, state, and federal elected official, John B. Larson has always been committed to the region’s first responders and health care workers. Last year, the East Hartford native’s campaign honored this commitment by opening a fund dedicated to providing much-needed support for local nonprofit organizations to supply meals to health care workers.

The John B. Larson Healthcare Worker Nourishment Fund made grants to organizations providing on-the-job sustenance to health care workers treating and caring for people impacted by the COVID-19 pandemic at healthcare facilities in Connecticut’s First Congressional District. Facilities included hospitals in Hartford, Manchester, and Bristol, and organizations such as the VA Connecticut Healthcare System, The Village for Families & Children, Inc., Oak Hill, Community Health Resources, Inc., and Charter Oak Health Center.



### VIRGINIA GRACE LOOMIS MEMORIAL FUND FOR LITERACY AND LITERATURE

*Donor-Advised Fund*

A St. Louis native, Virginia Grace Loomis found a home in the Hartford region when she married James Lee Loomis, Jr., in 1936; they raised their four children in Canton. Her daughter, Florida resident Virginia Parker, approached the Foundation to establish a fund “in recognition and admiration” of her mother, who died in 2007. “She was an intelligent, wise, and empathetic woman. I can’t stand to think she could fade from memory.” Mrs. Loomis wrote beautifully and thoughtfully, and her letters were treasured. “The artful use of language brought a great deal of pleasure to her,” her daughter said, “and she recognized that good writing skills are a huge asset.” As a volunteer English as a Second language teacher, Virginia Parker knows the inability to express oneself in writing and speech can hinder opportunity for success, particularly in higher education. “For anyone, regardless of nationality, poor communication skills are a hurdle,” she said. Mrs. Parker will use her fund to help break down that barrier, and to encourage aspiring writers.



### MICHAEL MORRISROE MEMORIAL SCHOLARSHIP FUND

*General Scholarship Endowed Fund*

For Paul and Elizabeth Morrisroe, the scholarship they established is a way to pay forward the kindness they received after their premature son, Michael, died in their arms in 2004. “People around us were unbelievable and really carried us,” Elizabeth said. It is also a way to keep Michael’s name alive. “They really feel him very strongly in their lives,” she said of his four siblings, who will be involved with this scholarship.

It is open to students from the Hartford region who show academic ability, financial need, and a commitment to their community. The family also has a scholarship at Glastonbury High School, which they started in 2012. “It ended up being a really beautiful thing for us,” particularly reading the essays, in which applicants wrote about something kind they had done, she said. “There have been so many different stories that really moved us.”



### **MURTHA-GARVAN FAMILY FUND**

*Designated Endowment Fund*

Connecticut natives John S. and Winifred Garvan Murtha were devoted to each other, their family, and the Greater Hartford community. John, an attorney who served in the Navy during World War II, served as chair of the Hartford Foundation and what is now the United Way of Central and Northeastern Connecticut, and founded one of the largest law firms in the region. Winifred volunteered in Hartford Hospital's emergency room and was a blood drive volunteer and contributor to the American Red Cross. Winifred passed away in 2006 and John in 2011. "Both of my parents realized just how fortunate they were, and therefore participated physically and financially whenever they could in the Hartford area," said daughter Brenda Croke. "John's wisdom and practical, good judgment was valued throughout the community," former partner Mark Korber said. The Murthas created the Fund through their estate plans; grants will benefit the United Way.

---

### **DORIS M. PENNDORF LITERACY ADVANCEMENT FUND**

*Field of Interest Fund*

West Hartford resident Doris M. Penndorf came to Connecticut by way of Texas and Kansas. A nurse anesthetist, she worked at St. Francis Hospital for several years. The Doris M. Penndorf Literacy Advancement Fund was established through her estate. "She liked the idea of creating something that was lasting," said her attorney, Robert Scalise.

"Education was incredibly important to her," said friend Benjamin Albert, who described her as outwardly curmudgeonly, but inwardly generous and thoughtful. "I saw some of the most remarkable kindness [in her]." She was a voracious reader who felt literacy was important to future success. Her generous bequest will support local literacy programs, including those associated with the Career Pathways Initiative at Goodwin College, which helps adults prepare for and find manufacturing jobs.





**SALI G. RIEGE**  
**FIELD-OF-INTEREST FUND**  
*Field of Interest Fund*

Sali G. Riege’s charitable relationship with the Hartford Foundation dates back more than two decades. Since 1995, Sali’s funds have granted more than \$433,000 in the Greater Hartford community in support of youth programs, education, arts and culture, the environment, and, particularly, organizations serving those in need. When the Bloomfield resident died in January 2020 at the age of 93, her existing funds were merged into a new fund that will support opportunities for parents and children together.

The grants will follow the Hartford Foundation’s priority areas, providing critical resources to meet the region’s needs, particularly in the areas of learning, health, family support, and workforce readiness.



**THE SALVE! FUND**  
*Donor-Advised Fund*

David A. Lewis and Donna K. Manocchio of West Hartford created a donor-advised fund at the Foundation to centralize their giving. The couple are retired but stay busy; both are affiliated with Hands on Hartford—Donna is the organization’s former Board chair and a member of the Friends of Group and is also a pastor. David volunteers with VITA (Volunteer Income Tax Assistance). Donna grew up in an Italian family (*Salve!* is an Italian greeting) with the understanding that the family table is where everyone is welcome.

For Dave and Donna, this charitable fund is a way to use their money for good in the community.

**“You’re making a commitment to the community,”** David explains. And, Donna adds, **“We get to experience the joy of giving!”**



### GEORGIA H. SILLIMAN FUND

#### *Unrestricted Fund*

The tragedy of her first husband, Sgt. George Day, Jr.'s, death during World War II—only months after their marriage—brought Georgia Silliman from Colorado to Connecticut at the invitation of his parents. Georgia arrived with a degree in business accounting and economics from Colorado College. She settled in West Hartford and worked as an account executive at Aetna. She earned an MBA from the University of Hartford and met her second husband, John Silliman, who shared her love of art, travel, and ice skating. Together, they became a driving force behind the Ice Skating Club of Hartford. She was also a past president of the Hartford Art League and treasurer of The Town and County Club. Her early health challenges and the loss of her first husband made her “an extremely strong, strong-willed woman,” said Ann Marie Colebrook, John Silliman’s niece. “She was never at a loss [for] what she was going to do or not going to do,” said Kathy Paulsen, Georgia’s niece. Both families remained close to Georgia, who died in September at the age of 98. She left an unrestricted gift to the Foundation that will be used to improve the lives of residents in Greater Hartford.



### JOSEPH S. SUDARSKY MEMORIAL SCHOLARSHIP FUND

#### *Individual Scholarship Fund*

The three Sudarsky siblings established this scholarship in part to give back to Hartford, where their parents—Joseph S. and Edith Gaberman Sudarsky—grew up. Joseph, who was 94 when he passed away in 2013, joined the family law firm. Edith was a volunteer social worker before earning her master’s degree at age 60; she passed away in 2015 at the age of 92. Betty Sudarsky Bradley, Deborah Sudarsky, and Dr. Lewis Sudarsky, who grew up in West Hartford, described a family that for generations focused on education, where debate was important and where their parents spoke a lot about philanthropy. “I can’t think of a committee that my parents weren’t on,” Betty said. They chose to name the scholarship for their father because it would make him very proud to think he could give a step up to a promising young student, Lewis said. Graduating seniors from a Hartford public high school who are pursuing a four-year undergraduate degree, have demonstrated financial need, and have been involved with extracurricular activities such as community service or sports are eligible. “Dad would absolutely love a student athlete,” Deborah said.



### **WALKER FAMILY ENDOWMENT FUND** *Designated Endowment Fund*

Educators Patricia and Charles Walker raised their five children with the belief that saving money was of paramount importance, son Stephen Walker remembers. After Patricia passed away in January 2020 (Charles died in 2004), a designated endowment fund was established for a number of agencies.

The Walkers already have a donor-advised fund at the Foundation, with the children serving as fund advisors. Twelve agencies will share the grants from the new fund. Covenant Soup Kitchen, Hartford HealthCare at Home, Inc.'s VNA East hospice program, and the Windham Textile and History Museum, Inc. were selected in memory of son Charles "Wade" Walker. The Hole in the Wall Gang Fund, Inc. and Make-A-Wish of New Hampshire, Inc., were "transformative" for Stephen's son.

Emily Dickinson Museum at Amherst College is a Fund beneficiary, the Fidelco Guide Dog Foundation, Inc., Foodshare, Inc., Friends of the Bloomfield Public Libraries, Inc., South Park Inn, and Wintonbury Historical Society, where Charles was a past president.



### **JAQHAWN "JQ" WALTERS MEMORIAL SCHOLARSHIP FUND**

*General Scholarship Endowed Fund*

"I don't even think my heart is a heart. It's a basketball. It says NCAA across my chest," is how Jaqhawn Walters described himself in a video made during his time at Albertus Magnus College. The Hartford native, who graduated from Albertus in 2018 and played basketball professionally in Argentina, died in September. His mother, Trician Salmon, knew she wanted to create a scholarship fund to honor JQ, a standout player who would have coached if he didn't reach his goal of playing in the NBA. "Parker Memorial Rec Center was his outlet," she said, and where she could always find him. "It took away the pain of losing so many people, and growing up in the North End, it gave him a way to escape."

Scholarships from the Fund will help graduating high school seniors with a sports background—a preference is for basketball—as they work toward their own educational and career goals. Basketball, JQ said in the video, took him away from all the bad influences. "It makes me happy ... I play basketball for the love of the game."





### OLIVIA JOY WENTWORTH MEMORIAL FUND

*Donor-Advised Fund*

Olivia Joy Wentworth loved music, dancing, and sports, and wanted to be a teacher. She visited her mother, Robin, who worked at the South Windsor Public Schools program for special needs children, waiting for her ride home after school and spending time with the students. One family hired her to help with their children, and she would assist with summer programs, too. Olivia was very patient and good with the structure the children needed, her mother said. “I think that would have been a calling,” Robin said. After Olivia—a senior at Ellington High School—died in 2017 at the age of 17, Robin knew she wanted to do something to honor Olivia’s memory. She set up a fund in Olivia’s name to support charitable causes. “I do like the idea of giving to special needs schools or programs in her name,” Robin said.



### WHITE OAK FUND

*Field of Interest Fund*

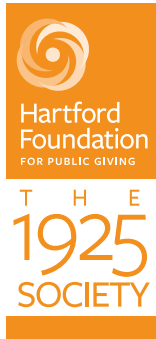
West Hartford residents Diane Mack and Robin Gilmartin created the White Oak Fund at the beginning of the year, and the events of 2020 underscored the need to support their areas of interest. The field-of-interest fund will support programs dedicated to protecting the environment, promoting equity and justice for all, and providing for basic human needs.

Diane wanted to use the required minimum distribution from her retirement account to start the Fund, and both were thinking about their legacy and what they want to leave in the world. They describe their relationship with the Foundation as an ongoing conversation and learning experience that helps them to stay connected to ways to do good in the world.

To learn more about opening a fund, please contact [Deborah Rothstein](#), vice president for development, at 860-548-1888, ext. 1019

Some of our donors have chosen to remain anonymous.

## THE 1925 SOCIETY



The 1925 Society honors a special group of donors who have made a provision for a legacy gift to the Hartford Foundation as part of their will, estate, and/or financial plan. We gratefully acknowledge these donors for their generosity, foresight, and leadership in creating an enduring legacy for Greater Hartford.

For information on joining The 1925 Society, please contact Deborah Rothstein, vice president for development, at 860-548-1888, ext. 1019.

## THE 1925 SOCIETY MEMBERS

Robert and Mary Abel  
 John O. and Juanita J. Alden\*  
 Susan B. Aller  
 Carole B. Amaio  
 Catherine H. Anderson  
 Gemma C. Baker  
 Frank and Sharon Barrett  
 Edward B. Bates\*  
 JoAnne Bauer\*  
 Maxwell M. Belding\*  
 Stephen J. Benedetto  
 John A. and Laura Berman  
 Nancy and Scott\* Bernstein  
 John E. Blair\*  
 Fred T.\* and Mary Blish  
 Richard and Barbara Booth  
 Eleanor Dickinson Borrup  
 James C. and Beverly Boyle  
 Harold C. Buckingham, Jr.  
 Dody and Bruce Cagenello  
 Jerome E.\* and Eleanor Caplan  
 Jim and Anne Carroll  
 James\* and Margaret Carroll  
 Howard L. and Sue Carver  
 Marie Anne Chabrier\*  
 Carl T. Chadburn and  
 Yvette Meléndez  
 Gail Champlin  
 Blair Childs\*  
 Mr.\* and Mrs. David L. Childs

Stephan L. and  
 Francine L. Christiansen  
 Pamela Churchill  
 David and Anna Clark\*  
 Mr. and Mrs. William J. Cochran  
 Barbara V. G. Coffin  
 Michael and Naomi Cohen  
 Sara Marcy Cole  
 Alison Coolbrith\* and Barry Lastra  
 Carol Santry-Covello  
 James and Marian Cox-Chapman  
 Mary H. Crary  
 Anne Cremer Smith  
 Linda Cromwell  
 James M. and Pamela M. Cronin  
 Ethel Davis  
 Harold C. and Doreen Davis\*  
 Ruth Ann Coleman Davis  
 Michael Decicco\*  
 Bobby DiBella  
 Jill Donan  
 Robert and Gladys Dunn\*  
 Reverends William J. and  
 Hope H. Eakins  
 James F., Jr. and  
 Isabelle S. C. English\*  
 Dr. Stanley Fellman  
 Robert and Linda Forrester  
 Ellen and John Franklin  
 Jacquelyn M. T. Glynn

Robert B. and  
 Francine L. Goldfarb  
 Laurel Goodgion  
 Hoyt and Sally Goodrich  
 Norman A. Grabowski, Jr.  
 Viviane L. Grady  
 Reverend and Mrs. Peter Grandy  
 Peter Grant  
 Harry J. Gray\*  
 Nancy D. and  
 Robinson A.\* Grover  
 Christopher H. Hall  
 and Felicity Anne Harley  
 Elwyn and Elsie Harp  
 Sara L. Harrigan  
 Charles E. Heilig\*  
 John W. and Marcia W. Hincks  
 Suzanne M. Hopgood  
 and Frank C.\* Lord  
 Joseph K. Hooker\*  
 Barnaby Horton  
 Margaret C. and  
 Wallace R. Hughes\*  
 Bud and Sheila Jacobs  
 Marianne F. Jahn  
 Stephen A. and Myra Johnson  
 Dennis A. and Donna E. Jolly  
 Russell H. and Barbara G. Jones  
 Linda J. Kelly  
 Mrs. Janet Kepner  
 Mr.\* and Mrs. Mrs. Martin Kesten

Donna and John* Kidwell	Mr. and Mrs. Warren C. Packard	Leslie M. Stophel*
Jim and Jessie Kingston	David B. Payne	Melinda Martin Sullivan
Patricia Ann Kiser	Raymond J. and Elizabeth C. Payne*	Louise L. Sutton
David and Janice F. Klein	Agnes S. and William R. Peelle, Jr.	Dr. Jacqueline Harris Taback
Nancy M. Kline	Patricia K. Pendergrast	Carol and Kink* Terry
Mark F. Korber	Doris M. Penndorf*	Ann Thomas and Mike Bonzagni
Julie Krug	Brewster B. Perkins	Jane and Richard E. Thompson
Anne C.* and Lee G. Kuckro	Arthur E. and Sheila Phillips	James A. Trail
Beverly J. Malone Ladizki* and David A. Ladizki	Justin Piergrossi	Deborah and Carl Ullman
John and Mary Lawrence	Anne Bingham Pierson	Michael J. Vanderlaan*
Sandra A. Lee	Dina L. Plapler and Earl F. McMahon	Gretchen L. vanHoosier
Jane A. Lennox	Barbara S. Podann	Ellie and Jim Venneman
Harriet B. Lidgerwood*	Claire M. and Millard H.* Pryor, Jr.	Wade A. Vianney
Mr.* and Mrs. Charles R. Lindberg	Lori* and Stephen Rabb	Mr.* and Mrs. Bernard S. Vinick
Tom and Margah Lips	Beth Redstone	Mr. Paul J. Volpe
Mr. and Mrs. Thomas H. Lorch	Elenor G. Reid	Lyn Gammill Walker
Elaine Lowengard	Rod and Janice Reynolds	Beatriz Wardlaw
Mr. Lawrence J. Lunden	Belle K. Ribicoff	Judith S. Wawro
Brendan and Mimi* Lynch	John H. and Sali G. Riege*	Sally J. Weisman
Mary and Ken* MacCormac	Jack* and Susan Ritchie	Maureen K.* and Richard M. Wenner
Mr. and Mrs. Thomas E. Mahoney	Mr. and Mrs. Paul Robotham	Bob and Mary Ellen White
Mari Merwin	Bert and Betty Rosen*	David C. Wichman, Esq.
Harry Meyer	June Miller Rosenblatt	Mr. Ernest C. Wignall
Stephen and Patricia* Middlebrook	Ron Roy	Mr. and Mrs.* Michael Wilder
Margaret A. Miller	Kenneth and Susan Rubenstein	Sherwood S. and Magrieta L. Willard
Worthington "Mike"* and Nancy B. Mixter	Richard and Lea Rubenstein	Joyce C. Willis*
Maria I. Mojica and Edgar Colon	Olive Rudolph	Jan Winkler* and Hermine Drezner
Paul Morrisette	Chris Rusack and Lisa Gladke	Sandra B. Wood
Thomas Morrisette	Peter* and Betsy Russell	Edward and Carol Wrobel
Mr. and Mrs.* E. Laird Mortimer, III	Mr. and Mrs. R. Malcolm Salter	Henry M. Zachs
Frederick J. Mullen	Betty Sarubbi	Judith M. Zachs
Mark and R. Carol Muradian	William A. and Maxine Rothe* Schortman	Gerard F. Zak
Hap Murphey* and Catharine W. Reid*	Marcie Shepard	
Bob and Lynn Murray	Ralph M.* and Ruth K. Shulansky	
Mr. and Mrs. John S. Murtha*	Stephen* and Amy Lynn Silverman	
Art and Reba Nassau	Carol Simpson and Robert Hewey	
Ann Faude Newbury	Caryl and Robert* Siskin	<i>Anonymous members = 33</i>
The Hon. Jon O. Newman	Esther Spafard	.....
Don and Brad* Noel	Henry "Skip" Steiner	* Deceased
Mr. and Mrs. William J. Olsson*	Katharine H. Steinwedell	
	Edward* and Marilyn Stockton	

.....

We make every effort to report accurately on those who are leaving a legacy through the Foundation. However, if we have inadvertently overlooked or misstated your information, we offer our sincere apologies. Please contact us so that we may ensure our list is corrected.



## FUNDS

The Hartford Foundation currently administers 1,394 funds.

### DESIGNATED FUNDS

Alleluia House Fund	CT Humane Society Endowment Fund	Russell and Virginia Foster Memorial Fund
Margot and Lee Allison Fund	John M. K. Davis & Mignon Foerderer Davis Fund for Duncaster	The Richard B. Fried Fund for AIDS Connecticut (ACT)
Amistad Foundation Fund	Anthony J. and Lucille A. Diorio Fund	Friends of New-Gate Prison Fund
Anonymous (CF26) Fund	John and Rose Draghi Memorial Fund	Rita Ann Gelinias Fund
Anonymous No. 41 Fund	Drezner/Winkler Fund	Miriam E. and Leon H. Glazer Fund #1
Anonymous No. 48 Fund	Sara R. and Alan A. Dun Fund	Emma Katz, Sol & Nathan Glazer Memorial Fund
The ARC of Farmington Valley Endowment Fund	Gladys B. and Robert E. Dunn Designated Fund for the American School for the Deaf	Dorothy C. Goodwin Fund
Artists Collective Fund	Gladys B. and Robert E. Dunn Fund for Foodshare	Genevieve H. Goodwin Fund
ASK Endowment Fund fbo Hartford Art School	Robert E. Dunn Fund	Helen Whittlesey Goodwin Fund
Gladys T. and Robert B. August Fund	Walter J. Dyber Fund	James L. and Genevieve H. Goodwin Fund
Arline and Joseph L. Baum Fund	East Granby Library Association Book Endowment Fund	Grace Church Restricted Fund
Elsie R. and C. Gordon Beckwith Fund I	Mary W. Edwards Charitable Fund For the Benefit of the "Mountain" and Granby Land Trust, Inc.	Granby Land Trust, Dimock Fund
BEENA Fund	Mary W. Edwards Charitable Reserve Fund No. 1	Granby Land Trust, General Fund
Phillip I. Blumberg Fund	Mary W. Edwards Charitable Reserve Fund No. 2	Marion and Ellsworth Grant Fund
Fund in Honor of David Borden	Mary W. Edwards Charitable Reserve Fund No. 3	Greater Hartford Arts Council Fund
Nancy Coleman Braender and W. Philip Braender Fund No. 2	Elizabeth Park Conservancy Fund	Greater Hartford Chapter AGO Fund
The Bridge Family Center Fund	John E. Ellsworth Fund	William P. Haas Fund I
Fund for Hartford's Camp Courant	John E. Ellsworth Fund, for the Symphony Society of Greater Hartford, Inc.	Hall High School Fund for the Common Good
Arnold E. and Mary I. Carlson Fund	Farmington Valley Arts Center Fund	Hands on Hartford Endowment Fund
Marion H. Chaffee Fund #1	Farmington Valley Arts Center Fund, in memory of Stanley D. Fisher	Ida L. Hartenberg Charitable Fund
Childs/Alcorn Fund	Janet N. Fisk Fund for the Benefit of Windsor Independent Living Association	Hartford Art School, Inc. Special Fund
Beatrice D. Clapp Fund	Patricia H. Fitt Fund	Hartford Stage Fund
Mabel H. P. Clark Trust No. 2		Hartford Symphony Orchestra Endowment Fund
Connecticut Council for Philanthropy Endowment Fund		Virgil L. and Dorothy H. Hartzog Fund
The Connecticut Forum Endowment Fund		Marjorie F. Hazen Trust
Connecticut Radio Information Service (CRIS) Endowment Fund		Charles, Alice (Murray) and Cheryl A. Heilig Fund
ConnectiKids Endowment Fund		Jean McMillan Hemstreet Fund
Covenant Preparatory School Endowment Fund		Dennis Hersh Humanitarian Fund
CREC Greater Hartford Academy of the Arts Endowment Fund		

Historical Society of Glastonbury Endowment Fund	McLean Foundation Endowment Fund	Douglas T. Smith & Dorothy P. Smith Fund for the Benefit of the Wadsworth Atheneum
Shepherd Monson Holcombe Fund No.1	Robert P. Merritt Fund	Ray Smith Endowment for Education and Conservation Fund
Shepherd Monson Holcombe Fund No.2	Stephen and Patricia Middlebrook Fund I	Sybil Ward Smith Memorial Fund
Shepherd Monson Holcombe Fund No.3	Shirley M. and Edward H. Morgan Fund I	South Windsor Historical Society Endowment Fund
Shepherd Monson Holcombe Fund for The Bushnell	Barbara S. Morley Memorial Fund	Elizabeth W. Stedman Fund
Edward R. Huckman Fund	Murtha-Garvan Family Fund	Moses Stern Memorial Fund
ImmaCare Endowment Fund	Barbara C. Newcomb Fund	Elizabeth O. Sturtevant Fund
Immanuel Church Foundation for the Elderly Fund	Oak Hill Endowment Fund	Michael and Janet Suisman Community Access Fund
Immanuel Congregational Church Mission Fund	Old State House Fund	TheaterWorks Endowment Fund
Loretta K. Ingersoll Fund	C. Henry and Mary E. G. Olmsted Fund	Leonard M. Troub Foundation, Inc. Trust, in memory of Staunton Williams
Innovation Fund for Hands on Hartford	John J. Padbury Memorial Fund	United Way, Inc. DBA United Way of Central and Northeastern Connecticut
Frances H. Jackson Fund	Paradiso Family Fund	Valley Falls Farm Fund
Jonathan's Dream Endowed Fund	Anne P. and Andrew Pinto Fund	Van Winkle Fund
Hugh M. Joseloff and Helen H. Joseloff Fund	Planned Lifetime Assistance Network of Connecticut, Inc. Fund	Wendy F. Vance Trail Fund
Journey Found Endowment Fund	Playhouse Theatre Group Endowment Fund	Stanley W. Vogel Family Fund
Junior League of Hartford Endowment Fund	Barbara and William Podann Fund	Robert and Elizabeth von Dohlen Fund
Josef and Anastasia Kalvoda Fund	Millard Pryor Memorial Endowed Fund	The VRN Fund
Ilene and Marty Kaplan Fund for PLAN of Connecticut	Richmond Memorial Library Endowment Fund	Walker Family Endowment Fund
Frank Kavitsky Fund No. 2	Sebastian E. Rosano and Carmelina A. Rosano Memorial Fund	Oscar and Ruby T. Wegman Fund I
Koopman Fund fbo Hartford Art School	Moses B. and Ann Rosenauer Fund	Anna and Isaac Weintraub Fund
Leadership Greater Hartford Endowment Fund	William J. & Esther L. B. Sander-Anna E. Andersen Fund	The Foundation for West Hartford Public Schools Endowment Fund
Literacy Volunteers of Greater Hartford Fund	Vernal M. Schnabel Fund	Winding Trails Endowment at the Hartford Foundation
Margaret R. and Stanley B. Loucks Fund	William Schortman and Maxine Rothe Schortman Fund	Friends of Wood Memorial Library and Museum Endowment Fund
Harry W. Lynn, Jr. Charitable Trust Fund	Haig Shahverdian Scholarship Fund	Raymond B. and Thelma C. Woodbridge Memorial Fund
Manchester Area Conference of Churches Endowment Fund	George J. Sherman and Lottie K. Sherman Fund	World Affairs Council Connecticut Fund
Wayne and Louise Mantz Family Fund	Dorothy and Alfred Silberman Chapel Fund	Father Paul Wysocki and Family Fund No. 1
Gloria J. McAdam Fund for Foodshare	Simsbury Land Trust Richard A. Davis Endowment Fund	Father Paul Wysocki and Family Fund No. 3
Gioconda B. McGettigan Fund for St. Rose Church	James B. and Beatrice D. Slimmon Fund	Zachs Family Fund for the Bushnell Center for Performing Arts
Jackie and Dollie McLean Family Fund		

Zachs Family Fund for the Chabad Jewish Center  
 Zachs Family Fund fbo Charter Oak Cultural Center  
 Zachs Family Fund for the Connecticut Children's Medical Center  
 Zachs Family Fund for the Connecticut Historical Society  
 Zachs Family Fund for Hartford Stage  
 Zachs Family Fund for the Hartford Symphony Orchestra  
 Zachs Family Fund for Oak Hill  
 Zachs Family Fund fbo Real Art Ways  
 Zachs Family Fund for Trinity College Hillel  
 Zachs Family Fund for UConn Hillel: The Foundation for Jewish Campus Life  
 Zachs Family Fund for the Wadsworth Atheneum Museum of Art  
 Joseph A. Zita Fund

#### DONOR-ADVISED FUNDS

4-CT Statewide COVID-19 Relief Fund  
 Abel Family Fund  
 Allen Family Fund  
 Alvord Family Fund  
 American Eagle Financial Credit Union Fund  
 Anonymous No. 38 Fund  
 Anonymous No. 45 Fund  
 Anonymous No. 46 Fund  
 Anonymous No. 49 Fund  
 Anonymous No. 50 Fund  
 Aronson Family Fund  
 ASK Endowment Donor-Advised Fund  
 Beatrice Fox Auerbach Foundation Fund  
 Richard and Alice Baxter Fund  
 Lisa and John Behan Family Fund  
 Stephen Benedetto Fund  
 John and Laura Berman Fund

Nancy Bernstein Fund  
 David T. Black Memorial Fund  
 Ronald T. Black Memorial Fund  
 The Bluebird Fund  
 Bernard Blum Fund  
 Boccaccio Family Trust  
 Ann E. Thomas and Michael B. Bonzagni Fund  
 Albert and Elizabeth Bourget Fund  
 The Lyman B. Brainerd Family Foundation Fund  
 Sherry L. Brown-Marfuggi Family Fund  
 Iran Brugueras, Jr. SPLASH Fund  
 Charles and Doris Bryan Fund  
 Budd Family Fund  
 Buhler Family Fund  
 Jim and Anne Carroll Fund  
 Lawrence Wells Case and Florence Reid Case Memorial Fund  
 Yvette Meléndez and Carl T. Chadburn Foundation Fund  
 J and L Chapman Charitable Fund  
 Cheney Family Fund  
 Katherine C. Childs Memorial Fund  
 Anna F. and David W. Clark Fund  
 Mrs. James Sage Coburn Fund  
 David L. Coffin, Jr. Memorial Fund  
 Libbian and Jerry Cohen Fund  
 Michael and Naomi Cohen "Prophet Micah" Fund  
 The Community Caring Fund  
 Connecticut Hispanic Bar Association Fund  
 James Christopher Conrad Memorial Fund  
 Charles B. Cook Fund  
 Lastra Coolbrith Fund  
 Lawrence C. Davis Memorial Fund  
 DeBell Family Fund  
 Elena Haynes DeVaughn, Ph.D. Fund  
 Robert "Bobby" DiBella Fund

Duclos Family Charity Trust Fund  
 Paul H. Eddy and Elizabeth J. Normen Fund  
 EHRE Fund  
 Fairview ALL IN Fund  
 Fechter Family Foundation Fund  
 Fiondella Family Trust  
 Stanley D. and Hinda N. Fisher Fund  
 Daphne G. Fuller Fund  
 Fund for the Deborah Eldridge Service Award of the Estate and Business Planning Council of Hartford  
 Gándara Family Fund  
 Richard P. Garmany Fund  
 Garnett Gibbs Family Fund  
 Brenda C. and Martin J. Geitz Family Fund  
 Gifts of Music Fund  
 The Giving Tree Fund  
 Anzie O. Glover Memorial Fund  
 Ellen Jeanne Goldfarb Memorial Fund  
 Harry E. Goldfarb Family Foundation Fund  
 Harry E. Goldfarb Family Foundation Fund II  
 Good Family Fund  
 Goodwin Being Fund  
 Greater Hartford Jaycees Fund  
 Richard S. and Doris J. Griffith Fund  
 Brother Carl Hardrick Institute for Violence Prevention Fund  
 Elwyn V. and Elsie H. Harp Family Foundation Fund  
 Hartford Renaissance District Fund  
 Hartford Rotary Arts for Youth Fund  
 Heneghan Family Fund  
 Herrman Family Foundation Fund  
 Hoffman Family Fund  
 Alison and Nathaniel Howe Fund  
 Anthony S. and Evelyn L. Hulme Charitable Fund  
 Ilg Family Fund



Jackson-Batchelder Family Fund	MISAC Fund	Mary T. and Douglas G. Russell Family Fund
JCJ Architecture Fund	Melissa Joy Molin Memorial Fund	The Salve! Fund
Donald W. and Dorothy D. Johnson Fund	MorningStar Fund	Maria Sanchez Fund
S. A. Johnson Family Fund	Gerard H. and Marjorie M. Morrissey Fund	Savin Family Fund
Marjorie Jolidon Fund	Laird and Ann Mortimer Fund	Beth Schiro Fund
David and Helen B. Kaplan Fund	Mowell Family Fund	Schiro Fund
Keiller Family Fund	Diane Lynn Nappier Fund	Schonberger September 11 Fund
Kids' Education Fund	Newington High School Class of 1983 Fund	George A. Scott Memorial Fund
Kiser Family Fund	Brad and Don Noel Family Fund	Barbara and Ted Sergi Fund
Deborah and Steven Kleinman Fund	Arwen and George Norman Family Fund	Gregory Shaskan Memorial Fund
Kristine Barbara Guest Memorial Fund	Drs. Kola and Trudy Olofinboba Family Fund	Carey Shea and Calvin Parker Fund for Community Development and Economic Justice
Konover Coppa Family Fund	Sharon R. O'Meara Fund	Jean Edward and Mary Beach Shepard Fund
Catherine M. Kornas Fund	Orr Family Fund	Sigma Pi Phi Beta Iota Boule Endowment Fund
Beverly J. Malone Ladizki and David A. Ladizki Fund	Oz Griebel Fund	Donald and Linda Silpe Fund
John B. Larson Healthcare Worker Nourishment Fund	Edouard L. Paradis Charitable Trust	Stephen M. and Amy Lynn Silverman Family Fund
Latino Children's Fund	Paternoster Family Fund	Sovronsky Family Fund
Elizabeth M. Landon and Harriette M. Landon Donor-Advised Fund	Raymond J. and Elizabeth C. Payne Fund	Anne Stanback and Charlotte Kinlock Fund
Lazarus Freckleton Fund	Barton W. Pease Memorial Fund	Sugarman Family Fund
Alan and Judy Lieberman Family Fund	Plapler McMahon Family Fund	Louise L. Sutton Fund
John R. Lindberg Fund	JoAnn and James Price Fund for Community Safety	Thibadeau Family Fund
Margaret H. Lindberg Fund	Dorothy B. Ralston Fund	J and K Thomas Fund
Tom and Margah Lips Fund	Belle K. and Irving S. Ribicoff Fund	Westley V. Thompson and Rosemarie E. Thompson Fund
Virginia Grace Loomis Memorial Fund for Literacy and Literature	Sali Godard Riege Donor-Advised Fund	Toward a Sustainable Future Fund
Worth and Louise Loomis Foundation Fund	The Right Track Fund	Town and County Club Fund
Jerome H. and Elaine Title Lowengard Fund	Ritter Family Fund	Trumble Family Fund
Lupariello Family Fund	Robbins Family Fund	Tom Tucker Memorial Fund
James B. Lyon Fund	Betty and Henry Roberts Fund	Alex and Wendy Vance Fund
MacLean Family Fund	Vernon D. and Florence E. Roosa Family Foundation Memorial Fund	Richard D. Wagner & Madeline/Lina F. Wagner Fund
Eric T. Mahoney Memorial Fund	Samuel Roskin Trust	Patricia and Charles Walker Family Fund
Malley Family Fund	Ross Memorial Fund	Olivia Joy Wentworth Memorial Fund
Aaron Marks Foundation Fund	Harold L. and Marilyn Rothstein Fund	Peter Wertheim Memorial Fund
George H. and Constance Wolcott Mason Fund	Judith L. Rozie-Battle, JD and Stanley F. Battle, PhD Family Fund	Wethersfield Youth Services/ Steven M. Salter Memorial Fund
Nick Mayer Memorial Fund	Florence and Charles Rubenstein Family Foundation Fund	Whittlesey & Hadley Fund
Alan and Peggy Mendelson Fund		
Thomas M. Meredith Fund		

Michael and Marjorie Wilder Fund  
 Magrieta L. and Sherwood S. Willard Fund  
 Jay and Sonja Williams Family Fund  
 Wilson Family Fund  
 Worthington Family Fund  
 Carol and Edward Wrobel Family Fund  
 Myron Parker Yeomans/Edward Myron Yeomans Family Fund  
 Amiel P. Zak Public Service Fund  
 Connor Scott Zieky Fund  
 Zammitti Family Fund  
 Zayas Law Fund for Arts and Education

### PREFERENCE FUNDS

Ruth D. Abbott Fund  
 Mildred C. Allison Fund  
 Anonymous Fund  
 Anonymous No. 1 Fund  
 Alfred M. Archer Fund  
 Thomas L. and Dorothy Clark Archibald Fund  
 Katharine Derr Barney Fund  
 Charles S. Bissell Fund  
 Carolyn and Blair Childs Memorial Fund  
 William P. and Anne A. Conklin Fund  
 Gladys B. and Robert E. Dunn Fund for Youth Leadership  
 S. Joseph Ferla Fund  
 William S. Fuller Fund  
 Howard Hunt Garmany Fund  
 Gengras Family Fund  
 Charles A. and Cornelia Catlin Gilbert Fund  
 Francis and Mary A. Goodwin Memorial Fund  
 William G. and Mayme J. Green Fund (from Raymond B. Green)  
 Frank C. and Agnes E. Griswold Fund  
 Warren E. and Virginia P. Hayden Trust Fund

Charles F. Chase, Helen Bourne Chase & Genevieve Chase Hewes Fund  
 Laura E. Holcomb Fund  
 Tudor F. Holcomb Fund  
 Ellery Hurd Fund  
 Ann M. Jainsen Fund  
 Oliver F. and Garnette T. Johnson Fund  
 Gladys C. Keeney Trust  
 Walter O. R. Korder Fund  
 Karl C. Kulle Fund  
 Ethel S. Layton Fund  
 Edward B. Lewis, III and Anne H. Lewis Fund  
 William Lidgerwood Fund  
 Ida P. Mason Fund  
 Harriet K. Maxwell Fund  
 Robert and Mary M. Merritt Fund  
 Miller Family Foundation Fund  
 Roche M. and Jane C. Passero Fund  
 Pomeroy-Brace Fund  
 Charles E. and Mildred Rauch Fund  
 Ray-Andrews Fund in memory of Charles Henry Ray, Julia A. Ray, and James P. Andrews  
 Ruth B. Rouse Fund  
 Augusta R. Rubin Fund  
 William and Alice Rupp Fund  
 Guy C. and Anne T. Shafer Fund  
 Grace J. F. Smith Fund  
 Herman and Marie Sonnenberg Trust Fund  
 William R. & Mazy Worthington Penrose & Nathalie Penrose Swetland Fund  
 Thomson Family Fund  
 Lillian W. and William B. Welden Fund  
 Mildred E. Whitney Fund  
 Doris E. Wiswell Trust

### GENERAL SCHOLARSHIP ENDOWMENT

*These funds support the General Scholarship Program:*

AB Club Scholarship Foundation Fund established by John D. Wardlaw  
 Frederick G. Adams Scholarship Fund  
 Alliance Française of Hartford Harpin/Rohinsky Scholarship Fund  
 Barbara Mordarski Bartucca and Peter J. Bartucca Scholarship Fund  
 Leo Bedrick Memorial Scholarship Fund  
 Maria Gonzalez Borrero Scholarship Fund  
 Philip and Nancy Braender Scholarship Fund  
 W. Philip Braender and Nancy Coleman Braender Scholarship Fund  
 Mathew Caruso Memorial Scholarship Fund  
 Clark Family Fund  
 CohnReznick Scholarship Fund  
 Connecticut Mortgage Bankers Social Affairs Fund  
 Day Pitney LLP Scholarship Fund  
 Drs. Booker T. and Elena L. DeVaughn Scholarship Fund  
 Harry A. Donn Scholarship Fund  
 Lillian C. Donn Scholarship Fund  
 Sonny and Billie Duval Memorial Scholarship Fund  
 Symee Ruth Feinberg Memorial Scholarship Fund  
 Charles, Sophie and Helen Fine Family Fund  
 Stanley D. and Hinda N. Fisher Scholarship Fund  
 Fontana Family Scholarship Fund  
 Janice and Kerry Foster, Sr. Scholarship Fund  
 KJ Foster Scholarship Fund  
 Irving Goldberg Latin Scholar Fund

Robert B. and Francine L.  
Goldfarb Family Scholarship Fund

Alan E. Green Hartford Housing  
Authority Scholarship Fund

Fred H. Greenwood  
Engineering Scholarship Fund

Roland S. Harris, Jr.  
Scholarship Fund

Ida L. Hartenberg  
Charitable Fund

Hartford Grammar  
School Scholarship Fund

Hartford Foundation General  
Scholarship Endowment Fund

Nina L. Hartin Memorial  
Scholarship Fund

The Harugari Lodge of  
Broad Brook Fund

Arman G. and Betty A.  
Hatsian Scholarship Fund

Wendy and Boyd Hinds  
Memorial Scholarship Fund

Gerald and Phyllis Hughes Fund

Walter "Doc" Hurley Scholarship  
Fund for Greater Hartford

Jim and Marlene Ibsen  
Scholarship Fund

John C. Ike and Middie Ike  
Memorial Scholarship Fund

The Interracial Scholarship  
Fund of Greater Hartford

Merva Jackson Scholarship Fund

James A. Jones Memorial Fund

Peter Jung Scholarship Fund

Ilene and Marty Kaplan  
Scholarship Fund

Linda J. Kelly Family  
Scholarship Fund

Janice F. and David M.  
Klein Scholarship Fund

Herman P. Koppelman Fund

Rae and Abraham Koppelman  
Additional Fund

Sylvia H. Koski Scholarship Fund

John H. Lewis III  
Scholarship Fund

Noble E. and Emma Belknap  
Lord Memorial Scholarship Fund

Antoinette Shippen  
Mason Scholarship Fund

MassMutual Foundation for  
Hartford, Inc. Scholarship Fund

Meyer-Kimball Memorial  
Scholarship Fund

Rhoda L. Miller Music  
Scholarship Fund

Michael Morrisroe Memorial  
Scholarship Fund

Murtha Cullina LLP  
Scholarship Fund

Alice M. Neenan Memorial  
Scholarship Fund

Vartan K. Omartian and Beatrice  
Omartian Scholarship Fund

Richard Palmer Scholarship Fund

Robert J. Patterson  
Scholarship Fund

Daniel Clark Perkins Fund

Pillar Community Development  
Corporation Scholarship Fund

Shyamala Raman  
Scholarship Fund

Dr. Sedrick J. and Alyce T.  
Rawlins Scholarship Fund

Janet B. Rose Memorial  
Scholarship Fund

Bert and Betty Rosen  
Scholarship Fund

June Miller Rosenblatt  
Scholarship Fund

Maxine Rothe Schortman Award

Neal R. Seigel Memorial  
Scholarship Fund

Herb Sheintop Memorial  
Scholarship Fund

Sigma Pi Phi Fraternity, Alpha  
Psi Boule Scholarship Fund

Sigma Pi Phi Fraternity, Alpha  
Psi Boule Scholarship Fund No.2

The Stearns Fund

George F. Stevens  
Education Fund

Trumble Family Scholarship Fund

Dorothy L. and Justin R.  
Tucker Scholarship Fund

Tucker Family Scholarship Fund  
in Memory of Abraham H. and  
Fannie K. Tucker, David J. Tucker,  
Thelma (Tucker) Cooper and  
Robert P. Tucker

Thomas J. Villano  
Scholarship Fund

Jaqhawn "JQ" Walters  
Memorial Scholarship Fund

Josh Wittenberg Memorial  
Scholarship Fund

Elmer Cooke Young-Ethel  
Taylor Young Scholarship Fund

## COMMUNITY COLLEGE SCHOLARSHIP ENDOWMENT

*These funds support the  
Community College Scholarship  
Endowment:*

Roxanne Cave Scholarship Fund

Community College  
Scholarship Endowment Fund

Mimi and Brendan Lynch  
Community College  
Scholarship Fund

June Miller Rosenblatt Community  
College Scholarship Fund

Peggy Miller Community College  
Scholarship Fund

## INDIVIDUAL SCHOLARSHIP FUNDS

Joyce and Philip Acquaviva Fund

American Marketing Association-  
Connecticut Chapter, Anna C.  
Klune Memorial Scholarship Fund

Eric Amenabar Memorial  
Scholarship Fund

Brian A. Aselton Memorial  
Scholarship Fund

Shyaam Bachman Memorial  
Scholarship Fund

Bartlett Family Scholarship Fund

John Bell and Lawrence  
Thornton Scholarship Fund

Lebbeus F. Bissell  
Scholarship Fund

Bloomfield Scholarship Fund

J. Leo Bodo Scholarship Fund



Donald and Dorothy Bonelli  
Puerto Rican Education Fund

Bonzagni and Thomas  
Families Scholarship Fund

Laurel M. Cohn Scholarship Fund

Patricia L. Coombs  
Scholarship Fund

Phyllis Kosiorek Corder and Roy  
R. Corder Scholarship Fund

Joy V. Decicco College  
Scholarship Fund

Aldo DeDominicis  
Scholarship Fund

Albert T. and Jane N.  
Dewey Fund

Daniel R. DiNardi Memorial  
Scholarship Fund

Farmington UNICO  
Scholarship Fund

Stanley D. Fisher  
Scholarship Fund

Jan H. Fonteyne Memorial  
Scholarship Fund

FPA Connecticut Valley  
Chapter Scholarship Fund

Ethel Cushing Gardner Fund

Glastonbury Memorial  
Scholarship Fund

Drew Charles Goulet  
Memorial Scholarship Fund

Hartford Whalers Booster  
Club Scholarship Fund

Jennifer Hodges Fund

Dr. Frank and Florence  
Marino Scholarship Fund

The Middlebury Fund

Miss Ruth Scholarship Fund

Douglas J. Myers  
Scholarship Fund

NSDAR - Marjorie P.  
Nutt Scholarship Fund

Carl P. Palazzotto "P.M.A."  
Scholarship Fund

Sylvia Parkinson Fund

Mae Passini and Juliet  
Anderson Memorial Fund

Drs. Nima Patel and Daniel  
McNaughton Scholarship Fund

Dorothy E. Hofmann Pembroke  
Scholarship Fund

Joyce S. Picard Scholarship Fund

Dr. Nicholas J. Piergrossi  
Memorial Scholarship Fund

Kenneth R. Pietrasko Memorial  
Scholarship Fund

Pomeroy-Brace Scholarship Fund

Dr. Sidney Rafal Memorial Fund

Catharine W. Reid  
Scholarship Fund

Ritter Family Scholarship Fund

Roosa Family Scholarship Fund

Samuel A. Roth Scholarship Fund

Bill and Maxine Schortman  
Scholarship Fund

Seabury Employee  
Scholarship Fund

Deedee Segel-Hartford Courant  
Internship Fund

Aubrey M. Seppa Memorial  
Scholarship Fund

Mari Shinoda Scholarship Fund

Linda Starikov Singer  
Memorial Scholarship Fund

South Asian Bar  
Association Endowed Fund

Peter T. Steinwedell  
Scholarship Fund

Joseph S. Sudarsky Memorial  
Scholarship Fund

United Nations Association  
of Connecticut (For Greater  
Hartford) Scholarship Fund

Julie Veilleux Memorial  
Scholarship Fund

Villano-Clarus Scholarship Fund

Harold B. Waldo Fund

Muriel S. and Gordon A.  
Wilson Scholarship Fund

L. Wynne Wister Memorial  
Scholarship Fund

Your Chance Scholarship Fund

Amiel P. Zak Scholarship Fund

Richard S. Allen Fund

Robert L. and Susan B. Aller Fund

Carol Alcorn Fund

Morgan Hanlon Alvord and  
Dorothy Deegan Alvord  
Memorial Fund

Frank E. Amidon Fund

Arthur T. and Barbara L.  
Anderson Fund

Anonymous No. 2 Fund

Anonymous No. 3 Fund

Anonymous No. 4 Fund

Anonymous No. 9 Fund

Anonymous No. 12 Fund

Anonymous No. 42 Fund

Anonymous No. 52 Fund

Anonymous (CF01) Fund

Anonymous (CF02) Fund

Anonymous (CF03) Fund

Anonymous (CF04) Fund

Anonymous (CF05) Fund

Anonymous (CF06) Fund

Anonymous (CF08) Fund

Anonymous (CF11) Fund

Anonymous (CF12) Fund

Anonymous (CF13) Fund

Anonymous (CF19) Fund

Anonymous (CF20) Fund

Anonymous (CF21) Fund

Anonymous (CF22) Fund

Anonymous (CF24) Fund

Anonymous (CF27) Fund

Anonymous (CF28) Fund

Anonymous (CF30) Fund

Anonymous (CF32) Fund

Anonymous (CF33) Fund

Anonymous (CF34) Fund

Anonymous (CF35) Fund

Everett E. Arnold Fund

Flora G. Arons Fund

Mrs. Beatrice Fox Auerbach  
(from her sister, Fannie Fox  
Samuels) Fund

## UNRESTRICTED FUNDS



F. Russell Abell Fund

Olivia and Frederick Adams Fund

Mrs. Jane C. Allen Fund

## B

J. F. Baker Fund  
 Jacob and Mary Balgley Fund  
 Robert and Eleanor Balgley Fund  
 Michael R. and Deborah F. Bangser Fund  
 Goodman and Cecelia Banks Memorial Fund  
 Joseph J. and Josephine L. Bardani Fund  
 Alice Barlow Fund  
 Luther I. Barnard Fund  
 D. Newton Barney Family Fund  
 Bertha S. Barrar Fund  
 Marjorie G. Barrett Fund  
 Robert W. and Alice M. Barrett Fund  
 Thomas R. Barrett Fund  
 Clara G. Bartlett Fund  
 Edward B. and Mary Louise Bates Fund  
 Mrs. James G. Batterson Fund  
 Grace R. Beardsley Fund  
 John H. and Eleanor L. Beardsley Fund  
 Roxanne Beardsley Fund  
 Michael C. Beckanstin Fund  
 Mrs. Gladys Goodman Beckanstin Fund  
 Elsie R. and C. Gordon Beckwith Fund II  
 Olivet Beckwith Fund  
 Dorothy Beers Fund  
 Maxwell M. and Ruth R. Belding Fund  
 John R. and Joan K. Berthoud Fund  
 Helen W. Bigelow Fund  
 John E. Blair Fund  
 I. R. and Clara Blumenthal Fund  
 Joan J. and Morton A. Blumenthal Fund  
 George F. Boardman Fund  
 William C. Boardman Fund  
 Borges Family Fund  
 Dorothy Jennings Boyd Fund

Janice Boyd Fund  
 Florence B. Brainard Fund  
 Lyman B. and Judith P. Brainerd Fund  
 Neville K. Brecker and Raymond W. Brecker Memorial Fund  
 Richard M. Brett Fund  
 Rae H. Brewster Fund  
 John and Sondra Brittain Fund  
 Stillman B. and Joan E. Brown Fund  
 Paul R. Buchanan Fund  
 Richard B. Bulkeley Fund  
 Col. William E. A. Bulkeley Fund (From Mrs. Bulkeley)  
 William H. Bulkeley Fund  
 Alexander Bunce Fund  
 Dr. and Mrs. James M. Bunce Fund  
 Clifford and Joan Burdge Fund  
 George L. and Helen C. Burnham Fund  
 Mabel A. Burnham Fund  
 Angie L. Burr Fund  
 Lena A. Burwell Fund  
 Helen W. Bush Fund  
 Robert P. Butler Fund  
 Paul M. Butterworth Fund  
 John Byrne Fund

## C

John L. Cadwell Trust Fund  
 Marjorie S. Caldwell Fund  
 Laura G. and Paul E. Callanan Fund  
 Thomas F. and Mary A. Cannon Fund  
 George C. Capen and Elizabeth Beach Capen Trust  
 George and Elizabeth Beach Capen Fund  
 Eleanor and Jerome Caplan Fund  
 Robert E. and Anne H. Carroll Fund  
 Cartin Family Foundation Fund  
 John R. Cates Fund

Marion H. Chaffee Fund #2  
 Chapman Family Fund  
 Wesley I. Charter Fund  
 Warren D. Chase Fund  
 Pamela Churchill Fund  
 Mabel H. P. Clark Trust No. 1  
 Anne Hatheway Clarke Fund  
 Ruth S. Cloyes Trust  
 Ralph J. Cocks Fund  
 Mary C. H. Coffin Fund  
 Mary C. Cofran Trust  
 Adam P. and Cynthia F. Cohen Fund  
 Minnie Finesilver Cohn and Meyer Cohn Fund  
 Florence H. and J. Donald Cohon Fund  
 Robert L. and Sara Marcy Cole Fund  
 Elizabeth Jones and H. Bacon Collamore, Jr. Fund  
 Anne A. Conklin Fund  
 Edward K. Conklin Fund  
 Frances F. Connelly Fund  
 Frankie and Bill Connelly Fund  
 Mary Jane Converse Fund  
 John R. Cook Trust  
 Mildred E. Cook Fund  
 Charles P. Cooley, Jr. Fund  
 Patricia L. Coombs Fund  
 Mildred A. Cooper Fund  
 William Sheffield Cowles Fund  
 H. Carl and Ruth Law Cramer Fund  
 Barbara M. Crampton Fund  
 J. Noyes Crary Fund  
 CRE Investors Fund  
 Mary Gay Creedon Fund  
 Wilbur B. and Margaret G. Crimmin Fund  
 Evelyn L. Crosby Fund 1  
 Evelyn L. Crosby Fund II  
 James and Marianne Crowley Fund  
 Lillys Crygier Fund

Paul B. and Elsa N. Cullen Fund  
 Peter Culver Fund  
 Joseph W. Cunningham, Jr. Fund  
 Caroline E. Currie Fund  
 Louise Cogswell Cushman Fund

## D

James S. and Lois A. Dailey Fund  
 John Dangas Fund  
 Morton and Dinah Danseyar Family Foundation  
 J. H. Kelso and Edith Brainard Davis Fund  
 John M. K. Davis & Mignon Foerderer Davis Fund I  
 John M. K. Davis & Mignon Foerderer Davis Fund II  
 Raymond H. Deck Family Fund in Memory of Kevin F. Deck  
 Charles W. Deeds Fund  
 Donald K. Deitch Fund  
 Caroline De Lamater Fund  
 V. Edward Dent and Donald Blust Memorial Fund  
 Quentin A. Dewing Fund  
 Walter H. Dickman Fund  
 Alice and Harold Dillon Fund  
 Dorothy Godfrey Dillon Fund in memory of her mother, Nathana P. Godfrey  
 Elizabeth Dimick Fund  
 Lucille A. Diorio Fund  
 Dr. and Mrs. Burwell Dodd Fund  
 Thomas K. Dodd Fund  
 John and Barbara Donahue Fund  
 John and Barbara Donahue Fund II  
 Richard D. Donchian Fund  
 Dornenburg Design Christmas Gift Fund  
 George A. Driew Fund

## E

Beverly Beach Eaton and Edward C. Eaton, III Fund  
 Bernard and Millie G. Ellovich Fund  
 Arthur C. Ellsworth Fund

John E. and Grace Ellsworth Fund  
 Jean Sheldon Elmers Fund  
 Morton and Marilyn Elsner Fund  
 John O. and Harriet Enders Memorial Fund  
 James F. and Isabelle S. C. English Fund  
 Joseph R. and Mary P. Ensign Memorial Fund

## F

Guy B. and Rita B. Fallow Fund  
 Victor Fassler Fund  
 Jack B. and Jessie L. Feeney Fund  
 Eleanor Ferguson Fund  
 Filer Fund  
 Gustave Fischer and Lillian A. Fischer Fund  
 Gustave and Lillian A. Fischer Fund  
 Lillian A. Fischer Fund  
 Eugene R. and Sandra Flaxman Fund  
 Grace M. Flynn Fund  
 T. Mitchell Ford Fund  
 Debra and Ed Forand Family Fund  
 Henry D. Fowler Fund  
 Mary M. Fowler Fund  
 Melicent Rawson Fuller Fund

## G

George H. Gabriel Fund  
 D. Stephen and Phyllis K. Gaffney Fund  
 Dr. Edythe and Mr. Albert Gaines Fund  
 Marilda Gándara Fund  
 John S. Garvan Fund  
 Richard and Joanne Gates Fund  
 Gavin Family Fund  
 Donald S. Gershman Family Fund  
 Arthur C. Getchell Fund  
 Raymond A. Gibson Fund  
 E.C. Gilkeson Fund  
 George H. Gilman, Jr. Fund

Irving L. Gilman Family Charitable Foundation Fund  
 Rita Ginsberg Fund  
 Miriam E. and Leon H. Glazer Fund #2  
 William E. and Jacquelyn M. T. Glynn Fund  
 Godbout Family Foundation Fund  
 Steven and Blanche Goldenberg Family Fund  
 Arnold and Julian Goldstein Fund  
 Clara M. Goodman Estate Fund  
 Goodman/Loeb Family Fund  
 Mary A. Goodman Fund  
 Mary Goodwin Fund  
 Genevieve H. and James L. Goodwin Fund  
 Richard H. Gordon and the Gordon Family Fund  
 Mildred B. Grady Fund  
 Louis Graham Fund  
 Pearl M. Grandy Fund  
 Eugenie and Charles Granniss Fund 1  
 Eugenie and Charles Granniss Fund 2  
 Margaret G. Grant Fund  
 Dorothy Yeomans Grauly Fund  
 Virginia Stuart Gray Fund  
 William G. Gray Fund  
 Beverly and Arnold C. Greenberg Fund  
 Jacob Herman Greenberg Fund  
 Anna M. Greenspon Memorial Fund (from Charles Greenspon)  
 Shirley S. Greenspon Fund  
 Elizabeth N. Gregory Fund  
 Helen Griffith Fund  
 Jane Z. Griggs Fund  
 Raymond W. and Cleo C. Grinold Fund  
 F. Louise Griswold Fund  
 Cornelia Gross Fund  
 Robert E. and Barbara W. Groundwater Fund  
 Robinson A. and Nancy D. Grover Fund



## H

William P. Haas Fund II  
 James and Florence Gertrude Haddow Fund  
 Jessie J. Haight Fund  
 Edith S. Hale Fund  
 Luella C. Hale Fund  
 Joseph T. Hall Fund  
 Robert C. Hall Fund  
 Charles H. Hamlin, M.D. Fund  
 Carlotta Hammitt Fund  
 Anna Hammons Fund  
 Alice A. Harder and Harriett S. Olzendam Fund  
 Samuel C. Hardin Fund  
 J. Warren Harper Fund  
 Marion K. Harris Fund  
 Dr. Nathan Harris Fund  
 Harold L. Hart and Ethel B. Hart Foundation Fund  
 John R. Hart and Pauline Davidson Hart Fund  
 Hart-Coggeshall Fund  
 Hartford Foundation General Endowment Fund  
 Hartman-Newfield Tobacco Company Fund  
 Virgil L. Hartzog Fund  
 David M. Hatheway Fund  
 Elizabeth C. Hatheway Fund  
 Nathan Haverback Fund  
 Charles L. Heath Trust  
 Joyce S. Heckman Fund  
 Sue W. and Robert C. Hector Fund  
 Warren C. Heidel Fund  
 Frances S. Hennessy Fund  
 Mary B. Hewes Fund  
 Madelyn C. Hickmott Fund  
 Elizabeth S. Hicks Fund  
 Virginia Hicks Fund  
 Dr. Otto M. Hirschfeld Fund  
 Earl W. Hodge Fund  
 Mary G. H. Hoffer Fund  
 Dwight A. Hogg Fund  
 Elizabeth Glass Hoke Fund

Benjamin L. Holland Fund  
 Alice F. Holmes Fund  
 Margaret E. Honan Fund  
 H. Mansfield Horner Fund  
 Latham B. and Elizabeth H. Howard Fund  
 Barbara A. and Elijah K. Hubbard Fund  
 Mary A. Huber Fund  
 Richard L. and Virginia W. Hughes Fund  
 Charles A. Hunter Trust  
 Leila C. Hunter Trust  
 William Hunter Fund  
 R. Eric and Winifred Hutchinson Family Fund  
 Elizabeth Huntting Fund

## I

John Avery and Elinor Houghton Bulkeley Ingersoll Fund

## J

Warren E. Jackson and Jewell C. Jackson Fund  
 Harry Jacobs Fund  
 Katharine Jacobus Fund  
 Ann M. Jainsen Fund II  
 Ann M. Jainsen Fund III  
 Carl W. and Julia Jainsen Memorial Fund  
 Wilson and Ann Jainsen Fund  
 Alexander & Alice C. Jarvis Fund  
 Dr. and Mrs. H. Gildersleeve Jarvis Fund  
 Mary Goodrich Jenson Fund  
 James Jewett Fund  
 Bertram A. Johnson Fund  
 Blanche W. Johnson Fund  
 Claire Q. and Herbert Johnson Fund  
 Katharine N. Johnson Fund  
 Lillian A. Johnson Fund  
 Mabel Johnson Fund  
 Grace D. Joley Fund

## K

Sheldon J. Kahn Fund  
 Harry G. and Fannie S. Kaminsky Fund  
 Ann M. Kane Fund  
 William Kashman and Inez P. Kashman Fund  
 Veronica K. and John P. Kazlau Memorial Fund  
 Louise E. Keister Trust  
 Linda J. Kelly Family Fund  
 Edward H. Kenyon Fund  
 Mathilde T. Kingsland Fund  
 Eva Kleman Fund  
 George Kleman Fund  
 Louise J. Klett Fund  
 Robert C. Knox, Jr. Fund  
 Susan Schiro Kominsky Fund  
 Doris and Simon Konover Fund  
 Koopman Fund  
 Marion L. Kropp Fund  
 Theodore C. and Marie J. Kyle Fund

## L

The Elizabeth M. Landon and Harriette M. Landon Fund  
 Doris E. Larson Fund  
 Betty and John Larus Fund  
 Ethel T. Larus Fund  
 H. Warren Lawrence Fund  
 Janet S. Legrow Fund  
 Sarah W. Leibert Fund (from her son, Herbert A.)  
 Dorothy H. Leppens Fund  
 Robert P. Letendre Fund  
 Suzanne M. and George Levine Fund  
 Frederick Elbert Lewis Family Fund  
 Robert Lienhard Fund  
 Boardman F. Lockwood Fund  
 Gertrude G. Lofgren Fund  
 Bruce and Molly O'Neill Loudon Fund  
 Jessie F. Lovell Fund No. 2

Jean Allen Day Lowry  
Memorial Fund  
Lawrence J. Lunden Fund  
Lux Bond & Green Fund  
Lyon Fund

M

Genevieve MacKenzie Fund  
Edward L. and Audrey B.  
Mahl Fund  
Lottie M. Mahl Estate Fund  
Louise A. Mahl Fund  
Morris and Edith Mancoll Fund  
Alfred G. Mason Fund  
Marks Family Fund  
Roy S. Mason Fund  
Sidney J. Mass Fund  
Mary Massa Trust  
Harriet K. Maxwell Fund II  
Alice A. McCurry Fund  
Julia K. McGovern Fund  
Henry R. and Katharine K.  
McLane Fund  
John F. McLaughlin Fund  
Helen L. McManus Estate Fund  
MCW Fund for Women  
and Children  
Helen H. Meade Fund  
Gertrude M. Meller Fund  
Peggy and Alan Mendelson Fund  
Grace O. and Harold A.  
Merriman Fund  
Morrow Family Fund  
Message Center Beepers Fund  
The MGN Fund  
Stephen and Patricia  
Middlebrook Fund II  
Frances Thayer Miller Fund  
Frederick L. Mitchell Fund  
Margaret Sage Mitchell  
Estate Fund  
Robert and Adriana  
Mnuchin Fund  
Samuel E. Molod Family Fund  
Caroline V. Moran Memorial Fund

Paul W. Morency Fund  
Shirley M. and Edward H.  
Morgan Fund II  
Russell C. Morley Fund  
Mr. and Mrs. Gerard H.  
Morrissey Fund  
Mary T. Morton Fund  
W. Howie Muir Fund  
William M. Mulford Fund  
Chester H. Munson Fund  
J. Read and Barbara H.  
Murphy Fund  
Mr. and Mrs. John S.  
Murtha Fund

N

Reba and Arthur Nassau Fund  
Arlene and Daniel Neiditz Fund  
David H. Neiditz Memorial Fund  
Moses J. and Rachel Neiditz Fund  
Arnold W. Nelson, Barbara O.  
Nelson and June Billingham  
Nelson Fund  
D. Robert and Elizabeth  
Newell Fund  
Jon O. and Martha S.  
Newman Fund  
Seymore and Ann  
Newman Memorial Fund  
Germain D. and Patricia L.  
Newton Fund  
Nutmeg Foundation Fund,  
to honor John M. K. Davis  
Alfred G. Nye Fund

O

Elisabeth R. Ohde Fund  
William J. and Marcia H.  
Olsson Fund

P

Kathleen Palm and Joseph  
Devine Fund  
Bradford E. Parker Fund  
Dorothy E. W. and James R.  
Parker Fund  
Philip Partington Fund

Wyman G. and Virginia Patten  
Pearse Family Fund  
Edwin L. Pearson Fund  
Grace S. Peck Fund  
Edith Chester Pelton Fund  
Brewster B. and Judith  
Perkins Fund  
Col. Harry L. Perkins Fund  
Neil H. Pfanstiel Fund  
Judson T. Sr. and Virginia C.  
Pierson Fund  
Katharine A. Pinney Fund  
Rollin G. Plumb Fund  
Pomeroy Day Fund  
Barbara P. Poppe and Harry B.  
Poppe Memorial Fund  
Kimberly Ann Porter Fund  
William H. Porter Fund  
Barbara B. Preston Fund  
James D. Price Fund  
Clarence L. Prickett Fund  
Herbert J. Prouty Fund  
Millard and Claire Pryor Fund

R

Dorothy L. Rainford  
Memorial Fund  
Arthur and Ann Randall Fund  
Nancy Taft Rankin Fund  
Edward Raphael, Esther  
and Nathan Kleinman Fund  
(from Minnie K. Raphael)  
Richard B. Redfield  
Memorial Fund  
J. Ronald Regnier Fund  
Joseph F. Reheiser Fund  
Louise F. Reheiser Fund  
I. William Reisman and  
Beatrice W. Reisman Fund  
Julia S. Reynolds Fund  
Harvey B. and Carrie W.  
Riggs Fund  
Gail Ripley Fund  
Mabel G. and Agnes Ripley Fund  
The RMB Fund  
Rev. Philip W. Roberts Fund

Victor and Emma  
Robington Fund

Caroline and John  
Rohrbach Fund

Patty Levaur Rome Fund

Edgar L. Ropkins Fund

R. Philip and Rebecca C.  
Rose Fund

Frances F. Ross Fund

Olive L. Rudolph Fund

Dorothy Mason Russell Fund

Peter G. and Betsy Russell Fund

William C. Russell Fund

**S**

Robert Salter, Jr. Fund

Fan Fox Samuels (from Mr. and  
Mrs. Richard Koopman) Fund

Fan Fox Samuels (from Mr. and  
Mrs. Bernard Schiro) Fund

Sappington Schoen Family Fund

Frank J. and Hilda Saunders Fund

Arthur and Hope E.  
Scattergood Fund

Andrew M. Schatz and  
Barbara F. Wolf Fund

Ruth and Walter Schloss Fund

Isidore Schnap Fund

Lodewyk A. and Annie R.  
Schryver Fund

Sidney Schulman Fund

Robert H. Schutz, Jr. Fund

Pauline H. Schwind Fund

Walter K. Schwinn Fund

William N. and Virginia C.  
Seery Fund

Seidman Family Fund

Lily Selitzky Fund

Norma and Natale Sestero Fund II

Thomas A. and Ann Hayes  
Shannon Family Memorial Fund

Sharpless Family Fund

Henrietta T. Shaw Fund

Catherine Sullivan Shay and  
William Desmond Shay Fund

Andrew Roy Sheketoff  
Memorial Fund

Lewis and Sylvia Sheketoff Fund

Harry A. Shindler Fund

Jessie A. Shipman Fund

Lester E. Shippee Fund

Debra J. Shulansky Family Fund

Ralph M. and Ruth K.  
Shulansky Fund

The Shulansky Foundation Fund

Joseph L. Shulman Fund

Georgia H. Silliman Fund

Rabbi Morris and Althea O.  
Silverman Fund

Robert Siskin Family Fund

Siskin Family Fund

Mollie Slade Fund

James B. and Julie Hovey  
Slimmon, Jr. Fund I

Eleanor Carter Sloan Fund

Kathleen V. and William H.  
Smiley Fund

Douglas Tracy Smith and  
Dorothy Potter Smith Fund

Grace Fitts Smith Fund

Julie E. Smith Fund, in  
memory of her family

Sarah Conklin Smith Fund

Winchell Smith Fund

Smyth Manufacturing  
Company Fund

Abraham and Lina Solomon Fund

Philip and Dora Sondik Fund

Jenny L. Spargo Fund

Ruth L. Spaulding Fund

Howard and Mary Alice  
Spencer Fund

Henry M. and Ilse W.  
Spiegel Fund

Mary Baker Stanley Fund

Talcott and Nina Stanley Fund

Wilbur C. Stauble Fund

M. V. and Lucinda S. Stempf Fund

Mary Holden Stephenson Fund

John W. Steube Fund

Elizabeth K. Steven Fund

Edward J. and Marilyn D.  
Stockton Fund

Mr. and Mrs. Lyndes B.  
Stone Fund

Samuel M. Stone Fund

Leslie M. Stophel and  
Douglas J. Myers Fund

John D. Stout, Jr. Memorial Fund

Matilda and Beatrice  
Sudarsky Fund

Suisman Foundation, Inc. Fund

Edward A. and Etta W.  
Suisman Fund

Janet and Michael Suisman  
Fund - C

Janet and Michael Suisman  
Fund - T

Michael and Elsa Daspin  
Suisman Fund

Samuel C. and Helen K.  
Suisman Memorial Fund

Samuel Suisman and  
Edward A. Suisman Fund

Melinda and Paul Sullivan Fund

Reynold F. and Sylvia N.  
Svensk Memorial Fund

Doris S. Swift Fund

**T**

Russell P. Taber Fund

Nelson Taintor, Jr. and  
Virginia Taintor Fund

Carolyn Talcott Fund

Jack D. and Ruth H. Taylor Fund

James and Edith D. Taylor  
Charitable Foundation  
(In honor of J.M.K. Davis)

Mrs. J. Moulton (Antoinette)  
Thomas Fund

Arnold P. and Betty Jeanne  
Thompson Fund

Julia Spencer Thrall Fund

Melvin Weisman Title Fund

James H. and Hetty B.  
Torrey Fund

Henry P. and Margaret E.  
Townsend Fund

Leonard M. Troub  
Endowment Fund  
Joseph P. Trumbull Trust Fund  
Charles A. and Ruth H.  
Tucker Fund  
George G. Twitchell Fund

V

Mrs. Kingsland Van Winkle Fund  
David, Ellie and Jim  
Venneman Family Fund  
Boo, Brett, Martha (Beale),  
and Wade Vianney Fund  
Edmond R. and Audrey M.  
(Svensk) Vianney Fund  
Bernard S. Vinick Fund  
Vitamaur Fund

W

Wagoner Family Fund  
Mary E. Q. Walberg Fund  
Henry H. Walkley Fund  
Dorothy H. Warner Fund  
Edgar Francis Waterman Fund  
Frederick D. and Katherine W.  
Watkins Family Fund  
Mr. and Mrs. Stuart Watson Fund  
Judith A. W. Wawro Fund  
Helen Lyde Wayne Fund

Katharine Howes Wead Fund  
Arthur E. and Elizabeth H.  
Webster Trust 1  
Arthur E. and Elizabeth H.  
Webster Trust 2  
Weed Family Fund  
Oscar Wegman Trust  
Oscar and Ruby T.  
Wegman Fund II  
Fannie and Louis Weinstein  
Fund (from their daughter,  
Mrs. Pauline Kopelman)  
Milton and Frances  
Weinstein Fund  
Jacqueline and Frederic  
Werner Fund  
Richard G. West Fund  
Stillman F. Westbrook Fund  
Edward J. Whalen Fund  
Mary Pomeroy Wheeler Fund  
Doris E. Whitbeck Fund  
Arthur J. White Fund  
Charles and Mildred White Fund  
Dorothy D. Whitney  
(Mrs. Howard F.) Fund  
Gladys and Theodore  
Wielandt Fund  
Wilson and Joanne Wilde Fund  
Frazer B. and Barbara T.  
Wilde Fund  
Charlotte E. Wile Fund

Edward C. and Mary W.  
Wilkins Fund  
Frances Williams Fund  
Frank O. H. Williams Fund  
Joan Bergmann Wilson Fund  
Muriel and Gordon Wilson Fund  
Mr. and Mrs. John K.  
Winter Fund  
W. Watson Woodford Fund  
Archibald M. Woodruff, Jr.  
Fund (given by his wife  
Barbara B. Woodruff)  
Charles J. Woods Fund  
Mary Paine Worthen Fund  
Catherine Maus Wright Fund  
Father Paul Wysocki  
and Family Fund No. 2

Y

Clinton B. Yeomans Fund  
Elsie B. Yeomans Trust

Z

Henry M. Zachs and  
Judith M. Zachs Fund  
Opal Marie Zimmerman  
Memorial Fund (from  
her husband Charles)  
Joseph Zisk Fund



▲ Joel Roskin (left) and his partner, Max Otero, November 2019.

**The Hartford Foundation mourns the loss of Joel Roskin, who passed away in March 2021.** As advisor to the Samuel Roskin Trust, Joel thoughtfully directed more than \$6 million in support for basic human needs and Jewish causes throughout Greater Hartford since 1974.

Over the past decade, Joel has supported LGBTQ organizations, with a specific focus on youth and their families. In 2018, Joel established The Equality Fund to support individuals of diverse sexual orientations, gender identities, and gender expressions. To accomplish this, the Fund provides direct assistance and services for individuals of all ages and families, targeting key areas, such as basic human needs, education, elder services, health, and employment to improve their quality of life.



**FIELD OF INTEREST FUNDS**

Acacia Zawadi Fund  
 Lee and Margot Allison Fund  
 Curtis H. and Katharine G. Alvord Fund  
 Andover Greater Together Community Fund  
 Anonymous (CF25) Fund  
 Anonymous No. 14 Fund  
 Anonymous No. 7 Fund  
 Raymond H. Arnold Fund  
 Avon Greater Together Community Fund  
 JoAnne Bauer and Friends Fund  
 Beatman-Cantarow Fund in Memory of Dr. Walter D. Cantarow  
 Lilly Palmer Biscoe and Eloise Palmer Biscoe Mother/Daughter Fund in Memory of Earl Biscoe, Jr. and Earl Biscoe III  
 Black Giving Circle Fund  
 John E. Blair Fund for the Visually Impaired  
 Bloomfield Greater Together Community Fund  
 Bolton Greater Together Community Fund  
 Boyle Family Fund  
 Newton C. and Elsie B. Brainard Fund  
 Donald Brewer Memorial Fund  
 John W. Buck Fund  
 Antonio S. and Sarina Camilleri Memorial Fund  
 Canton Greater Together Community Fund  
 Carroll Family Fund  
 Grace D. Cassell Fund  
 Catalyst Endowment Fund  
 CHA Community Fund  
 Timothy K. Chartier, MD Fund  
 Connecticut Opera Endowment Fund  
 John David Creedon Fund  
 Vinel Edward Dent Memorial Fund

Teresa and Carmela D'Esopo Fund  
 Dorothea Fund  
 Carl J. DuPre Fund  
 East Granby Greater Together Community Fund  
 East Hartford Greater Together Community Fund  
 East Windsor Greater Together Community Fund  
 Ellington Greater Together Community Fund  
 Elliot Family Fund  
 Enfield Greater Together Community Fund  
 The Equality Fund  
 The Equistrides Fund  
 Family Service Society Fund  
 Fanny Mag Fassler and Victor Fassler Fund  
 Farmington Greater Together Community Fund  
 William and Estelle Fraidowitz Family Fund  
 David L. Francis and Sarah W. Francis Fund  
 Stanley and Jean Frank Fund  
 Raymond S. and Agnes M. French Memorial  
 Anna Sanders Friedman Fund  
 Fund for Early Childhood  
 Valyn Gallivan Fund  
 Glastonbury Greater Together Community Fund  
 Granby Greater Together Community Fund  
 Greater Hartford Architecture Conservancy  
 Nicholas J. and Doris Giordano Endowment Fund  
 Fannie Estelle Hairston Fund  
 Hartford Foundation Staff Fund  
 Hartford Greater Together Community Fund  
 Marjorie F. Hazen Trust  
 Hebron Greater Together Community Fund

HFPG Promotion of Philanthropy Fund  
 Astrid and Fred Hanzalek Fund 1  
 Astrid and Fred Hanzalek Fund II  
 Carol Simpson and Bob Hewey Fund  
 Alyce F. and David H. Hild Fund  
 Isabel Hooker Merritt, Thomas Hooker, and Joseph K. Hooker Trust  
 Howard and Bush Fund for Philanthropy  
 Frank Kavitsky Fund No. 1  
 Robert Allan Keeney Memorial Fund  
 Ruth Kellogg Fund  
 Muriel R. Kesten Family Fund for Public Education  
 Koopman Field of Interest Fund  
 Jeri P. Kostiner Fund  
 Latino Endowment Fund  
 Mary J. Lee Fund  
 Thomas H. Lorch and Hollace Peterson Lorch Fund  
 Jessie F. Lovell Fund No.1  
 Madoff Family Fund in Memory of Emily Madoff  
 Marlborough Greater Together Community Fund  
 Manchester Greater Together Community Fund  
 Gioconda B. McGettigan Fund  
 Francis J. and Agnes C. Muccio Fund  
 Municipal Art Society Fund  
 Daniel W. Murphy Fund  
 Edith W. and John Davis Murphy Fund  
 Leo and Sarah Nadelman Fund  
 Muriel B. Neall Fund  
 D. Robert and Elizabeth Newell Fund  
 Newington Greater Together Community Fund  
 Glenn Thomas Packard Memorial Fund  
 Doris M. Penndorf Literacy Advancement Fund

Daniel Clark Perkins Fund  
R and C B Foundation  
Cora Lee Bentley Radcliffe and  
William Radcliffe Memorial Fund  
Bruce and Dorothy B. Ralston  
Field of Interest Fund  
Emily W. Rankin Fund  
Sali Godard Riege Fund  
Rocky Hill Greater Together  
Community Fund  
Vernon D. Roosa and  
Florence E. Roosa Fund  
H. Louise Ruddell Charitable Fund  
Anna and Abraham I. Savin Fund  
Scan-Optics, Inc. Fund  
Schwedel Family Fund  
Ted and Ellen See Fund  
Natale and Norma Sestero Fund  
Norma and Natale Sestero Fund I  
Simsbury Greater Together  
Community Fund  
Carol Simpson and Bob  
Hewey Fund  
Slimmon Fund for Arts Education  
The Olcott Damon Smith Fund  
Somers Greater Together  
Community Fund  
South Windsor Greater  
Together Community Fund  
Margaret E. Spellacy Fund  
The Spencer Turbine  
Foundation Fund  
Prasad Srinivasan Family Fund  
Skip Steiner Fund  
Edith S. Steinhauser Fund  
Virginia D. Stoner Fund  
Suffield Greater Together  
Community Fund  
Adelaide L. Thomson Fund  
A. Lindsay Thomson Fund  
Emily B. Thomson Fund  
James McA. Thomson Fund  
John Talcott Whitman and  
Louise H. Whitman Fund  
Tolland Greater Together  
Community Fund  
Priscilla M. Usher Fund  
Vernon Greater Together  
Community Fund  
West Hartford Greater  
Together Community Fund  
Wethersfield Greater  
Together Community Fund  
White Oak Fund  
Windsor Greater Together  
Community Fund  
Windsor Locks Greater  
Together Community Fund  
Woman's Exchange of  
West Hartford Fund

## FOUNDATION LEADERSHIP

Our legacy is shaped by of our community's leaders. We are grateful to all who have served to move us forward together.

### THE ORIGINAL BOARD

Charles A. Goodwin	1936-54   Chair, 1936-54	Lawrence A. Howard	1948-1951
J. M. K. Davis	1936-71   Chair, 1955-69	Mark F. Korber	1999-2008 Chair, 2005-08
Earle Dimon	1936-54	Hartzel Z. Lebed	1981-85
Mrs. Herbert Fisher	1936-54	George Levine	1984-93
Spencer Gross	1936-69	Bonnie J. Malley	2006-15
Henry J. Marks	1936-47	Thomas M. Malloy	2002-06
Mrs. Bernard T. Williams	1936-48	Albert Marks, Sr.	1947-65

### OTHER BOARD MEMBERS

Frederick G. Adams	1981-90   Chair, 1987-90	I. Charles Mathews	2019 - 2020
Lucian E. Baldwin	1967-76   Chair, 1970-75	Yvette Meléndez	2005-17   Chair, 2014-16
David M. Borden	2007-16	Stephen B. Middlebrook	1997-2006
Maxwell M. Belding	1972-81	Thea Montañez	2015
Francisco L. Borges	1999-2009	Robert K. Mooney	1973-82
Maria Borrero	1988-91	John S. Murtha	1977-86   Chair, 1983-86
John C. Brittain	1995-99	Jon O. Newman	1986-95
Mrs. Paul Callanan	1955-69	Elsa M. Núñez	2016-17
William P. Conklin	1956-73	Lillian Ortiz	2003-05
Paul Copes	1991-94	Brewster B. Perkins	1985-98   Chair, 1997-98
James A. Crowley	1994-2000	Ellen Ash Peters	1997-2001
George Day	1954-66	JoAnn H. Price	2010-2019 Chair, 2017-2019
James F. English, Jr.	1985-96   Chair, 1991-96	Nancy T. Rankin	1993-2002
Edward J. Forand Jr.	2000-13   Chair, 2011-13	John C. Reagan	1983-84
William E. Glynn	1969-83   Chair, 1979-82	Lewis J. Robinson, Jr.	2003-10   Chair, 2009-10
Blanche S. Goldenberg	1996-2005 Chair, 1999-2002	Rosaida Morales Rosario	1991-2002
Robert B. Goldfarb	2007-16	Susan J. Sappington	2009-12
Delores Graham	1976-80	Herbert P. Schoen	1982-85
Beverly P. Greenberg	2005-14	Gordon Scott	2016-2018
R. Nelson Griebel	2016-17	Sue Ann Shay, s.n.d.	1987-96
Miss Cornelia Gross	1970-83	Lester Shippee	1951-56
Nancy D. Grover	1997-2004 Chair, 2003-04	Lyndes B. Stone	1961-75
Benjamin Holland	1954-61	Michael Suisman	1966-79   Chair, 1976-78
		Judith S. Wawro	1983-92
		Wilson Wilde	1987-96

## COMMITTEES

In addition to the members of the Board of Directors, the Hartford Foundation is fortunate to have other volunteers who collectively contribute hundreds of hours of service and advice to help the Foundation in a number of areas. Listed here are the members of the standing subcommittees of the Board of Directors and special committees.

### ADMINISTRATION

*Nancy P. Bernstein\**, Chair  
Rodney O. Powell\*  
Theodore S. Sergi\*~  
Andrew R. Worthington\*

### AUDIT

*Estela R. López\**, Chair  
Richard N. Palmer\*  
Theodore S. Sergi\*

### DEVELOPMENT

*Andrew R. Worthington\**, Chair  
Nancy P. Bernstein\*  
Estela R. López\*  
Theodore S. Sergi\*  
Robert B. Goldfarb  
JoAnn H. Price

### FINANCE

*Mark Overmyer-Velázquez\**,  
Chair  
Rodney O. Powell\*  
David M. Roth\*  
Theodore S. Sergi\*~  
Andrew R. Worthington\*

### GOVERNANCE

*Richard N. Palmer\**, Chair  
Nancy P. Bernstein\*  
Min Jung Kim\*  
Estela R. López\*  
Theodore S. Sergi\*~

### HFPG IMPACT!

*Marlene M. Ibsen\**, Chair  
Robert B. Goldfarb  
Alan Mattamana  
Nicole Porter\*

### INVESTMENT

*David M. Roth\**, Chair  
Theodore S. Sergi\*  
Robert B. Goldfarb  
David Marks  
Carl Peterson  
Cynthia Steer  
John Wright

### POLICY AND STRATEGY

*Rodney O. Powell\**, Chair  
Marlene M. Ibsen\*  
Min Jung Kim\*  
Mark Overmyer-Velázquez\*  
Nicole Porter\*  
Theodore S. Sergi\*~

### BRAINARD FUND ADVISORY

*Richard N. Palmer\**, Chair  
Nancy P. Bernstein\*  
Kenneth R. Alleyne  
Ellen Andrews  
James Cox-Chapman  
Lucy Cox-Chapman Dagneau  
Lynne Garner

### BLACK GIVING CIRCLE FUND STEERING

*Christopher Cloud*, Chair  
Kristen Clark  
Brenda DelGado  
Nakia Hill  
Katonya Hughey  
Robert Ike  
Bradford Meachum  
Wanda Williams McCormack

### CATALYST

### ENDOWMENT

### FUND STEERING

*Terry Schmitt*, Chair  
*Amanda Aronson*, Vice Chair  
Iris Bashkin  
Francine Christiansen~  
Kathleen Costello~  
Carol Dupuis  
Wendy Haller  
Leslie Ohta  
Amy Peltier  
Carol Peltier  
Ed Peltier  
Renee Savoie  
Ned Steiger  
Ann Thomas  
Bob White~  
Kathy Worthington

### LATINO ENDOWMENT FUND STEERING

*Jorge Casanovas*, Chair  
*Moraima Gutiérrez*, Co-Chair  
Thomas Blake  
Delpha J. DiGiacomo  
Barbara Fernandez  
Christina Gonzalez Gellman  
Evelyn LaFontaine  
Rosaida Morales Rosario  
Rita Ortiz  
Ilka D. Torres

### BOARD OF AMBASSADORS

*Andrew R. Worthington\**, Chair  
Kenneth R. Alleyne  
Amanda Aronson  
Scott Aronson  
Francine Austin  
Malcom F. Barlow  
Stephen Bayer



Shaun Biggers Alleyne  
 Richard Brown  
 John F. Byrnes  
 Marla J. Byrnes  
 Ellie Caplan  
 Francine Christiansen  
 Christopher Cloud  
 Adam P. Cohen  
 Britt-Marie K. Cole-Johnson  
 Eric D. Daniels  
 Mishone Donelson  
 Tiffany Donelson  
 Earl Exum  
 Thomas J. Filomeno  
 Robert B. Goldfarb  
 Beverly Greenberg  
 John Green  
 Rashid Hamid  
 Stacy Hurley-Cloud  
 Jill J. Hutensky  
 Lenworth M. Jacobs  
 Edward S. Jason, Jr.  
 David R. Jimenez  
 Dinesh Kapur  
 Rosy Kapur  
 Charlotte Kinlock  
 Steven C. Kleinman  
 Deborah Kleinman  
 Evelyn LaFontaine  
 Antoinette Lazarus  
 Thomas D. Lips  
 Alan Mattamana  
 Adam McLaughlin  
 John H. Motley  
 Joelle Murchison  
 Moy N. Ogilvie  
 Cheryl A. O'Meara  
 Michele Parrotta  
 Brewster B. Perkins  
 Tyler Polk  
 Sharon Rome Reisner  
 Susan Rottner  
 Richard Rubenstein  
 Andrew M. Schatz  
 Shana Schlossberg  
 Hy J. Schwartz  
 Paula R. Silas Guy  
 Anne Stanback  
 Cecil J. Thomas  
 Dougie Trumble  
 Tom Trumble

James R. Venneman  
 Ellie W. Venneman  
 Fred Ward  
 Wyrot Ward  
 Nancy Wheeler  
 Bob White  
 John Wright  
 Eric Zachs  
 Jessica Zachs

### PROFESSIONAL ADVISORY

*Nicholas M. Sheridan, Chair*  
 Edward D. Abdelnour  
 Steven M. Basche  
 Eliot M. Bassin  
 Patricia R. Beauregard  
 Jill H. Clark  
 Beth Duffy  
 John W. Eckel  
 Ruth Fortune  
 Crystal Germanese  
 Christiana N. Gianopulos  
 Suzanne S. Giuffrida  
 Austin S. Hersh  
 Denis M. Horrigan  
 Benjamin Kehl  
 Taylor C King  
 Simon J. Lebo  
 Ryan V. Leichsenring  
 David A. Mangs  
 Greg F. Mendoza  
 Sharon H. Purtill  
 Andrew Salak  
 Gregory J. Spuches Jr.  
 Ned Steiger  
 Timothy Throckmorton  
 Michael Welch

### SCHOLARSHIP

*Includes members  
of Interview and  
Selection Committees*

Begum Abadin  
 Gemma C. Baker  
 Y. Trevor Beauford  
 Shirley Boron  
 Nancy A. Brennan  
 Glenn A. Cassis  
 Stephan L. Christiansen

Britt-Marie K. Cole-Johnson  
 Melvyn Colón  
 Nicholas Criscitelli  
 Judith M. Dobai  
 Carol Dupuis  
 Kimberly Eadie  
 Tekisha Everette  
 Eileen Furey  
 Samuel Galloway  
 Gregory Grant  
 Robert L. Guenther  
 Moraima Gutiérrez  
 Kristen Horrigan  
 Stacy Hurley-Cloud  
 Armando Jimenez  
 Harvey Kelly  
 Thomas E. Mahoney  
 Shantel Honeyghan Mallery  
 Susan C. Myers  
 Wilfredo Nieves  
 Christine M. Pandolfe  
 Rosalie Roth  
 Nicholas M. Sheridan  
 Isaiah Torres  
 Leah N. Wade  
 Trina Williams  
 Patricia J. Wrice  
 Lawrence Young

### INVESTMENT ADVISOR

Michael Miller,  
Crewcial Partners, LLC

### COUNSEL

Robinson & Cole LLP

-----  
 \* Member of Board of Directors  
 ~ Ex-officio

## BOARD OF DIRECTORS



### **THEODORE S. SERGI, Chair**

Retired President and CEO, The Connecticut Science Center, and Retired Commissioner of Education, State of Connecticut

*Appointed by the Board of Directors, 2019*



### **RODNEY O. POWELL, Vice Chair**

Retired President, Corporate Citizenship and President, Eversource Foundation

*Appointed by the Hartford Consortium for Higher Education, 2012*



### **ANDREW R. WORTHINGTON, Treasurer**

Senior Vice President, Wealth Management, Long River Wealth Management, UBS Financial Services, Inc.

*Appointed by the Board of Directors, 2015*



### **NANCY P. BERNSTEIN**

President and Chief Operating Officer, Women's Health USA; President and Chief Executive Officer, Women's Health Connecticut

*Appointed by the Chair, United Way of Central and Northeastern Connecticut, 2013*



### **MARLENE M. IBSEN**

Vice President, Community Relations, Travelers, and CEO and President, Travelers Foundation

*Appointed by the Trustee Banks, 2017*



### **MIN JUNG KIM**

Director and CEO, New Britain Museum of American Art

*Appointed by the Board of Directors, 2020*



### **DR. ESTELA R. LÓPEZ**

Retired Interim Provost and Senior Vice President for Academic and Student Affairs Connecticut State Colleges and Universities System

*Appointed by the Board of Directors, 2019*



### **DR. MARK OVERMYER-VELÁZQUEZ**

Professor of History and Latinx Studies, and University Campus Director, UConn Hartford

*Appointed by the MetroHartford Alliance Board Chair, 2019*



### **RICHARD N. PALMER**

Retired Associate Justice, Connecticut Supreme Court

*Appointed by the Chief Justice of the Connecticut Supreme Court, 2016*



### **NICOLE PORTER**

Operations and Marketing Professional

*Appointed by the Judge of Probate Court, District of Hartford, 2021*



### **DAVID M. ROTH**

Senior Managing Partner, SouthOcean Capital Partners Inc.

*Appointed by the Board of Directors, 2018*

## OUR STAFF

Our talented and dedicated staff are passionate about Greater Hartford. They are committed to building relationships in the community that can inform and guide their work, and contribute to a shared vision for our future. Reach any of us at 860-548-1888.

### Office of the President

Julie Feidner  
Jay Williams

### Communications and Marketing

Doretta Andonucci  
Bradford Drazen  
Michaela Mendygral  
Chris Senecal  
Abigail Woodhouse  
Tom Zeleznock

### Community Impact

Yvette Bello  
Megan Burke  
Kelly Casey  
Ashley Coleman<sup>1</sup>  
Jacqueline Coleman  
Erika Frank

Elysa Gordon  
Dawn Grant  
Karen Hartenstein  
Joel Hicks-Rivera  
Susan Hills  
Betsy Johnson  
Monica Kelly  
Judy McBride  
Kate Piotrowski  
Cynthia Sanchez  
Meher Shulman  
Cierra A. Stancil  
Amy Studwell  
Tara Sundie  
Kate Szczerbacki  
Melanie Tavares  
Carmen N. Veloria  
Michael Wotorson

### Development

Chari L. Chester  
Anderson  
Francesca Borges  
Gordon  
Sarah E. Carlson  
Wanda Correa  
Susan Dana  
Pam Dawkins Pieper  
Reid DiRenzo  
Betty Ann Grady  
Jennyfer A. Holmes  
Ryan O'Halloran  
Deborah Rothstein  
Susanne M. Seney  
Kayla Rose Thomas  
Kandianna Valiotis  
Sally Weisman

### Finance and Administration

Juana Baribeau  
Tracy Bradley  
Debbie Breedlove  
LouAnn Campanello  
Diana Figueroa  
Ingrid Fullwood  
Frank Gramuglia  
Andrew Halpryn  
Susan Harmon  
Bonnie Malley  
Josephine Morrison  
Janis Peyton  
Yobielania Santana  
Rebecca Sailor  
Williams

<sup>1</sup> On fixed-term assignment with the Foundation

## We are grateful to our former colleagues.



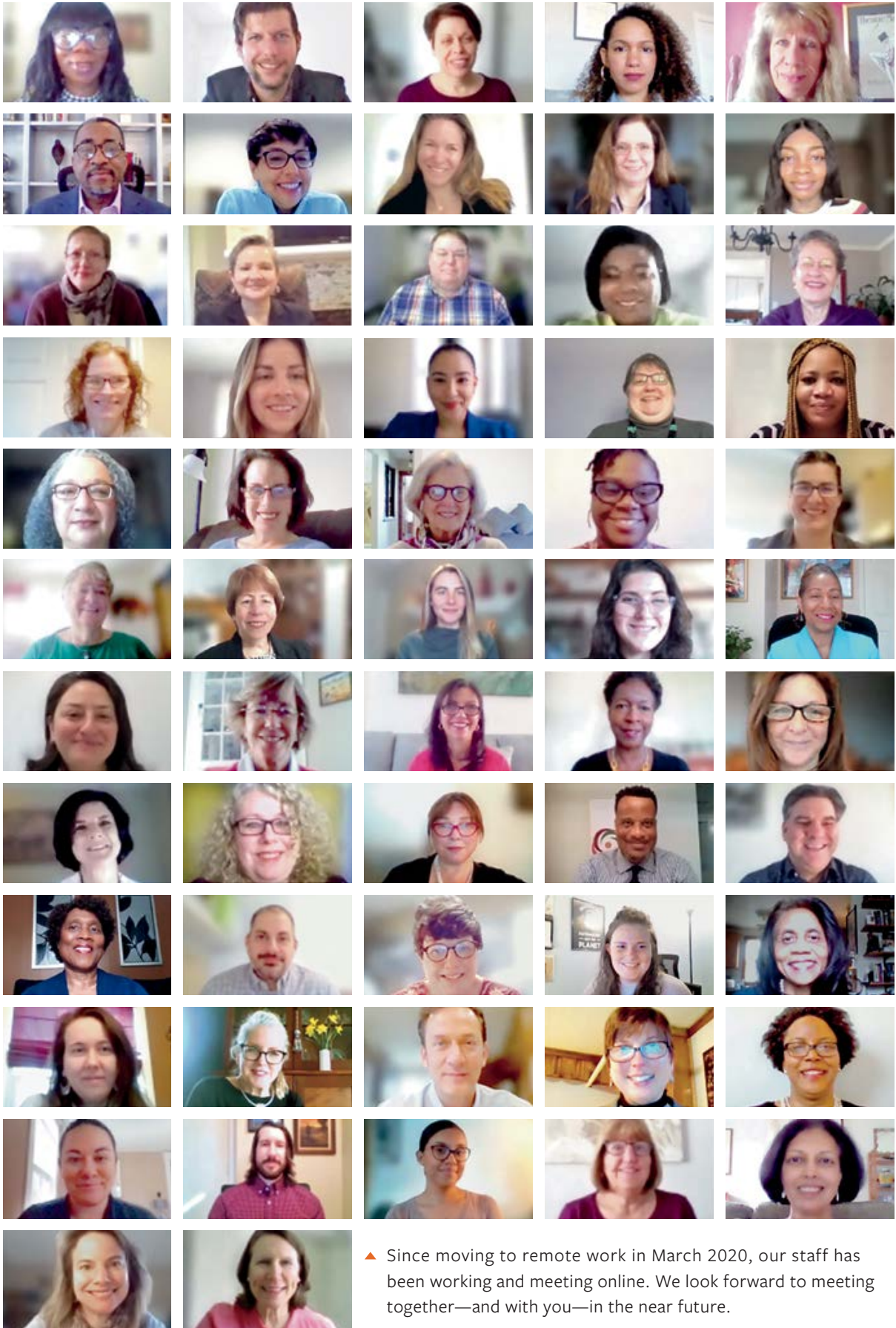
**ALISON GRANGER** ▶ After 17 years of guiding the Hartford Foundation's endowment and planned giving investments, chief investments officer Alison Granger retired from the Foundation in March 2021. During her tenure, the organization's assets grew from approximately \$550 million to more than \$1 billion. We are truly grateful for her tireless effort to ensure we have the resources to support our community in perpetuity.



**MARK NILAND** ▶ We also would like to thank Mark Niland, who has generously donated his time to the Hartford Foundation for the past five years. His professional investment expertise and good nature were appreciated by all who had the opportunity to work with him.



**In Memoriam | DICK CAVE** ▶ Dick Cave volunteered with the Hartford Foundation for 24 years after retiring from a career in the insurance industry. He was part of our NSP and Development teams, and will forever be a part of the Foundation family. Dick passed away on February 5, 2021. Our thoughts are with his family.



▲ Since moving to remote work in March 2020, our staff has been working and meeting online. We look forward to meeting together—and with you—in the near future.





### Special thanks to ▶

The individuals, families and organizations that created new funds in 2020 for sharing their stories.

### Data Sources ▶

- <sup>1</sup> DataHaven Community Wellbeing Survey, September 16, 2020
- <sup>2</sup> Kaiser Family Foundation, COVID-19 Deaths by Race/Ethnicity (as of May 3, 2021)
- <sup>3</sup> Federal Reserve Bank of New York, August 2020, Double Jeopardy: COVID-19's Concentrated Health and Wealth Effects in Black Communities

### Photo Credits ▶

- AP Photo/Jessica Hill: p19  
 Buckley Elementary School, Manchester CT: p15  
 Connecticut Headshots: p13  
 Connecticut Immigrant & Refugee Coalition: p9  
 Community Renewal Team: p11  
 CT Mirror: pages 3, 4, 5, 6, 7, 20-21, 24 & 30  
 CT News Junkie: p31 / all rights reserved  
 Defining Studios: pages 13, 25, 18, 25, 28, 29, 31, 31, 32, 34, 38, 74-75,  
 Harc: p10  
 Hartford Courant: cover, pages 2, 3, 5, 6, 8, 12, 22-23, back cover  
 Holcomb Farms: p14  
 Interval House CT: p9  
 J. Koteen Photography: p75  
 Journal Inquirer: p3  
 Kvon Photography: p8  
 La Bodeguita de Gente: p6  
 Maza Rey Photography: pages 18, 33  
 Dr. John W. Wenceslao: table of contents, p2



**Hartford  
Foundation**  
FOR PUBLIC GIVING

10 Columbus Boulevard  
8th Floor  
Hartford, CT 06106

NON PROFIT  
ORGANIZATION  
U.S. POSTAGE  
**PAID**  
HARTFORD, CT  
PERMIT NO. 1017

PLEASE MAIL TO



**JOIN US** as we work to  
dismantle systemic racism and  
build inclusive opportunity for  
all residents of our region.

The need is great. The time is now.  
We want to hear from you.

**call:** 860-548-1888  
**email:** [joinus@hfpg.org](mailto:joinus@hfpg.org)  
**visit:** [hfpg.org](http://hfpg.org)